

## Product datasheet for **TA321889**

### **RAB18 Rabbit Polyclonal Antibody**

#### **Product data:**

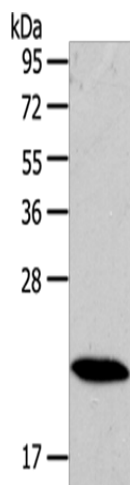
Product Type:	Primary Antibodies
Applications:	WB
Recommended Dilution:	WB: 200-1000 WB positive control: Human esophagus cancer tissue
Reactivity:	Human, Mouse, Rat
Host:	Rabbit
Isotype:	IgG
Clonality:	Polyclonal
Immunogen:	Synthetic peptide corresponding to a region derived from 128-141 amino acids of Human Ras-related protein Rab-18
Formulation:	PBS pH7.3, 0.05% NaN <sub>3</sub> , 50% glycerol
Concentration:	lot specific
Purification:	Antigen affinity purification
Conjugation:	Unconjugated
Storage:	Store at -20°C as received.
Stability:	Stable for 12 months from date of receipt.
Predicted Protein Size:	26 kDa
Gene Name:	RAB18, member RAS oncogene family
Database Link:	<a href="#">NP_067075</a> <a href="#">Entrez Gene 19330 Mouse</a> <a href="#">Entrez Gene 307039 Rat</a> <a href="#">Entrez Gene 22931 Human</a> <a href="#">Q9NP72</a>
Background:	The protein encoded by this gene is a member of a family of Ras-related small GTPases that regulate membrane trafficking in organelles and transport vesicles. Knockdown studies in zebrafish suggest that this protein may have a role in eye and brain development. Mutations in this gene are associated with Warburg micro syndrome type 3. Alternatively spliced transcript variants have been found for this gene.
Synonyms:	RAB18LI1; WARBM3



[View online »](#)

Protein Families: Druggable Genome

### Product images:



Gel: 10%SDS-PAGE

Lysate: 40  $\mu$ g

Lane: Human esophagus cancer tissue

Primary antibody: TA321889 (RAB18 Antibody) at dilution 1/100

Secondary antibody: Goat anti rabbit IgG at 1/8000 dilution

Exposure time: 5 minutes