

Product datasheet for **TA321888**

TRAF2 Rabbit Polyclonal Antibody

Product data:

Product Type:	Primary Antibodies
Applications:	IHC, WB
Recommended Dilution:	WB: 200-1000 WB positive control: Human normal liver tissue IHC: 25-100 Positive control: Human lung cancer Predicted cell location: Cytoplasm
Reactivity:	Human, Mouse
Host:	Rabbit
Isotype:	IgG
Clonality:	Polyclonal
Immunogen:	Fusion protein corresponding to a region derived from 351-496 amino acids of human TNF receptor-associated factor 2
Formulation:	PBS pH7.3, 0.05% NaN ₃ , 50% glycerol
Concentration:	lot specific
Purification:	Antigen affinity purification
Conjugation:	Unconjugated
Storage:	Store at -20°C as received.
Stability:	Stable for 12 months from date of receipt.
Gene Name:	TNF receptor associated factor 2
Database Link:	NP_066961 Entrez Gene 22030 Mouse Entrez Gene 7186 Human Q12933



[View online »](#)

Background:

The protein encoded by this gene is a member of the TNF receptor associated factor (TRAF) protein family. TRAF proteins associate with; and mediate the signal transduction from members of the TNF receptor superfamily. This protein directly interacts with TNF receptors; and forms a heterodimeric complex with TRAF1. This protein is required for TNF-alpha-mediated activation of MAPK8/JNK and NF-kappaB. The protein complex formed by this protein and TRAF1 interacts with the inhibitor-of-apoptosis proteins (IAPs); and functions as a mediator of the anti-apoptotic signals from TNF receptors. The interaction of this protein with TRADD; a TNF receptor associated apoptotic signal transducer; ensures the recruitment of IAPs for the direct inhibition of caspase activation. BIRC2/c-IAP1; an apoptosis inhibitor possessing ubiquitin ligase activity; can ubiquitinate and induce the degradation of this protein; and thus potentiate TNF-induced apoptosis. Multiple alternatively spliced transcript variants have been found for this gene; but the biological validity of only one transcript has been determined.

Synonyms:

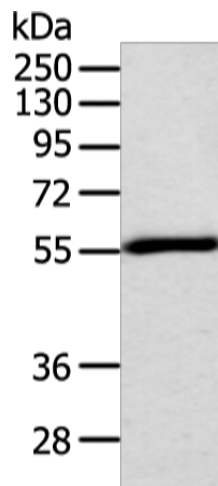
MGC:45012; TRAP; TRAP3

Protein Families:

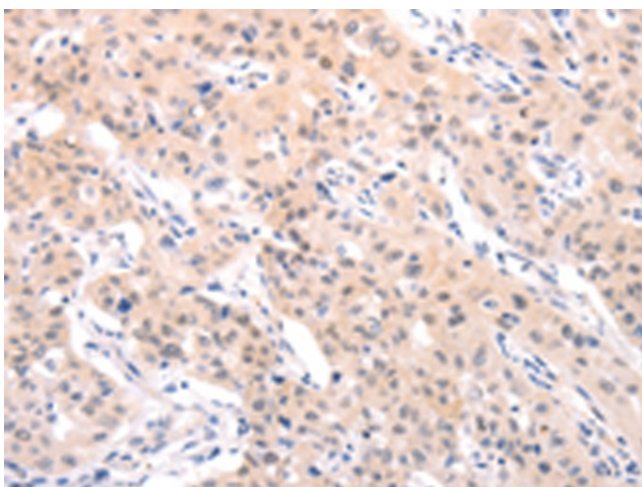
Druggable Genome

Protein Pathways:

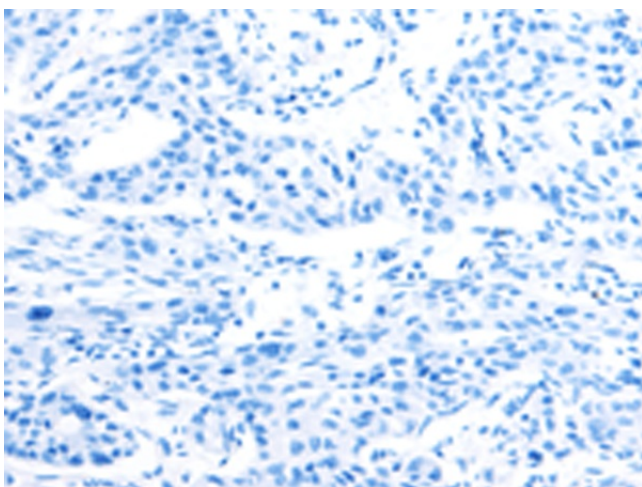
Adipocytokine signaling pathway, Apoptosis, MAPK signaling pathway, Pathways in cancer, RIG-I-like receptor signaling pathway, Small cell lung cancer

Product images:

Gel: 8%SDS-PAGE
Lysate: 40 µg
Lane: Human normal liver tissue
Primary antibody: TA321888 (TRAF2 Antibody) at dilution 1/200
Secondary antibody: Goat anti rabbit IgG at 1/8000 dilution
Exposure time: 2 minutes



Immunohistochemistry of paraffin-embedded Human lung cancer tissue using TA321888 (TRAF2 Antibody) at dilution 1/40 (Original magnification: $\times 200$)



Immunohistochemistry of paraffin-embedded Human lung cancer tissue using TA321888 (TRAF2 Antibody) at dilution 1/40, treated with fusion protein. (Original magnification: $\times 200$)