

Product datasheet for **TA321886**

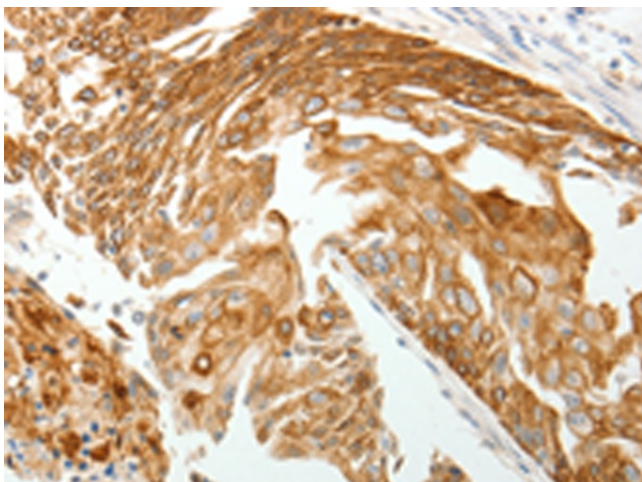
Thymosin beta 10 (TMSB10) Rabbit Polyclonal Antibody

Product data:

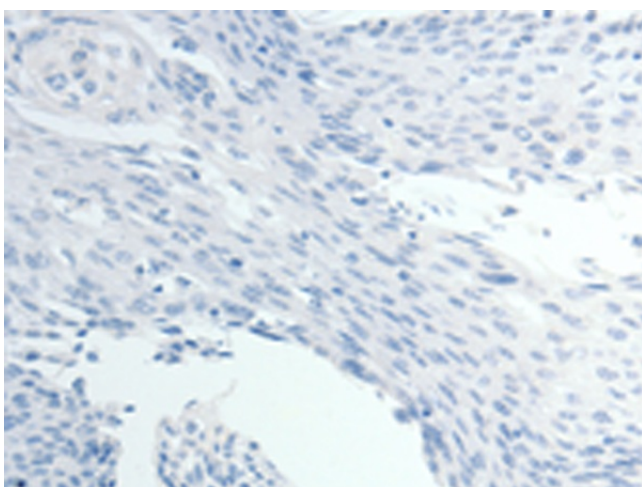
Product Type:	Primary Antibodies
Applications:	IHC
Recommended Dilution:	IHC: 25-100 Positive control: Human cervical cancer Predicted cell location: Cytoplasm
Reactivity:	Human, Mouse, Rat
Host:	Rabbit
Isotype:	IgG
Clonality:	Polyclonal
Immunogen:	Synthetic peptide corresponding to a region derived from 30-44 amino acids of human thymosin beta 10
Formulation:	PBS pH7.3, 0.05% NaN ₃ , 50% glycerol
Concentration:	lot specific
Purification:	Antigen affinity purification
Conjugation:	Unconjugated
Storage:	Store at -20°C as received.
Stability:	Stable for 12 months from date of receipt.
Gene Name:	thymosin beta 10
Database Link:	NP_066926 Entrez Gene 19240 Mouse Entrez Gene 50665 Rat Entrez Gene 9168 Human P63313
Background:	This protein plays an important role in the organization of the cytoskeleton. It binds to and sequesters actin monomers (G actin) and therefore inhibits actin polymerization. Experiment indicate that the expression decrease dramatically after birth;it expresses high levels in human fetal brain.
Synonyms:	MIG12; TB10



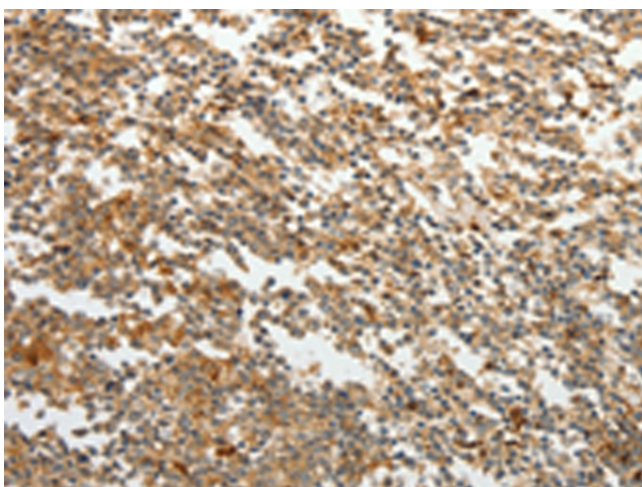
[View online »](#)

Product images:

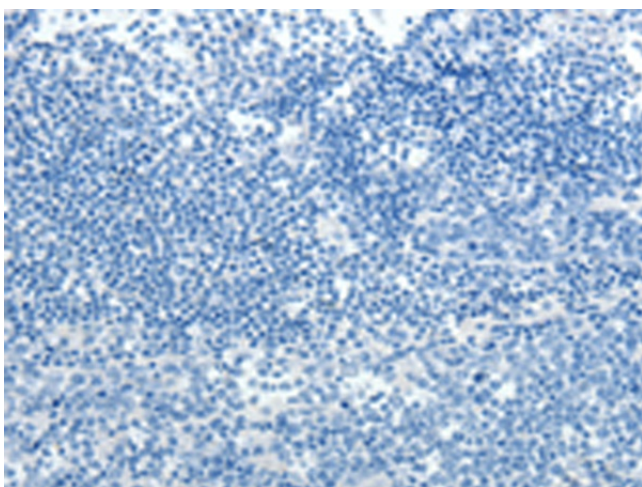
Immunohistochemistry of paraffin-embedded Human cervical cancer tissue using TA321886 (TMSB10 Antibody) at dilution 1/15 (Original magnification: $\times 200$)



Immunohistochemistry of paraffin-embedded Human cervical cancer tissue using TA321886 (TMSB10 Antibody) at dilution 1/15, treated with synthetic peptide. (Original magnification: $\times 200$)



Immunohistochemistry of paraffin-embedded Human tonsil tissue using TA321886 (TMSB10 Antibody) at dilution 1/15 (Original magnification: ×200)



Immunohistochemistry of paraffin-embedded Human tonsil tissue using TA321886 (TMSB10 Antibody) at dilution 1/15, treated with synthetic peptide. (Original magnification: ×200)