

## Product datasheet for **TA321885S**

### Claudin 1 (CLDN1) Rabbit Polyclonal Antibody

#### Product data:

Product Type:	Primary Antibodies
Applications:	IHC, WB
Recommended Dilution:	WB: 2000-5000 WB positive control: Hela cells IHC: 100-300 Positive control: Human liver cancer Predicted cell location: Cytoplasm
Reactivity:	Human, Mouse, Rat
Host:	Rabbit
Isotype:	IgG
Clonality:	Polyclonal
Immunogen:	Synthetic peptide corresponding to a region derived from 196-209 amino acids of Human claudin 1
Formulation:	PBS pH7.3, 0.05% NaN <sub>3</sub> , 50% glycerol
Purification:	Antigen affinity purification
Conjugation:	Unconjugated
Storage:	Store at -20°C as received.
Stability:	Stable for 12 months from date of receipt.
Predicted Protein Size:	23 kDa
Gene Name:	claudin 1
Database Link:	<a href="#">NP_066924</a> <a href="#">Entrez Gene 12737 Mouse</a> <a href="#">Entrez Gene 65129 Rat</a> <a href="#">Entrez Gene 9076 Human</a> <a href="#">O95832</a>



[View online »](#)

**Background:**

Tight junctions represent one mode of cell-to-cell adhesion in epithelial or endothelial cell sheets; forming continuous seals around cells and serving as a physical barrier to prevent solutes and water from passing freely through the paracellular space. These junctions are comprised of sets of continuous networking strands in the outwardly facing cytoplasmic leaflet; with complementary grooves in the inwardly facing extracytoplasmic leaflet. The protein encoded by this gene; a member of the claudin family; is an integral membrane protein and a component of tight junction strands. Loss of function mutations result in neonatal ichthyosis-sclerosing cholangitis syndrome.

**Synonyms:**

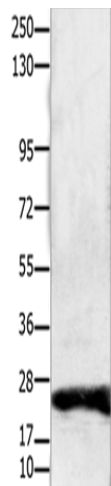
CLD1; ILVASC; SEMP1

**Protein Families:**

Transmembrane

**Protein Pathways:**

Cell adhesion molecules (CAMs), Leukocyte transendothelial migration, Pathogenic Escherichia coli infection, Tight junction

**Product images:**

Gel: 10%SDS-PAGE

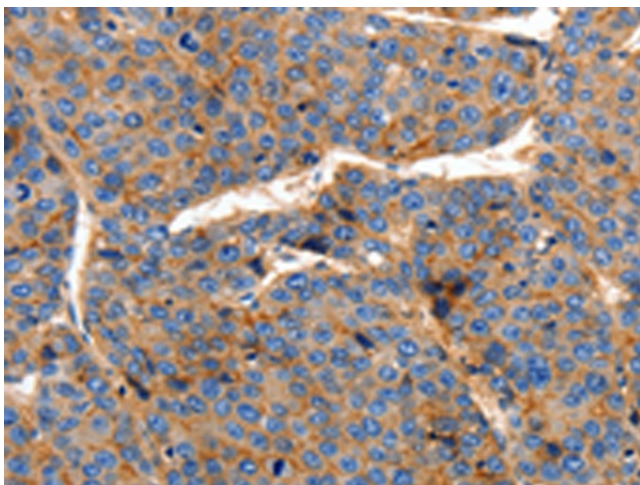
Lysate: 30 µg

Lane: HeLa cells

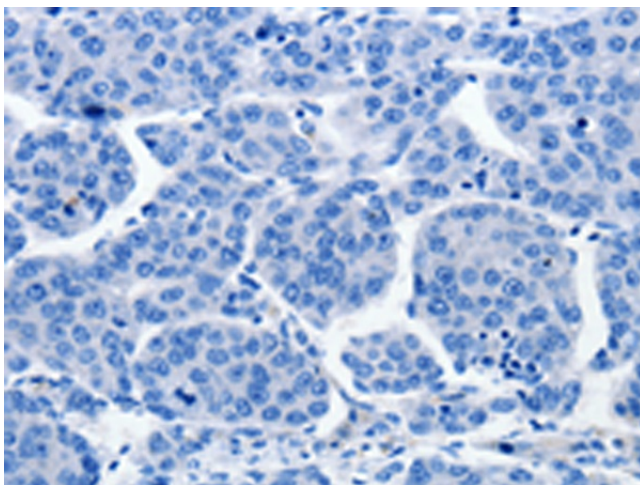
Primary antibody: [TA321885] (CLDN1 Antibody)  
at dilution 1/1900

Secondary antibody: Goat anti rabbit IgG at  
1/8000 dilution

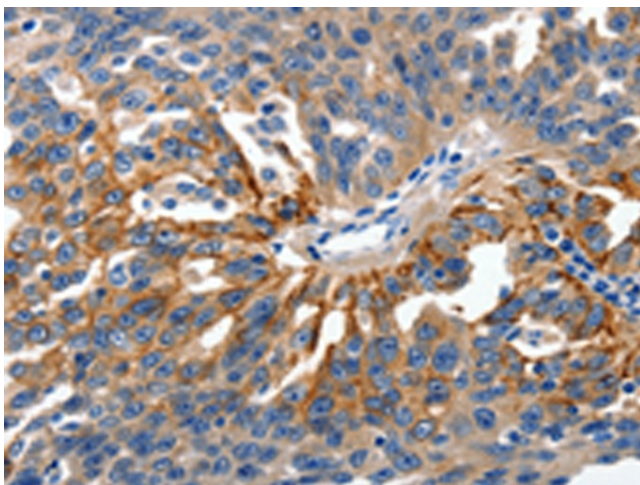
Exposure time: 20 seconds



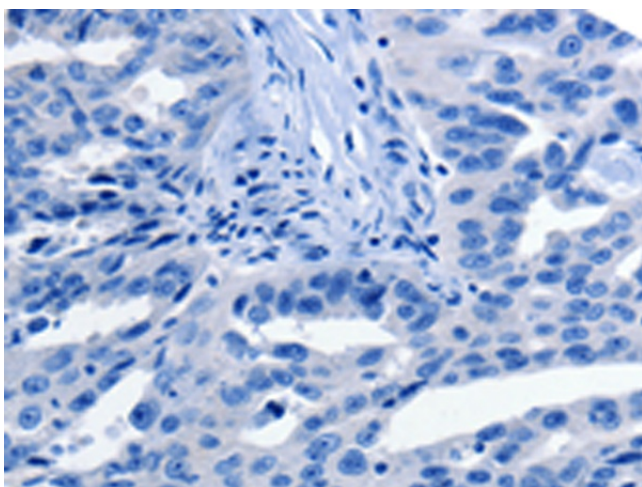
Immunohistochemistry of paraffin-embedded Human liver cancer tissue using [TA321885] (CLDN1 Antibody) at dilution 1/150 (Original magnification:  $\times 200$ )



Immunohistochemistry of paraffin-embedded Human liver cancer tissue using [TA321885] (CLDN1 Antibody) at dilution 1/150, treated with synthetic peptide. (Original magnification:  $\times 200$ )



Immunohistochemistry of paraffin-embedded Human ovarian cancer tissue using [TA321885] (CLDN1 Antibody) at dilution 1/150 (Original magnification:  $\times 200$ )



Immunohistochemistry of paraffin-embedded Human ovarian cancer tissue using [TA321885] (CLDN1 Antibody) at dilution 1/150, treated with synthetic peptide. (Original magnification:  $\times 200$ )