

Product datasheet for **TA321882S**

RAB22A Rabbit Polyclonal Antibody

Product data:

| | |
|-------------------------|---|
| Product Type: | Primary Antibodies |
| Applications: | IHC, WB |
| Recommended Dilution: | WB: 200-1000 WB positive control: Mouse heart tissue IHC: 50-200 Positive control: Human esophagus cancer Predicted cell location: Cell membrane, Cytoplasm |
| Reactivity: | Human, Mouse |
| Host: | Rabbit |
| Isotype: | IgG |
| Clonality: | Polyclonal |
| Immunogen: | Synthetic peptide corresponding to a region derived from 128-140 amino acids of Human Ras-related protein Rab-22A |
| Formulation: | PBS pH7.3, 0.05% NaN ₃ , 50% glycerol |
| Purification: | Antigen affinity purification |
| Conjugation: | Unconjugated |
| Storage: | Store at -20°C as received. |
| Stability: | Stable for 12 months from date of receipt. |
| Predicted Protein Size: | 22 kDa |
| Gene Name: | RAB22A, member RAS oncogene family |
| Database Link: | NP_065724 Entrez Gene 19334 Mouse Entrez Gene 57403 Human Q9UL26 |
| Background: | The protein encoded by this gene is a member of the RAB family of small GTPases. The GTP-bound form of the encoded protein has been shown to interact with early-endosomal antigen 1, and may be involved in the trafficking of and interaction between endosomal compartments. |
| Synonyms: | MGC16770 |

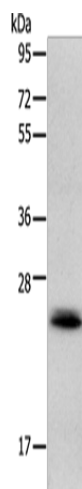


[View online »](#)

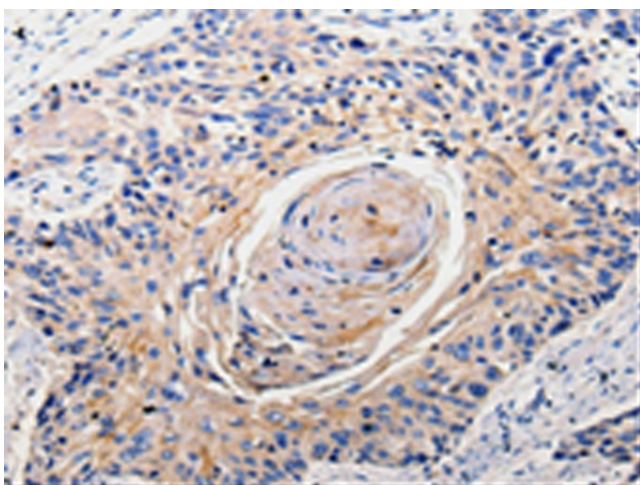
Protein Families: Druggable Genome

Protein Pathways: Endocytosis

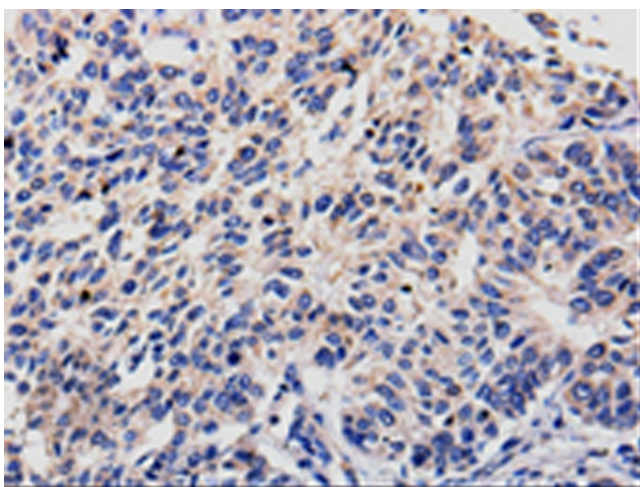
Product images:



Gel: 12%SDS-PAGE
Lysate: 40 μ g
Lane: Mouse heart tissue
Primary antibody: [TA321882] (RAB22A Antibody) at dilution 1/300
Secondary antibody: Goat anti rabbit IgG at 1/8000 dilution
Exposure time: 10 seconds



Immunohistochemistry of paraffin-embedded Human esophagus cancer tissue using [TA321882] (RAB22A Antibody) at dilution 1/100. (Original magnification: \times 200)



Immunohistochemistry of paraffin-embedded Human lung cancer tissue using [TA321882] (RAB22A Antibody) at dilution 1/100. (Original magnification: $\times 200$)