

## Product datasheet for **TA321882**

### **RAB22A Rabbit Polyclonal Antibody**

#### **Product data:**

<b>Product Type:</b>	Primary Antibodies
<b>Applications:</b>	IHC, WB
<b>Recommended Dilution:</b>	WB: 200-1000 WB positive control: Mouse heart tissue IHC: 50-200 Positive control: Human esophagus cancer Predicted cell location: Cell membrane, Cytoplasm
<b>Reactivity:</b>	Human, Mouse
<b>Host:</b>	Rabbit
<b>Isotype:</b>	IgG
<b>Clonality:</b>	Polyclonal
<b>Immunogen:</b>	Synthetic peptide corresponding to a region derived from 128-140 amino acids of Human Ras-related protein Rab-22A
<b>Formulation:</b>	PBS pH7.3, 0.05% NaN <sub>3</sub> , 50% glycerol
<b>Concentration:</b>	lot specific
<b>Purification:</b>	Antigen affinity purification
<b>Conjugation:</b>	Unconjugated
<b>Storage:</b>	Store at -20°C as received.
<b>Stability:</b>	Stable for 12 months from date of receipt.
<b>Predicted Protein Size:</b>	22 kDa
<b>Gene Name:</b>	RAB22A, member RAS oncogene family
<b>Database Link:</b>	<a href="#">NP_065724</a> <a href="#">Entrez Gene 19334 Mouse</a> <a href="#">Entrez Gene 57403 Human</a> <a href="#">Q9UL26</a>
<b>Background:</b>	The protein encoded by this gene is a member of the RAB family of small GTPases. The GTP-bound form of the encoded protein has been shown to interact with early-endosomal antigen 1, and may be involved in the trafficking of and interaction between endosomal compartments.



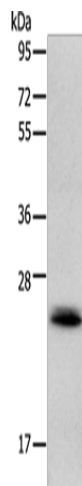
[View online »](#)

Synonyms: MGC16770

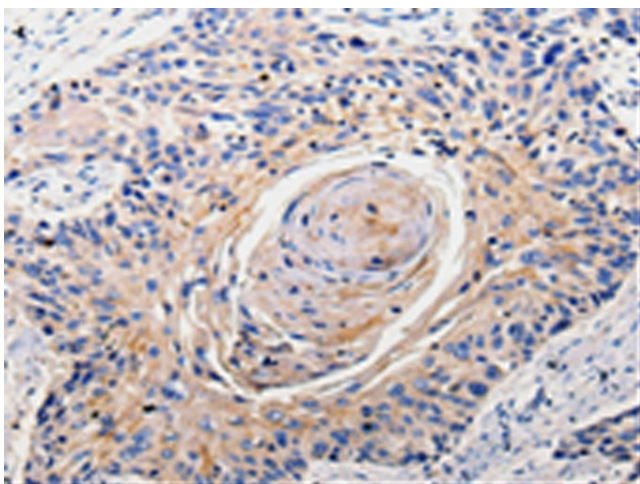
Protein Families: Druggable Genome

Protein Pathways: Endocytosis

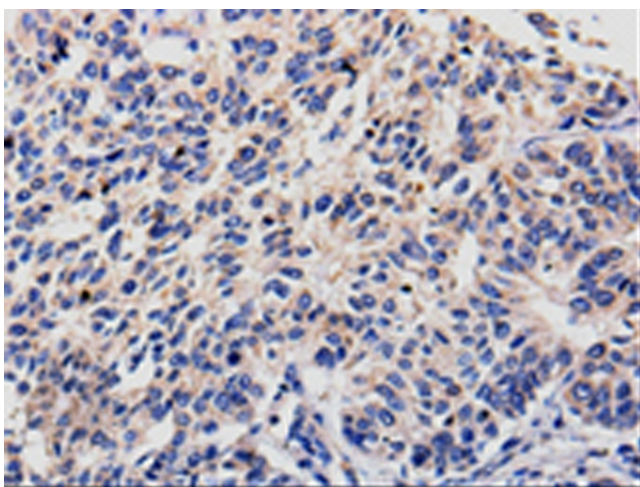
### Product images:



Gel: 12%SDS-PAGE  
Lysate: 40  $\mu$ g  
Lane: Mouse heart tissue  
Primary antibody: TA321882 (RAB22A Antibody)  
at dilution 1/300  
Secondary antibody: Goat anti rabbit IgG at  
1/8000 dilution  
Exposure time: 10 seconds



Immunohistochemistry of paraffin-embedded  
Human esophagus cancer tissue using TA321882  
(RAB22A Antibody) at dilution 1/100. (Original  
magnification:  $\times$ 200)



Immunohistochemistry of paraffin-embedded Human lung cancer tissue using TA321882 (RAB22A Antibody) at dilution 1/100. (Original magnification: ×200)