

## Product datasheet for **TA321879S**

### CaMKI gamma (CAMK1G) Rabbit Polyclonal Antibody

#### Product data:

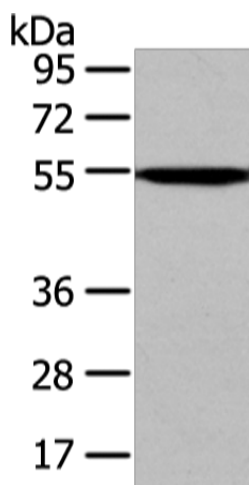
Product Type:	Primary Antibodies
Applications:	IHC, WB
Recommended Dilution:	WB: 500-2000 WB positive control: Mouse liver tissue IHC: 25-100 Positive control: Human liver cancer Predicted cell location: Cytoplasm
Reactivity:	Human, Mouse, Rat
Host:	Rabbit
Isotype:	IgG
Clonality:	Polyclonal
Immunogen:	Fusion protein corresponding to a region derived from 23-277 amino acids of human calcium/calmodulin-dependent protein kinase IG
Formulation:	PBS pH7.3, 0.05% NaN <sub>3</sub> , 50% glycerol
Purification:	Antigen affinity purification
Conjugation:	Unconjugated
Storage:	Store at -20°C as received.
Stability:	Stable for 12 months from date of receipt.
Predicted Protein Size:	53 kDa
Gene Name:	calcium/calmodulin dependent protein kinase IG
Database Link:	<a href="#">NP_065172</a> <a href="#">Entrez Gene 171358 Rat</a> <a href="#">Entrez Gene 215303 Mouse</a> <a href="#">Entrez Gene 57172 Human</a> <a href="#">Q96NX5</a>
Background:	This gene encodes a protein similar to calcium/calmodulin dependent protein kinase; however; its exact function is not known. Calcium/calmodulin-dependent protein kinase belonging to a proposed calcium-triggered signaling cascade. In vitro phosphorylates transcription factor CREB1.
Synonyms:	CLICK3; CLICKIII; dj272L16.1; VWS1



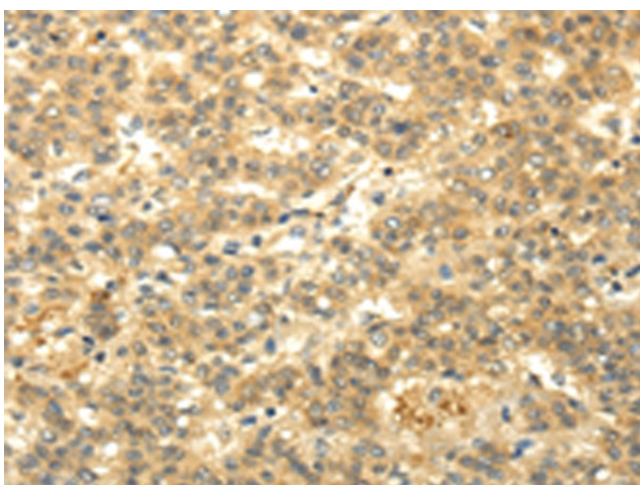
[View online »](#)

Protein Families: Druggable Genome, Protein Kinase

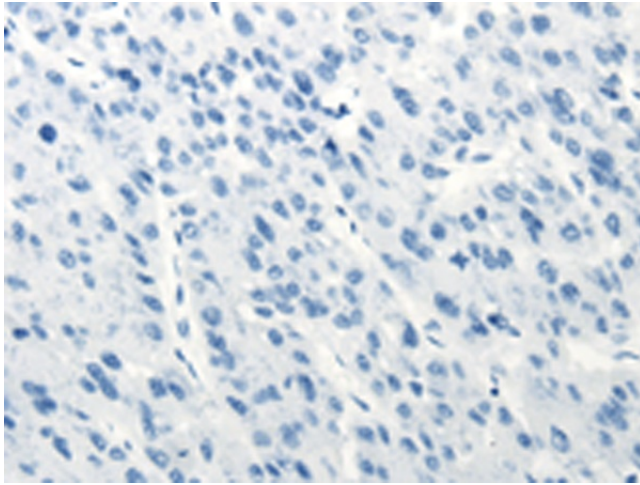
### Product images:



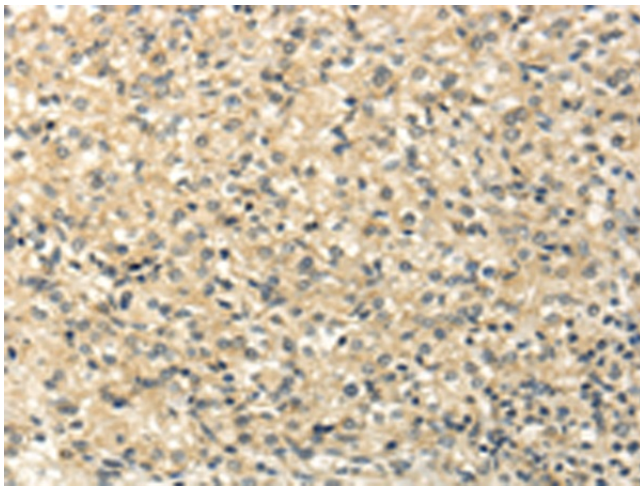
Gel: 8%SDS-PAGE  
Lysate: 40  $\mu$ g  
Lane: Mouse liver tissue  
Primary antibody: [TA321879] (CAMK1G Antibody) at dilution 1/250  
Secondary antibody: Goat anti rabbit IgG at 1/8000 dilution  
Exposure time: 1MIN



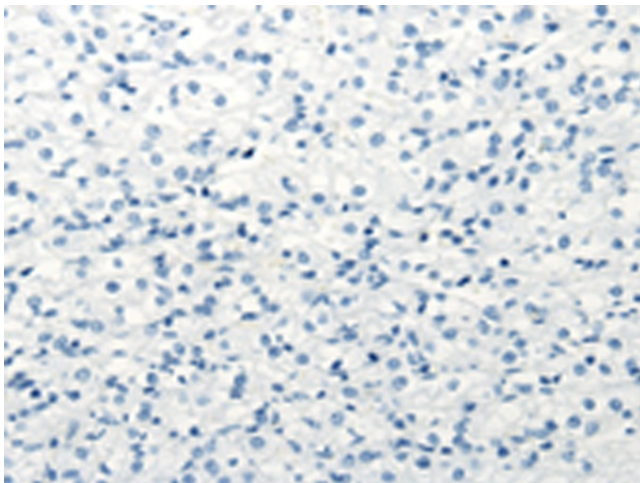
Immunohistochemistry of paraffin-embedded Human liver cancer tissue using [TA321879] (CAMK1G Antibody) at dilution 1/20 (Original magnification:  $\times$ 200)



Immunohistochemistry of paraffin-embedded Human liver cancer tissue using [TA321879] (CAMK1G Antibody) at dilution 1/20, treated with fusion protein. (Original magnification:  $\times 200$ )



Immunohistochemistry of paraffin-embedded Human prostate cancer tissue using [TA321879] (CAMK1G Antibody) at dilution 1/20 (Original magnification:  $\times 200$ )



Immunohistochemistry of paraffin-embedded Human prostate cancer tissue using [TA321879] (CAMK1G Antibody) at dilution 1/20, treated with fusion protein. (Original magnification:  $\times 200$ )