

Product datasheet for **TA321879**

CaMKI gamma (CAMK1G) Rabbit Polyclonal Antibody

Product data:

Product Type:	Primary Antibodies
Applications:	IHC, WB
Recommended Dilution:	WB: 500-2000 WB positive control: Mouse liver tissue IHC: 25-100 Positive control: Human liver cancer Predicted cell location: Cytoplasm
Reactivity:	Human, Mouse, Rat
Host:	Rabbit
Isotype:	IgG
Clonality:	Polyclonal
Immunogen:	Fusion protein corresponding to a region derived from 23-277 amino acids of human calcium/calmodulin-dependent protein kinase IG
Formulation:	PBS pH7.3, 0.05% NaN ₃ , 50% glycerol
Concentration:	lot specific
Purification:	Antigen affinity purification
Conjugation:	Unconjugated
Storage:	Store at -20°C as received.
Stability:	Stable for 12 months from date of receipt.
Predicted Protein Size:	53 kDa
Gene Name:	calcium/calmodulin dependent protein kinase IG
Database Link:	NP_065172 Entrez Gene 171358 Rat Entrez Gene 215303 Mouse Entrez Gene 57172 Human Q96NX5
Background:	This gene encodes a protein similar to calcium/calmodulin dependent protein kinase; however; its exact function is not known. Calcium/calmodulin-dependent protein kinase belonging to a proposed calcium-triggered signaling cascade. In vitro phosphorylates transcription factor CREB1.

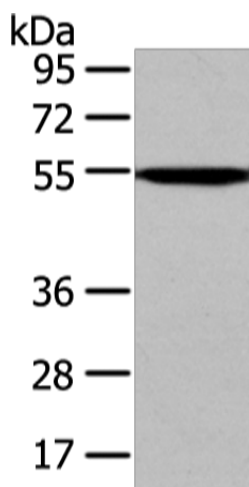


[View online »](#)

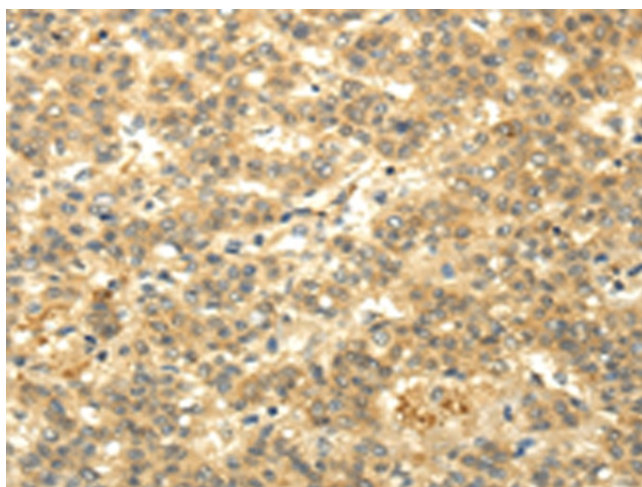
Synonyms: CLICK3; CLICKIII; dj272L16.1; VWS1

Protein Families: Druggable Genome, Protein Kinase

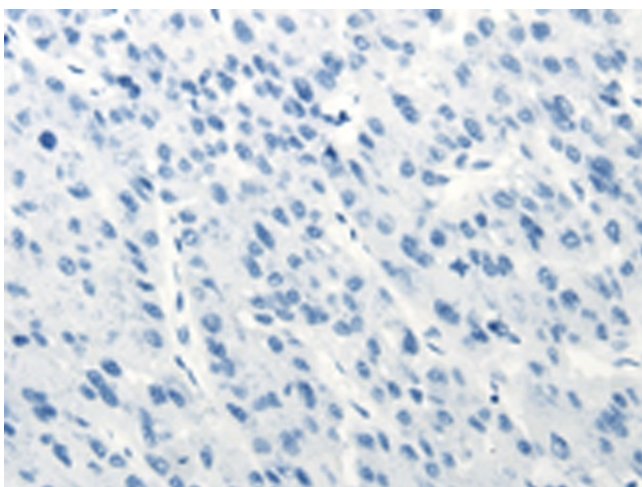
Product images:



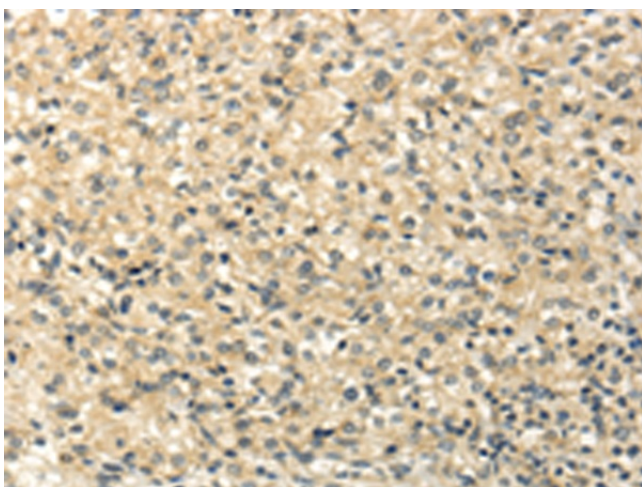
Gel: 8%SDS-PAGE
Lysate: 40 µg
Lane: Mouse liver tissue
Primary antibody: TA321879 (CAMK1G Antibody)
at dilution 1/250
Secondary antibody: Goat anti rabbit IgG at
1/8000 dilution
Exposure time: 1MIN



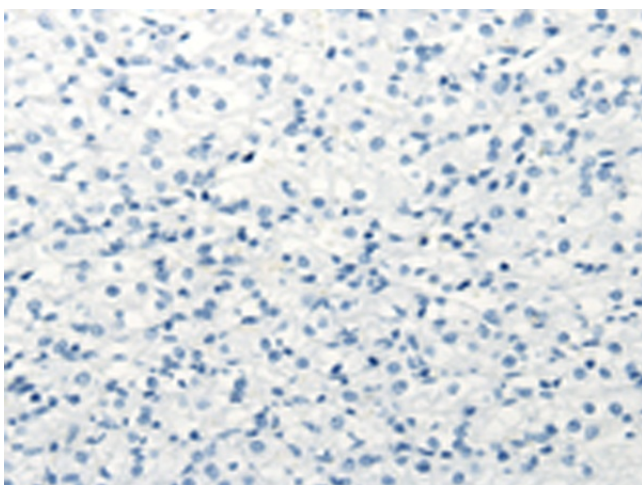
Immunohistochemistry of paraffin-embedded
Human liver cancer tissue using TA321879
(CAMK1G Antibody) at dilution 1/20 (Original
magnification: ×200)



Immunohistochemistry of paraffin-embedded Human liver cancer tissue using TA321879 (CAMK1G Antibody) at dilution 1/20, treated with fusion protein. (Original magnification: x200)



Immunohistochemistry of paraffin-embedded Human prostate cancer tissue using TA321879 (CAMK1G Antibody) at dilution 1/20 (Original magnification: x200)



Immunohistochemistry of paraffin-embedded Human prostate cancer tissue using TA321879 (CAMK1G Antibody) at dilution 1/20, treated with fusion protein. (Original magnification: x200)