

Product datasheet for **TA321878**

CHRNA10 Rabbit Polyclonal Antibody

Product data:

Product Type:	Primary Antibodies
Applications:	IHC
Recommended Dilution:	IHC: 50-100 Positive control: Human cervical cancer Predicted cell location: Cell membrane
Reactivity:	Human
Host:	Rabbit
Isotype:	IgG
Clonality:	Polyclonal
Immunogen:	Synthetic peptide corresponding to a region derived from 360-373 amino acids of human cholinergic receptor, nicotinic, alpha 10 (neuronal)
Formulation:	PBS pH7.3, 0.05% NaN ₃ , 50% glycerol
Concentration:	lot specific
Purification:	Antigen affinity purification
Conjugation:	Unconjugated
Storage:	Store at -20°C as received.
Stability:	Stable for 12 months from date of receipt.
Gene Name:	cholinergic receptor nicotinic alpha 10 subunit
Database Link:	NP_065135 Entrez Gene 57053 Human Q9GZZ6
Background:	Ionotropic receptor with a probable role in the modulation of auditory stimuli. Agonist binding may induce an extensive change in conformation that affects all subunits and leads to opening of an ion-conducting channel across the plasma membrane. The channel is permeable to a range of divalent cations including calcium; the influx of which may activate a potassium current which hyperpolarizes the cell membrane. In the ear; this may lead to a reduction in basilar membrane motion; altering the activity of auditory nerve fibers and reducing the range of dynamic hearing. This may protect against acoustic trauma.

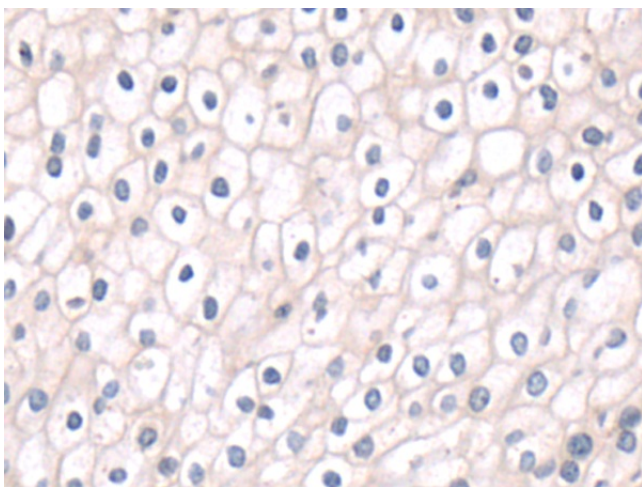


[View online »](#)

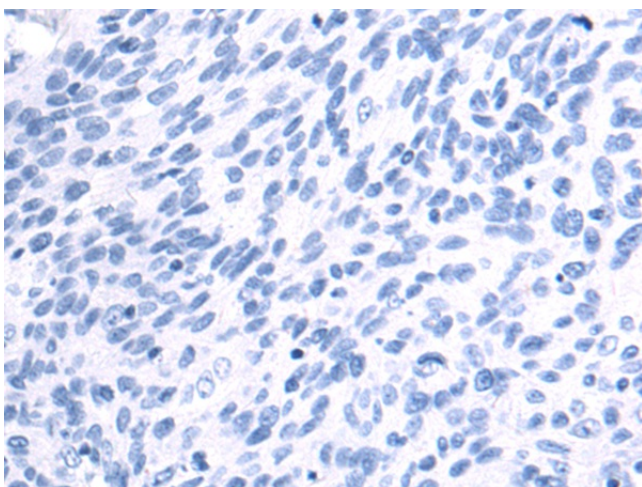
Synonyms: alpha 10; alpha polypeptide 10; cholinergic receptor; nicotinic; OTTHUMP00000013620

Protein Families: Druggable Genome, Ion Channels: Cys-loop Receptors, Transmembrane

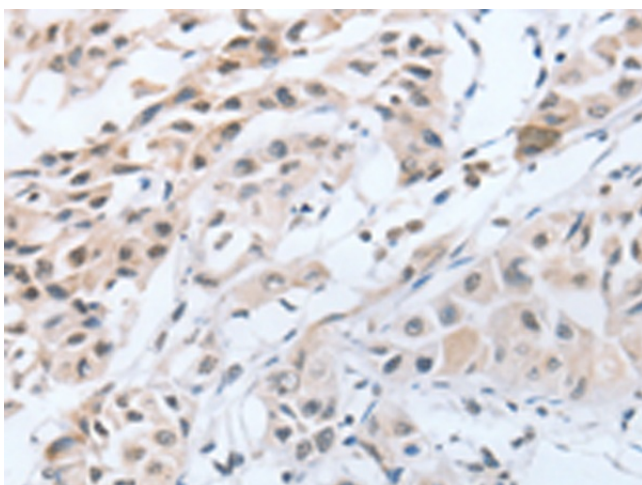
Product images:



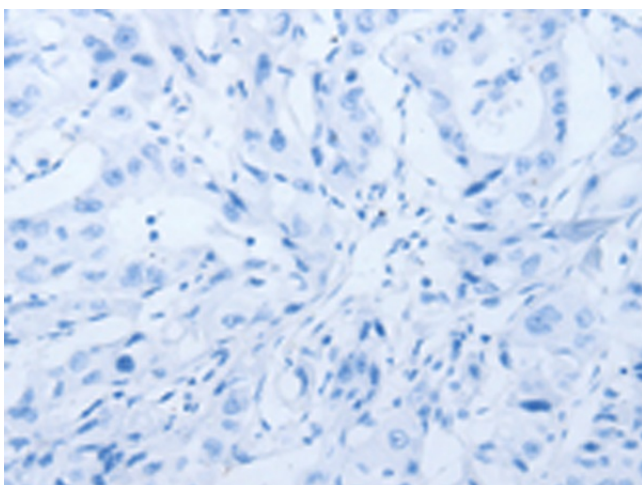
Immunohistochemistry of paraffin-embedded Human colon cancer tissue using TA321878 (CHRNA10 Antibody) at dilution 1/50 (Original magnification: $\times 200$)



Immunohistochemistry of paraffin-embedded Human colon cancer tissue using TA321878 (CHRNA10 Antibody) at dilution 1/50, treated with synthetic peptide. (Original magnification: $\times 200$)



Immunohistochemistry of paraffin-embedded Human lung cancer tissue using TA321878 (CHRNA10 Antibody) at dilution 1/50 (Original magnification: $\times 200$)



Immunohistochemistry of paraffin-embedded Human lung cancer tissue using TA321878 (CHRNA10 Antibody) at dilution 1/50, treated with synthetic peptide. (Original magnification: $\times 200$)