

Product datasheet for **TA321877**

CHRNA10 Rabbit Polyclonal Antibody

Product data:

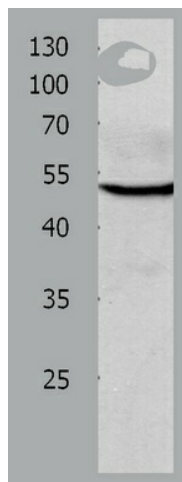
Product Type:	Primary Antibodies
Applications:	WB
Recommended Dilution:	ELISA: 1:1000-2000, WB: 1:200-1000
Reactivity:	Human, Mouse, Rat
Host:	Rabbit
Isotype:	IgG
Clonality:	Polyclonal
Immunogen:	Synthetic peptide peptide corresponding to a region derived from 360-373 amino acids of human cholinergic receptor, nicotinic, alpha 10 (neuronal)
Formulation:	PBS pH7.3, 0.05% NaN ₃ , 50% glycerol
Concentration:	lot specific
Purification:	Antigen affinity purification
Conjugation:	Unconjugated
Storage:	Store at -20°C as received.
Stability:	Stable for 12 months from date of receipt.
Predicted Protein Size:	50 kDa
Gene Name:	cholinergic receptor nicotinic alpha 10 subunit
Database Link:	NP_065135 Entrez Gene 64574 Rat Entrez Gene 504186 Mouse Entrez Gene 57053 Human Q9GZZ6
Background:	Ionotropic receptor with a probable role in the modulation of auditory stimuli. Agonist binding may induce an extensive change in conformation that affects all subunits and leads to opening of an ion-conducting channel across the plasma membrane. The channel is permeable to a range of divalent cations including calcium; the influx of which may activate a potassium current which hyperpolarizes the cell membrane. In the ear; this may lead to a reduction in basilar membrane motion; altering the activity of auditory nerve fibers and reducing the range of dynamic hearing. This may protect against acoustic trauma.
Synonyms:	alpha 10; alpha polypeptide 10; cholinergic receptor; nicotinic; OTTHUMP00000013620



[View online »](#)

Protein Families: Druggable Genome, Ion Channels: Cys-loop Receptors, Transmembrane

Product images:



Predicted band size: 50 kDa. Positive control:
A549 cell lysate. Recommended dilution: 1/200-
1000