

## Product datasheet for **TA321875S**

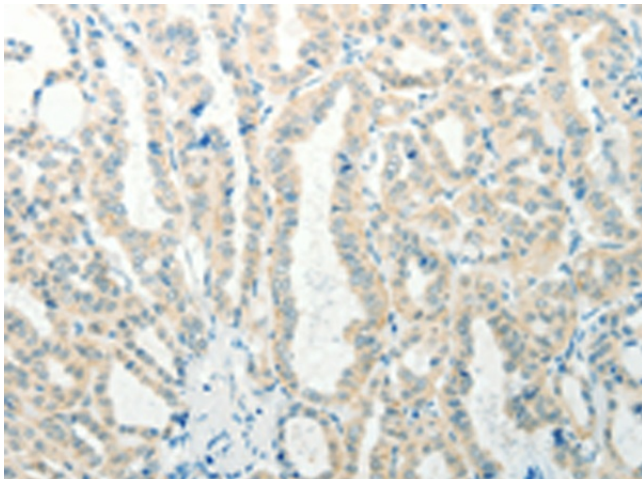
### **RAB25 Rabbit Polyclonal Antibody**

#### **Product data:**

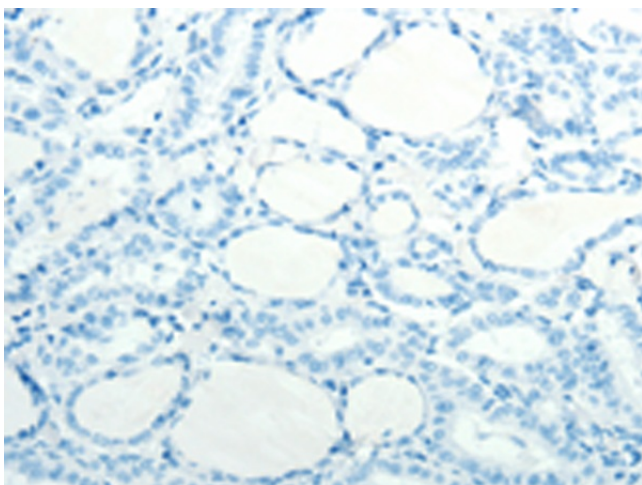
<b>Product Type:</b>	Primary Antibodies
<b>Applications:</b>	IHC
<b>Recommended Dilution:</b>	IHC: 25-100 Positive control: Human thyroid cancer Predicted cell location: Cytoplasm
<b>Reactivity:</b>	Human, Mouse
<b>Host:</b>	Rabbit
<b>Isotype:</b>	IgG
<b>Clonality:</b>	Polyclonal
<b>Immunogen:</b>	Synthetic peptide corresponding to a region derived from 127-140 amino acids of Human Ras-related protein Rab-25
<b>Formulation:</b>	PBS pH7.3, 0.05% NaN <sub>3</sub> , 50% glycerol
<b>Purification:</b>	Antigen affinity purification
<b>Conjugation:</b>	Unconjugated
<b>Storage:</b>	Store at -20°C as received.
<b>Stability:</b>	Stable for 12 months from date of receipt.
<b>Gene Name:</b>	RAB25, member RAS oncogene family
<b>Database Link:</b>	<a href="#">NP_065120</a> <a href="#">Entrez Gene 53868 Mouse</a> <a href="#">Entrez Gene 57111 Human</a> <a href="#">P57735</a>
<b>Background:</b>	RAB proteins; such as RAB25; are members of the RAS superfamily of small GTPases that are involved in membrane trafficking. Members of the RAB11 subfamily; including RAB25; control the return of internalized membrane-associated moieties to the cell surface.
<b>Synonyms:</b>	CATX-8; RAB11C
<b>Protein Families:</b>	Druggable Genome, Transcription Factors



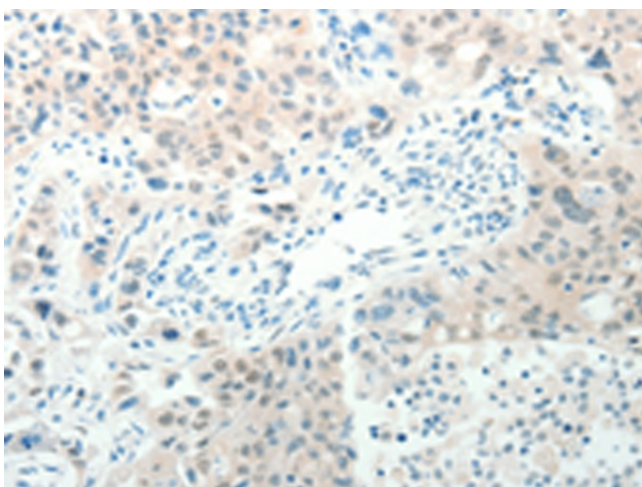
[View online »](#)

**Product images:**

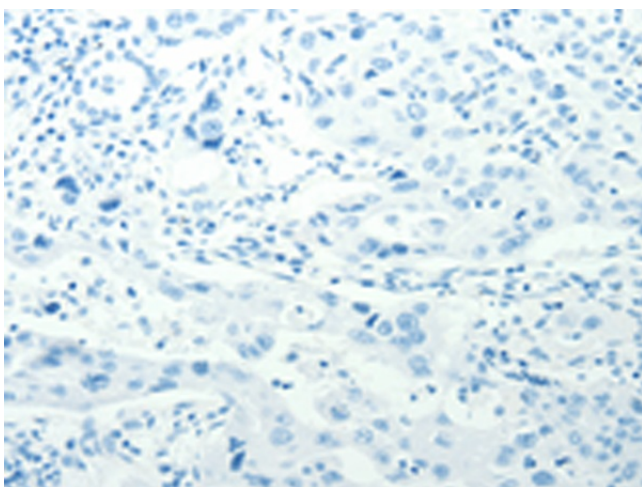
Immunohistochemistry of paraffin-embedded Human thyroid cancer tissue using [TA321875] (RAB25 Antibody) at dilution 1/50 (Original magnification:  $\times 200$ )



Immunohistochemistry of paraffin-embedded Human thyroid cancer tissue using [TA321875] (RAB25 Antibody) at dilution 1/50, treated with synthetic peptide. (Original magnification:  $\times 200$ )



Immunohistochemistry of paraffin-embedded Human lung cancer tissue using [TA321875] (RAB25 Antibody) at dilution 1/50 (Original magnification:  $\times 200$ )



Immunohistochemistry of paraffin-embedded Human lung cancer tissue using [TA321875] (RAB25 Antibody) at dilution 1/50, treated with synthetic peptide. (Original magnification:  $\times 200$ )