

## Product datasheet for **TA321875**

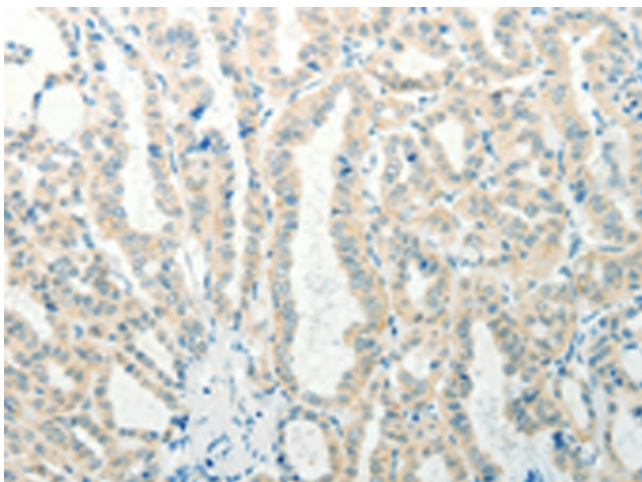
### RAB25 Rabbit Polyclonal Antibody

#### Product data:

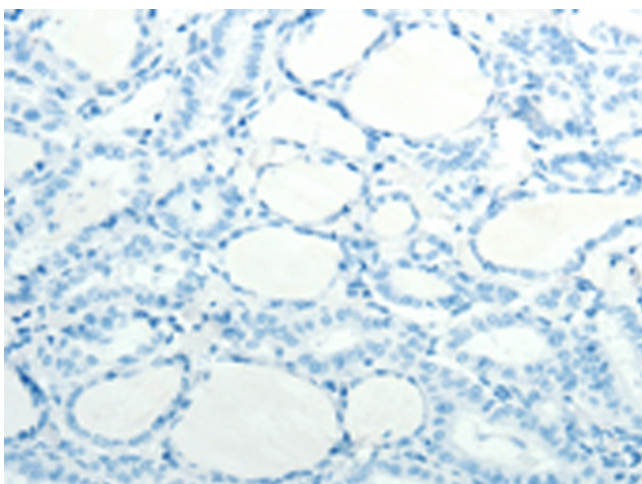
Product Type:	Primary Antibodies
Applications:	IHC
Recommended Dilution:	IHC: 25-100 Positive control: Human thyroid cancer Predicted cell location: Cytoplasm
Reactivity:	Human, Mouse
Host:	Rabbit
Isotype:	IgG
Clonality:	Polyclonal
Immunogen:	Synthetic peptide corresponding to a region derived from 127-140 amino acids of Human Ras-related protein Rab-25
Formulation:	PBS pH7.3, 0.05% NaN <sub>3</sub> , 50% glycerol
Concentration:	lot specific
Purification:	Antigen affinity purification
Conjugation:	Unconjugated
Storage:	Store at -20°C as received.
Stability:	Stable for 12 months from date of receipt.
Gene Name:	RAB25, member RAS oncogene family
Database Link:	<a href="#">NP_065120</a> <a href="#">Entrez Gene 53868 Mouse</a> <a href="#">Entrez Gene 57111 Human</a> <a href="#">P57735</a>
Background:	RAB proteins; such as RAB25; are members of the RAS superfamily of small GTPases that are involved in membrane trafficking. Members of the RAB11 subfamily; including RAB25; control the return of internalized membrane-associated moieties to the cell surface.
Synonyms:	CATX-8; RAB11C
Protein Families:	Druggable Genome, Transcription Factors



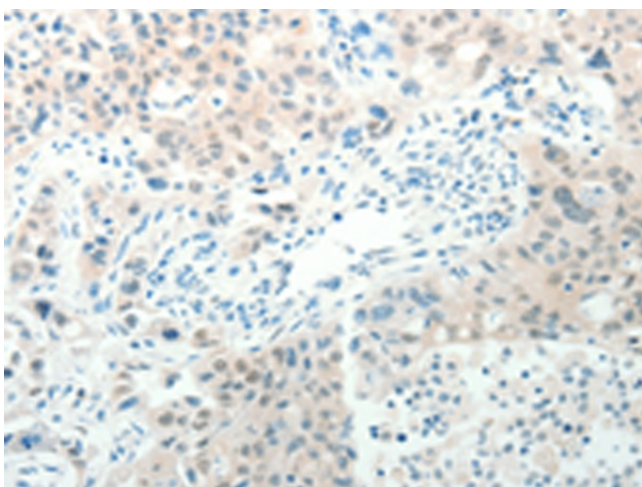
[View online »](#)

**Product images:**

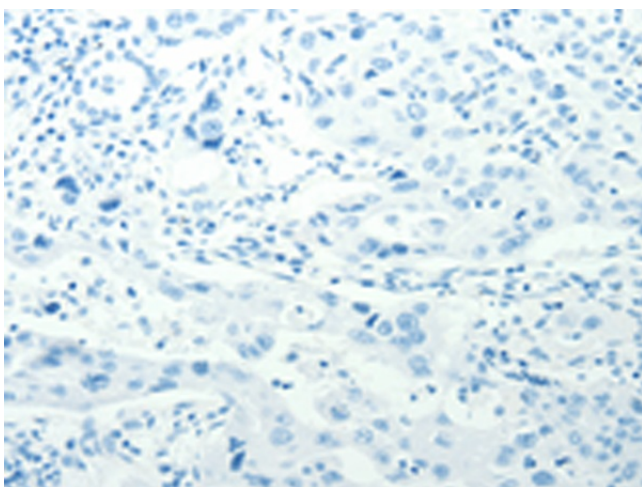
Immunohistochemistry of paraffin-embedded Human thyroid cancer tissue using TA321875 (RAB25 Antibody) at dilution 1/50 (Original magnification:  $\times 200$ )



Immunohistochemistry of paraffin-embedded Human thyroid cancer tissue using TA321875 (RAB25 Antibody) at dilution 1/50, treated with synthetic peptide. (Original magnification:  $\times 200$ )



Immunohistochemistry of paraffin-embedded Human lung cancer tissue using TA321875 (RAB25 Antibody) at dilution 1/50 (Original magnification:  $\times 200$ )



Immunohistochemistry of paraffin-embedded Human lung cancer tissue using TA321875 (RAB25 Antibody) at dilution 1/50, treated with synthetic peptide. (Original magnification:  $\times 200$ )