

## Product datasheet for **TA321874S**

### AKR1B10 Rabbit Polyclonal Antibody

#### Product data:

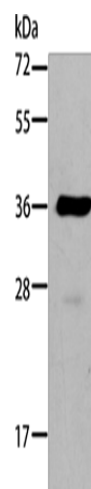
Product Type:	Primary Antibodies
Applications:	IHC, WB
Recommended Dilution:	WB: 200-1000 WB positive control: A549 cells IHC: 25-100 Positive control: Human liver cancer Predicted cell location: Cytoplasm
Reactivity:	Human
Host:	Rabbit
Isotype:	IgG
Clonality:	Polyclonal
Immunogen:	Full length fusion protein
Formulation:	PBS pH7.3, 0.05% NaN <sub>3</sub> , 50% glycerol
Purification:	Antigen affinity purification
Conjugation:	Unconjugated
Storage:	Store at -20°C as received.
Stability:	Stable for 12 months from date of receipt.
Predicted Protein Size:	36 kDa
Gene Name:	aldo-keto reductase family 1, member B10 (aldose reductase)
Database Link:	<a href="#">NP_064695</a> <a href="#">Entrez Gene 57016 Human O60218</a>
Background:	This gene encodes a member of the aldo/keto reductase superfamily, which consists of more than 40 known enzymes and proteins. This member can efficiently reduce aliphatic and aromatic aldehydes, and it is less active on hexoses. It is highly expressed in adrenal gland, small intestine, and colon, and may play an important role in liver carcinogenesis.
Synonyms:	AKR1B11; AKR1B12; ALDRLn; ARL-1; ARL1; HIS; HSI
Protein Families:	Druggable Genome



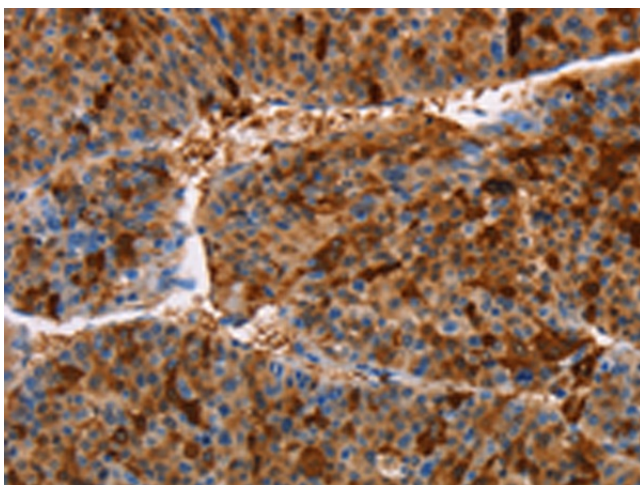
[View online »](#)

**Protein Pathways:** Butanoate metabolism, Fructose and mannose metabolism, Linoleic acid metabolism, Metabolic pathways

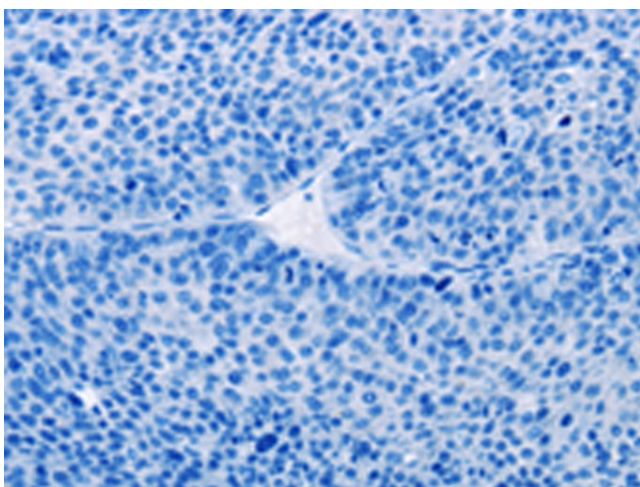
**Product images:**



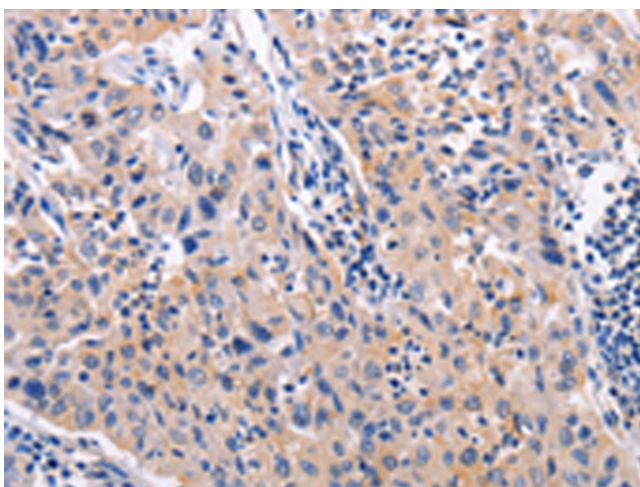
Gel: 10%SDS-PAGE  
Lysate: 40 µg  
Lane: A549 cells  
Primary antibody: [TA321874] (AKR1B10 Antibody) at dilution 1/184  
Secondary antibody: Goat anti rabbit IgG at 1/8000 dilution  
Exposure time: 5 seconds



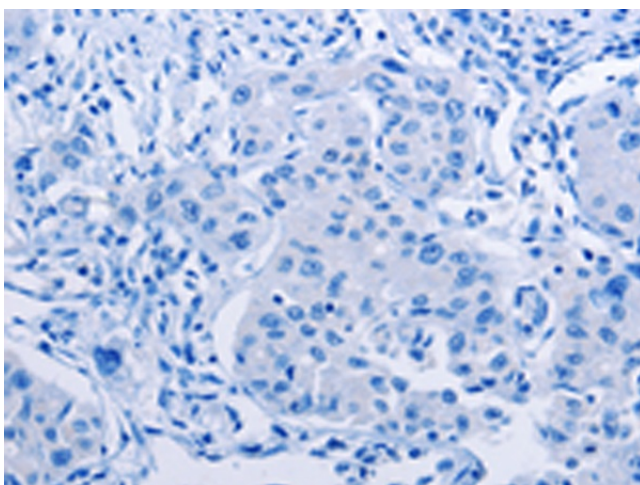
Immunohistochemistry of paraffin-embedded Human liver cancer tissue using [TA321874] (AKR1B10 Antibody) at dilution 1/30 (Original magnification: ×200)



Immunohistochemistry of paraffin-embedded Human liver cancer tissue using [TA321874] (AKR1B10 Antibody) at dilution 1/30, treated with fusion protein. (Original magnification:  $\times 200$ )



Immunohistochemistry of paraffin-embedded Human lung cancer tissue using [TA321874] (AKR1B10 Antibody) at dilution 1/30 (Original magnification:  $\times 200$ )



Immunohistochemistry of paraffin-embedded Human lung cancer tissue using [TA321874] (AKR1B10 Antibody) at dilution 1/30, treated with fusion protein. (Original magnification:  $\times 200$ )