

Product datasheet for **TA321872**

NIT2 Rabbit Polyclonal Antibody

Product data:

Product Type:	Primary Antibodies
Applications:	IHC, WB
Recommended Dilution:	WB: 1000-5000 WB positive control: Mouse liver and kidney tissue, RAW264.7 cells IHC: 50-200 Positive control: Human colon cancer Predicted cell location: Cytoplasm, Nucleus
Reactivity:	Human, Mouse
Host:	Rabbit
Isotype:	IgG
Clonality:	Polyclonal
Immunogen:	Synthetic peptide corresponding to a region derived from 264-276 amino acids of Human itrilase family, member 2
Formulation:	PBS pH7.3, 0.05% NaN ₃ , 50% glycerol
Concentration:	lot specific
Purification:	Antigen affinity purification
Conjugation:	Unconjugated
Storage:	Store at -20°C as received.
Stability:	Stable for 12 months from date of receipt.
Predicted Protein Size:	31 kDa
Gene Name:	nitrilase family member 2
Database Link:	NP_064587 Entrez Gene 52633 Mouse Entrez Gene 56954 Human Q9NQR4



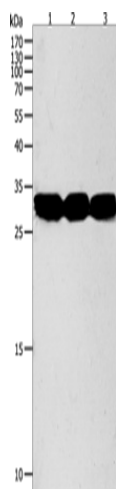
[View online »](#)

Background:

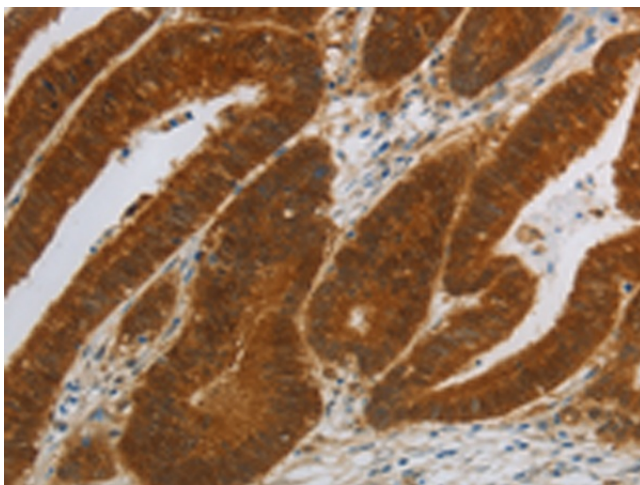
Has a omega-amidase activity. The role of omega-amidase is to remove potentially toxic intermediates by converting alpha-ketoglutaramate and alpha-ketosuccinamate to biologically useful alpha-ketoglutarate and oxaloacetate; respectively. Overexpression decreases the colony-forming capacity of cultured cells by arresting cells in the G2 phase of the cell cycle.

Synonyms:

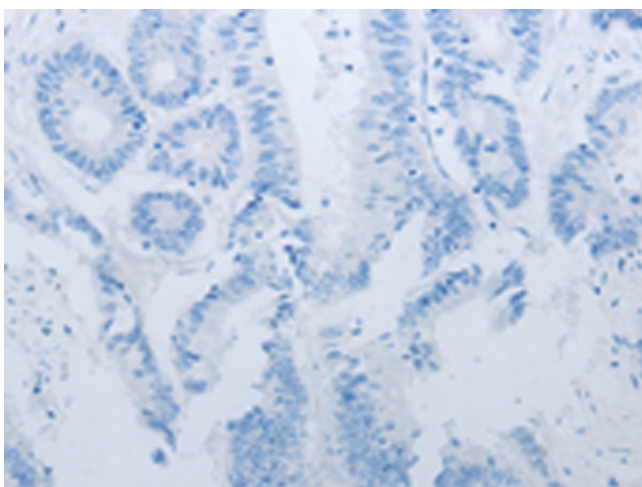
HEL-S-8a

Product images:


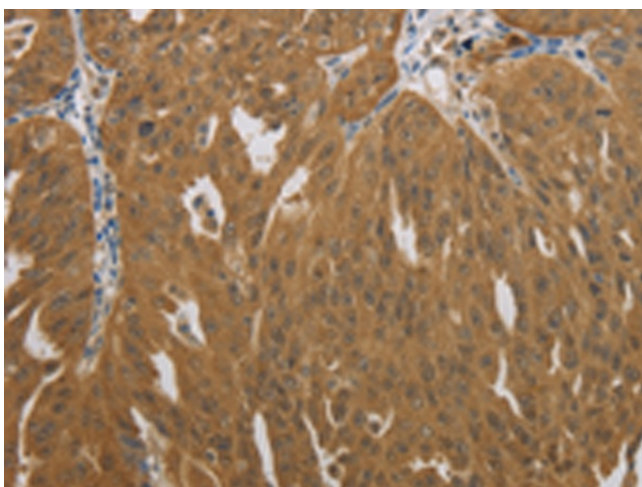
Gel: 10%SDS-PAGE
 Lysate: 40 µg
 Lane 1-3: Mouse liver tissue
 Mouse kidney tissue
 RAW264.7 cells
 Primary antibody: TA321872 (NIT2 Antibody) at dilution 1/950
 Secondary antibody: Goat anti rabbit IgG at 1/8000 dilution
 Exposure time: 90 seconds



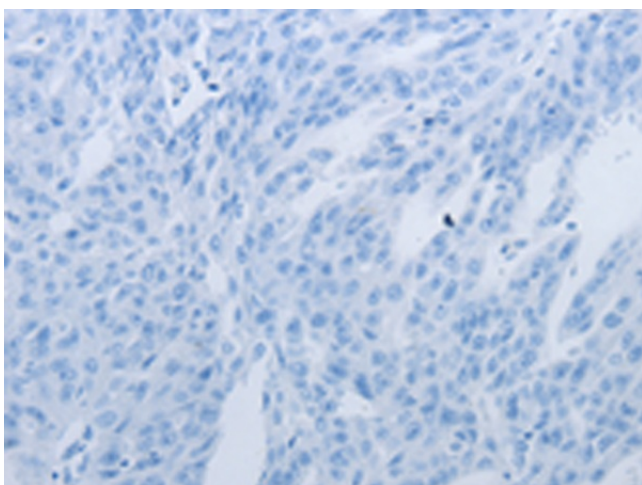
Immunohistochemistry of paraffin-embedded Human colon cancer tissue using TA321872 (NIT2 Antibody) at dilution 1/40 (Original magnification: ×200)



Immunohistochemistry of paraffin-embedded Human colon cancer tissue using TA321872 (NIT2 Antibody) at dilution 1/40, treated with synthetic peptide. (Original magnification: $\times 200$)



Immunohistochemistry of paraffin-embedded Human ovarian cancer tissue using TA321872 (NIT2 Antibody) at dilution 1/40 (Original magnification: $\times 200$)



Immunohistochemistry of paraffin-embedded Human ovarian cancer tissue using TA321872 (NIT2 Antibody) at dilution 1/40, treated with synthetic peptide. (Original magnification: $\times 200$)