

## Product datasheet for **TA321871S**

### NIT2 Rabbit Polyclonal Antibody

#### Product data:

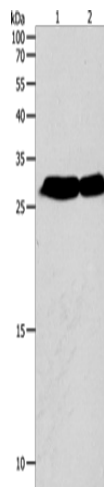
Product Type:	Primary Antibodies
Applications:	IHC, WB
Recommended Dilution:	WB: 200-1000 WB positive control: Mouse liver and kidney tissue IHC: 50-200 Positive control: Human ovarian cancer Predicted cell location: Cytoplasm, Nucleus
Reactivity:	Human, Mouse
Host:	Rabbit
Isotype:	IgG
Clonality:	Polyclonal
Immunogen:	Synthetic peptide corresponding to a region derived from 264-276 amino acids of Human itrilase family, member 2
Formulation:	PBS pH7.3, 0.05% NaN <sub>3</sub> , 50% glycerol
Purification:	Antigen affinity purification
Conjugation:	Unconjugated
Storage:	Store at -20°C as received.
Stability:	Stable for 12 months from date of receipt.
Predicted Protein Size:	31 kDa
Gene Name:	nitrilase family member 2
Database Link:	<a href="#">NP_064587</a> <a href="#">Entrez Gene 52633 Mouse</a> <a href="#">Entrez Gene 56954 Human</a> <a href="#">Q9NQR4</a>
Background:	Has a omega-amidase activity. The role of omega-amidase is to remove potentially toxic intermediates by converting alpha-ketoglutaramate and alpha-ketosuccinamate to biologically useful alpha-ketoglutarate and oxaloacetate; respectively. Overexpression decreases the colony-forming capacity of cultured cells by arresting cells in the G2 phase of the cell cycle.



[View online »](#)

Synonyms: HEL-S-8a

### Product images:



Gel: 10%SDS-PAGE

Lysate: 40 µg

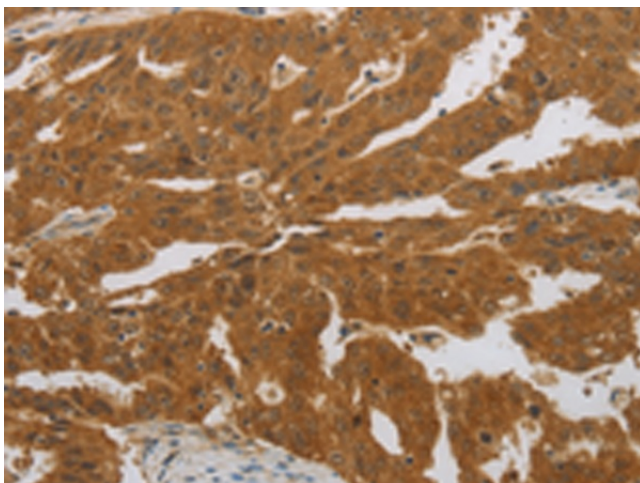
Lane 1-2: Mouse liver tissue

Mouse kidney tissue

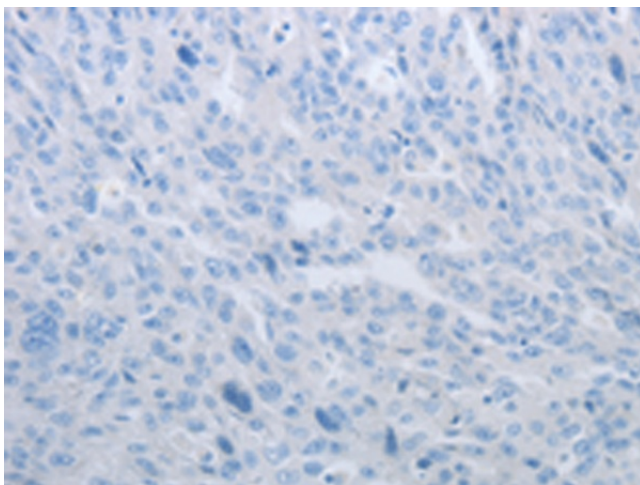
Primary antibody: [TA321871] (NIT2 Antibody) at dilution 1/100

Secondary antibody: Goat anti rabbit IgG at 1/8000 dilution

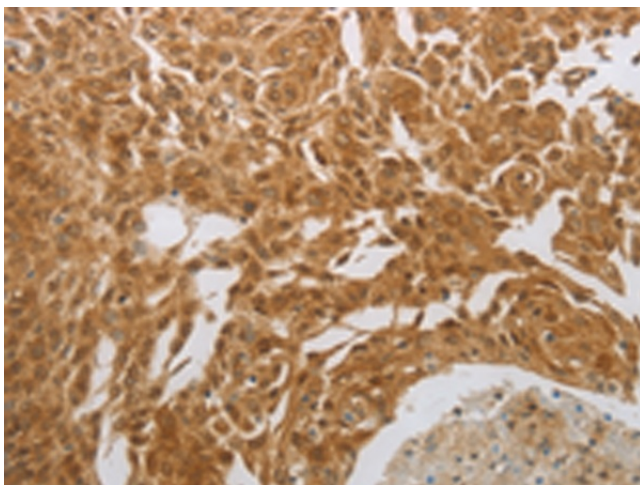
Exposure time: 90 seconds



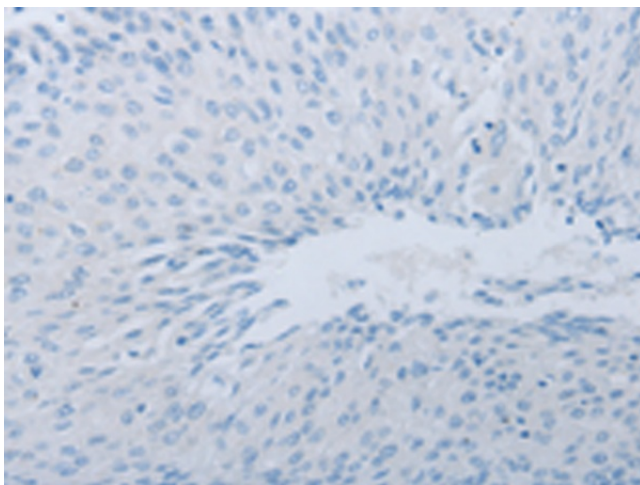
Immunohistochemistry of paraffin-embedded Human ovarian cancer tissue using [TA321871] (NIT2 Antibody) at dilution 1/40 (Original magnification: ×200)



Immunohistochemistry of paraffin-embedded Human ovarian cancer tissue using [TA321871] (NIT2 Antibody) at dilution 1/40, treated with synthetic peptide. (Original magnification:  $\times 200$ )



Immunohistochemistry of paraffin-embedded Human cervical cancer tissue using [TA321871] (NIT2 Antibody) at dilution 1/40 (Original magnification:  $\times 200$ )



Immunohistochemistry of paraffin-embedded Human cervical cancer tissue using [TA321871] (NIT2 Antibody) at dilution 1/40, treated with synthetic peptide. (Original magnification:  $\times 200$ )