

## Product datasheet for **TA321870**

### GRASP1 (GRIPAP1) Rabbit Polyclonal Antibody

#### Product data:

Product Type:	Primary Antibodies
Applications:	WB
Recommended Dilution:	WB: 1:500-1000
Reactivity:	Human, Mouse, Rat
Host:	Rabbit
Isotype:	IgG
Clonality:	Polyclonal
Immunogen:	Peptide sequence around aa. 814-818(Q-E-I-V-R ) derived from Rat GRASP
Formulation:	PBS pH7.3, 0.05% NaN <sub>3</sub> , 50% glycerol
Concentration:	lot specific
Purification:	Antigen affinity purification
Conjugation:	Unconjugated
Storage:	Store at -20°C as received.
Stability:	Stable for 12 months from date of receipt.
Predicted Protein Size:	96 kDa
Gene Name:	GRIP1 associated protein 1
Database Link:	<a href="#">NP_064522</a> <a href="#">Entrez Gene 54645 Mouse</a> <a href="#">Entrez Gene 116493 Rat</a> <a href="#">Entrez Gene 56850 Human</a> <a href="#">Q4V328</a>

**Background:** GRASP (GRP1-associated scaffold protein, tamalin) is a 395 amino acid protein encoded by the human gene GRASP . GRASP is a scaffold protein that comprises multiple protein-interacting domains, including a 95 kDa postsynaptic density protein (PSD-95)/discs-large/ZO-1 (PDZ) domain, a leucine-zipper region and a carboxyl-terminal PDZ-binding motif. GRASP is involved with intracellular trafficking and contributes to the macromolecular organization of group 1 metabotropic glutamate receptors (mGluRs) at synapses. GRASP forms a heteromer composed of GRASP , PSCD2 and at least one mGluR-1. It also interacts with PSCD3, mGluR-2, mGluR-3 and mGluR-5. GRASP is highly expressed in brain and has lower levels of expression in lung, heart, embryo, kidney and ovary.

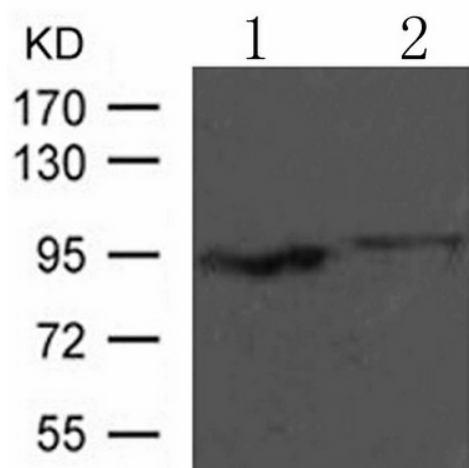


[View online »](#)

Synonyms: GRASP-1

Protein Families: Druggable Genome

**Product images:**



Predicted band size: 96 kDa. Positive control: Rat brain and mouse brain tissue lysate.  
Recommended dilution: 1/ 500-1000. (Gel: 8%SDS-PAGE Lane 1, 2: Rat brain and mouse brain tissue lysate Lysates: 30 ug per lane  
Primary antibody: 1/500 dilution Secondary antibody: Goat anti Rabbit IgG - H&L (HRP) at 1/10000 dilution Exposure time: 1 minute)