

Product datasheet for **TA321866**

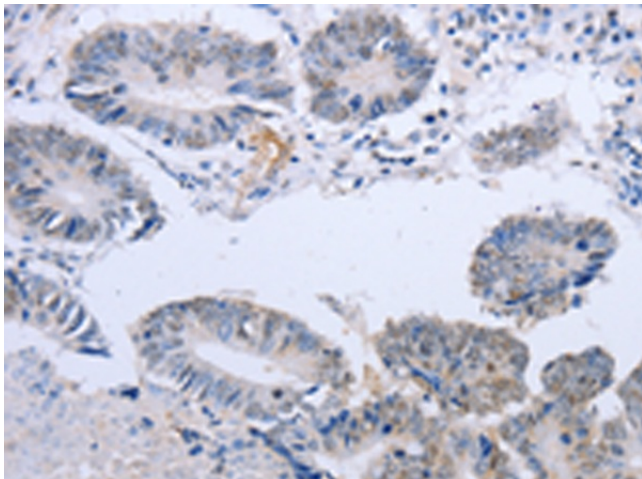
DOK5 Rabbit Polyclonal Antibody

Product data:

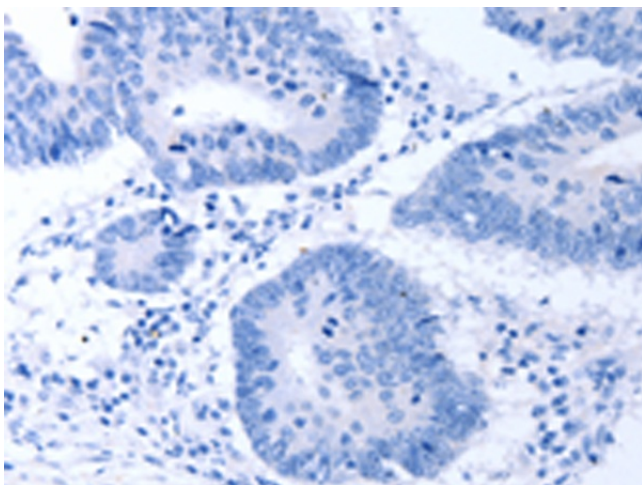
Product Type:	Primary Antibodies
Applications:	IHC
Recommended Dilution:	IHC: 10-50 Positive control: Human colon cancer Predicted cell location: Nucleus
Reactivity:	Human, Mouse
Host:	Rabbit
Isotype:	IgG
Clonality:	Polyclonal
Immunogen:	Full length fusion protein
Formulation:	PBS pH7.3, 0.05% NaN ₃ , 50% glycerol
Concentration:	lot specific
Purification:	Antigen affinity purification
Conjugation:	Unconjugated
Storage:	Store at -20°C as received.
Stability:	Stable for 12 months from date of receipt.
Gene Name:	docking protein 5
Database Link:	NP_060901 Entrez Gene 76829 Mouse Entrez Gene 55816 Human Q9P104
Background:	The protein encoded by this gene is a member of the DOK family of membrane proteins; which are adapter proteins involved in signal transduction. The encoded protein interacts with phosphorylated receptor tyrosine kinases to mediate neurite outgrowth and activation of the MAP kinase pathway. In contrast to other DOK family proteins; this protein does not interact with RASGAP.
Synonyms:	C20orf180; IRS-6; IRS6
Protein Families:	Druggable Genome



[View online »](#)

Product images:

Immunohistochemistry of paraffin-embedded Human colon cancer tissue using TA321866 (DOK5 Antibody) at dilution 1/20 (Original magnification: $\times 200$)



Immunohistochemistry of paraffin-embedded Human colon cancer tissue using TA321866 (DOK5 Antibody) at dilution 1/20, treated with fusion protein. (Original magnification: $\times 200$)