

Product datasheet for **TA321862**

PIWIL2 Rabbit Polyclonal Antibody

Product data:

Product Type:	Primary Antibodies
Applications:	IHC
Recommended Dilution:	IHC: 25-100 Positive control: Human colon cancer Predicted cell location: Cytoplasm
Reactivity:	Human
Host:	Rabbit
Isotype:	IgG
Clonality:	Polyclonal
Immunogen:	Synthetic peptide peptide corresponding to a region derived from 107-120 amino acids of human piwi-like 2 (Drosophila)
Formulation:	PBS pH7.3, 0.05% NaN ₃ , 50% glycerol
Concentration:	lot specific
Purification:	Antigen affinity purification
Conjugation:	Unconjugated
Storage:	Store at -20°C as received.
Stability:	Stable for 12 months from date of receipt.
Gene Name:	piwi like RNA-mediated gene silencing 2
Database Link:	NP_060538 Entrez Gene 55124 Human Q8TC59



[View online »](#)

Background:

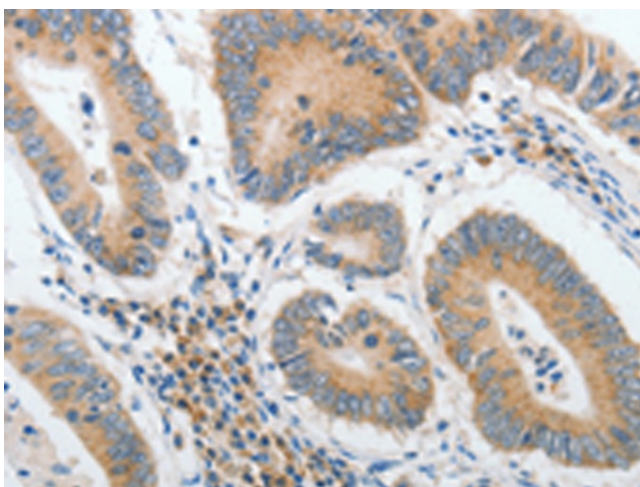
PIWIL2 belongs to the Argonaute family of proteins; which function in development and maintenance of germline stem cells. Plays a central role during spermatogenesis by repressing transposable elements and prevent their mobilization; which is essential for the germline integrity. Plays an essential role in meiotic differentiation of spermatocytes; germ cell differentiation and in self-renewal of spermatogonial stem cells. Its presence in oocytes suggests that it may participate in similar functions during oogenesis in females. Indirectly modulate expression of genes such as PDGFRB; SLC2A1; ITGA6; GJA7; THY1; CD9 and STRA8. Inhibits tumor cell growth when repressed. When overexpressed; acts as an oncogene by inhibition of apoptosis and promotion of proliferation in tumors

Synonyms:

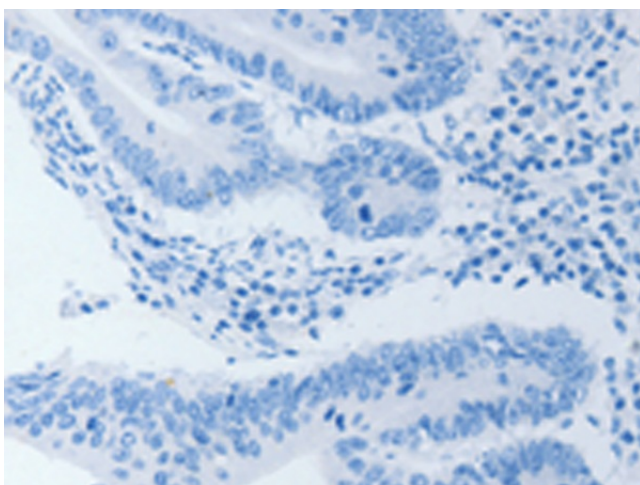
CT80; HILI; mili; PIWIL1L

Protein Pathways:

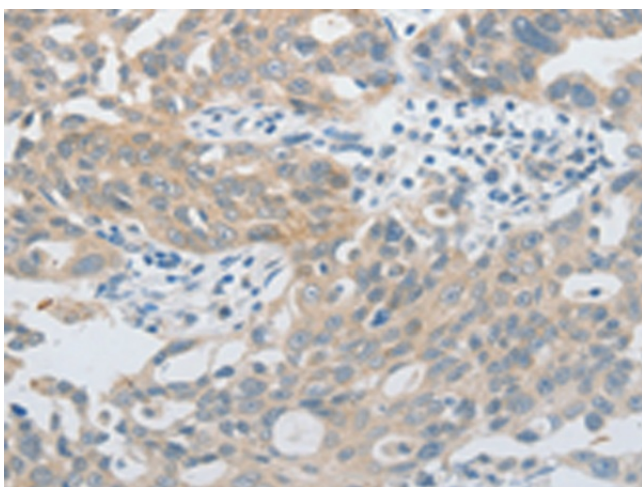
Dorso-ventral axis formation

Product images:

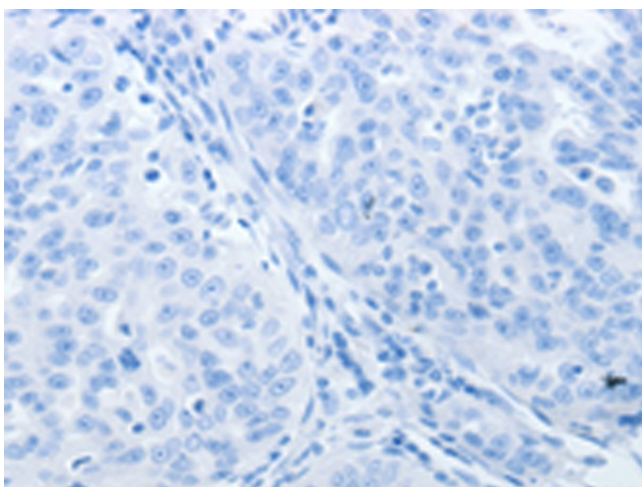
Immunohistochemistry of paraffin-embedded Human colon cancer tissue using TA321862 (PIWIL2 Antibody) at dilution 1/40 (Original magnification: x200)



Immunohistochemistry of paraffin-embedded Human colon cancer tissue using TA321862 (PIWIL2 Antibody) at dilution 1/40, treated with synthetic peptide. (Original magnification: x200)



Immunohistochemistry of paraffin-embedded Human ovarian cancer tissue using TA321862 (PIWIL2 Antibody) at dilution 1/40 (Original magnification: ×200)



Immunohistochemistry of paraffin-embedded Human ovarian cancer tissue using TA321862 (PIWIL2 Antibody) at dilution 1/40, treated with synthetic peptide. (Original magnification: ×200)