

## Product datasheet for **TA321859**

### **RAB39 (RAB39A) Rabbit Polyclonal Antibody**

#### **Product data:**

Product Type:	Primary Antibodies
Applications:	IHC
Recommended Dilution:	IHC: 5-25 Positive control: Human breast cancer Predicted cell location: Cytoplasm
Reactivity:	Human, Mouse
Host:	Rabbit
Isotype:	IgG
Clonality:	Polyclonal
Immunogen:	Synthetic peptide corresponding to a region derived from 130-145 amino acids of Human RAB39A, member RAS oncogene family
Formulation:	PBS pH7.3, 0.05% NaN <sub>3</sub> , 50% glycerol
Concentration:	lot specific
Purification:	Antigen affinity purification
Conjugation:	Unconjugated
Storage:	Store at -20°C as received.
Stability:	Stable for 12 months from date of receipt.
Gene Name:	RAB39A, member RAS oncogene family
Database Link:	<a href="#">NP_059986</a> <a href="#">Entrez Gene 54734 Human</a> <a href="#">Q14964</a>



[View online »](#)

**Background:**

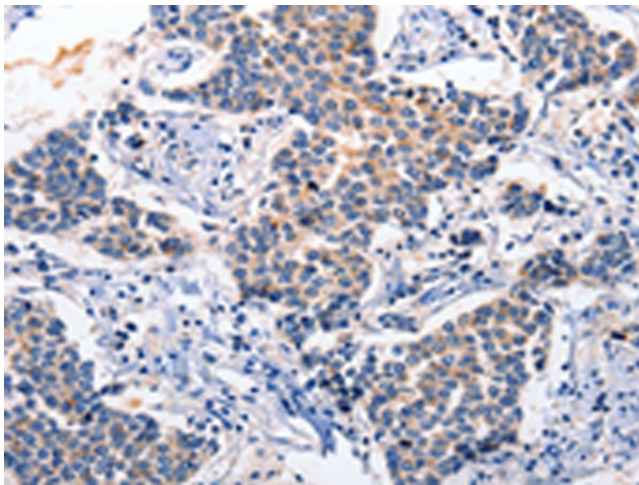
This gene encodes a protein which is a member of the Rab family. The Rab family of proteins is a member of the Ras superfamily of monomeric G proteins.[1] Approximately 70 types of Rabs have now been identified in humans. Rab GTPases regulate many steps of membrane traffic; including vesicle formation; vesicle movement along actin and tubulin networks; and membrane fusion. These processes make up the route through which cell surface proteins are trafficked from the Golgi to the plasma membrane and are recycled. Surface protein recycling returns proteins to the surface whose function involves carrying another protein or substance inside the cell; such as the transferrin receptor; or serves as a means of regulating the number of a certain type of protein molecules on the surface.

**Synonyms:**

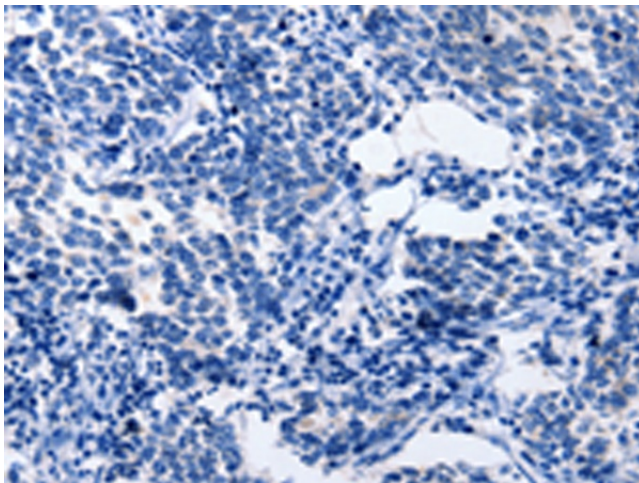
RAB39

**Protein Families:**

Druggable Genome

**Product images:**

Immunohistochemistry of paraffin-embedded Human breast cancer tissue using TA321859 (RAB39A Antibody) at dilution 1/5 (Original magnification:  $\times 200$ )



Immunohistochemistry of paraffin-embedded Human breast cancer tissue using TA321859 (RAB39A Antibody) at dilution 1/5, treated with synthetic peptide. (Original magnification:  $\times 200$ )