

Product datasheet for **TA321858**

RAB39 (RAB39A) Rabbit Polyclonal Antibody

Product data:

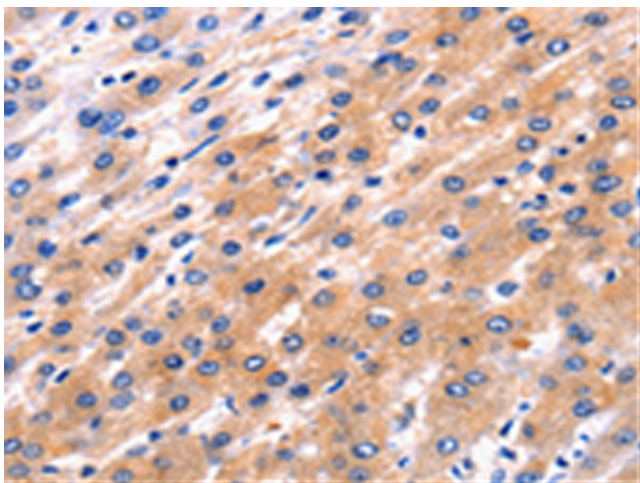
Product Type:	Primary Antibodies
Applications:	IHC
Recommended Dilution:	IHC: 5-25 Positive control: Human liver cancer Predicted cell location: Cytoplasm
Reactivity:	Human, Mouse
Host:	Rabbit
Isotype:	IgG
Clonality:	Polyclonal
Immunogen:	Synthetic peptide corresponding to a region derived from 130-143 amino acids of Human Ras-related protein Rab-39A
Formulation:	PBS pH7.3, 0.05% NaN ₃ , 50% glycerol
Concentration:	lot specific
Purification:	Antigen affinity purification
Conjugation:	Unconjugated
Storage:	Store at -20°C as received.
Stability:	Stable for 12 months from date of receipt.
Gene Name:	RAB39A, member RAS oncogene family
Database Link:	NP_059986 Entrez Gene 54734 Human Q14964
Background:	This gene encodes a small GTP-binding protein that belongs to the largest family within the Ras superfamily. Rab39 is a Golgi-associated protein involved in endocytosis of HeLa cells. It contains conserved motifs referred to phosphate/guanosine binding and a microbody C-terminal targeting signal. Rab39 is mostly detected in epithelial cell lines and expressed ubiquitously in human tissues. It can facilitate endocytosis in HeLa cells when expressed transiently and stably.
Synonyms:	RAB39



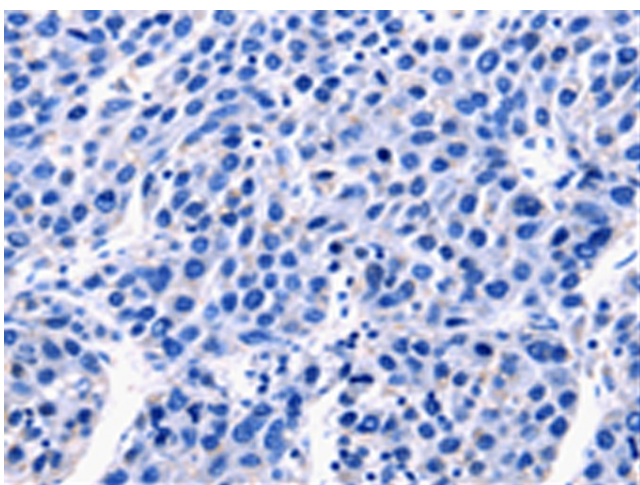
[View online »](#)

Protein Families: Druggable Genome

Product images:



Immunohistochemistry of paraffin-embedded Human liver cancer tissue using TA321858 (RAB39A Antibody) at dilution 1/5 (Original magnification: $\times 200$)



Immunohistochemistry of paraffin-embedded Human liver cancer tissue using TA321858 (RAB39A Antibody) at dilution 1/5, treated with synthetic peptide. (Original magnification: $\times 200$)