

Product datasheet for **TA321857**

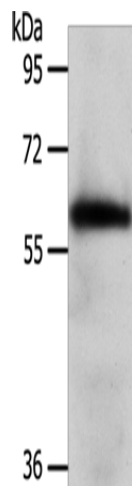
WDR1 Rabbit Polyclonal Antibody

Product data:

Product Type:	Primary Antibodies
Applications:	WB
Recommended Dilution:	WB: 500-2000 WB positive control: Mouse brain tissue
Reactivity:	Human, Mouse, Rat
Host:	Rabbit
Isotype:	IgG
Clonality:	Polyclonal
Immunogen:	Synthetic peptide corresponding to a region derived from 562-577 amino acids of human WD repeat domain 1
Formulation:	PBS pH7.3, 0.05% NaN ₃ , 50% glycerol
Concentration:	lot specific
Purification:	Antigen affinity purification
Conjugation:	Unconjugated
Storage:	Store at -20°C as received.
Stability:	Stable for 12 months from date of receipt.
Predicted Protein Size:	66 kDa
Gene Name:	WD repeat domain 1
Database Link:	NP_059830 Entrez Gene 22388 Mouse Entrez Gene 360950 Rat Entrez Gene 9948 Human O75083
Background:	This gene encodes a protein containing 9 WD repeats. WD repeats are approximately 30- to 40-amino acid domains containing several conserved residues; mostly including a trp-asp at the C-terminal end. WD domains are involved in protein-protein interactions. The encoded protein may help induce the disassembly of actin filaments. Two transcript variants encoding different isoforms have been found for this gene.
Synonyms:	AIP1; HEL-S-52; NORI-1



[View online »](#)

Product images:

Gel: 10%SDS-PAGE
Lysate: 40 µg
Lane: Mouse brain tissue
Primary antibody: TA321857 (WDR1 Antibody) at dilution 1/1000
Secondary antibody: Goat anti rabbit IgG at 1/8000 dilution
Exposure time: 10 seconds