

## Product datasheet for **TA321855**

### **TWEAKR (TNFRSF12A) Rabbit Polyclonal Antibody**

#### **Product data:**

<b>Product Type:</b>	Primary Antibodies
<b>Applications:</b>	IHC, WB
<b>Recommended Dilution:</b>	ELISA: 1:1000-2000, WB: 1:200-1000, IHC: 1:5-20
<b>Reactivity:</b>	Human, Mouse, Rat
<b>Host:</b>	Rabbit
<b>Isotype:</b>	IgG
<b>Clonality:</b>	Polyclonal
<b>Immunogen:</b>	Fusion protein corresponding to a region derived from 28-129 amino acids of human tumor necrosis factor receptor superfamily, member 12A
<b>Formulation:</b>	PBS pH7.3, 0.05% NaN <sub>3</sub> , 50% glycerol
<b>Concentration:</b>	lot specific
<b>Purification:</b>	Antigen affinity purification
<b>Conjugation:</b>	Unconjugated
<b>Storage:</b>	Store at -20°C as received.
<b>Stability:</b>	Stable for 12 months from date of receipt.
<b>Predicted Protein Size:</b>	14 kDa
<b>Gene Name:</b>	tumor necrosis factor receptor superfamily member 12A
<b>Database Link:</b>	<a href="#">NP_057723</a> <a href="#">Entrez Gene 27279 Mouse</a> <a href="#">Entrez Gene 302965 Rat</a> <a href="#">Entrez Gene 51330 Human</a> <a href="#">Q9NP84</a>
<b>Background:</b>	Tumor necrosis factor receptor superfamily member 12A?also known as the?Tweak-receptor? (TweakR) is a protein?that in humans is encoded by the?TNFRSF12A?gene. Receptor for TNFSF12/TWEAK. Weak inducer of apoptosis in some cell types. Promotes angiogenesis and the proliferation of endothelial cells. May modulate cellular adhesion to matrix proteins. Highly expressed in heart; placenta and kidney. Intermediate expression in lung; skeletal muscle and pancreas.
<b>Synonyms:</b>	CD266; FN14; TWEAKR

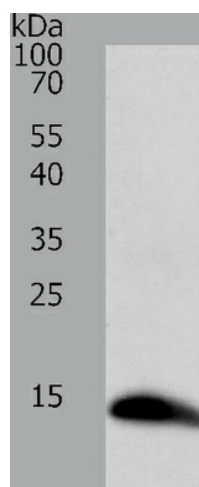


[View online »](#)

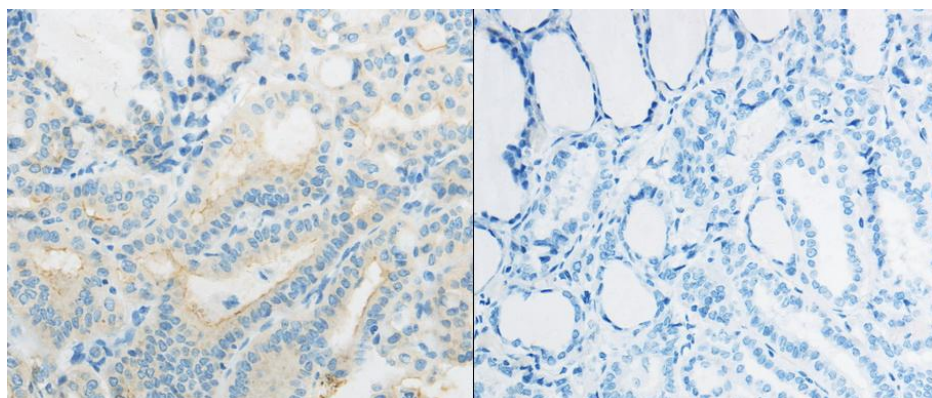
**Protein Families:** Druggable Genome, Transmembrane

**Protein Pathways:** Cytokine-cytokine receptor interaction

**Product images:**



Predicted band size: 14 kDa. Positive control: 293T cell lysate. Recommended dilution: 1/200-1000. (Gel: 12%SDS-PAGE Lysate: 40 ug per lane Primary antibody: 1/100 dilution Secondary antibody: Goat anti Rabbit IgG - H&L (HRP) at 1/10000 dilution Exposure time: 10 seconds)



Predicted cell location: Cytoplasm. Positive control: Human thyroid cancer tissue. Recommended dilution: 1/5-20 The image on the left is immunohistochemistry of paraffin-embedded human thyroid cancer tissue using TNFRSF12A antibody at dilution 1/10, on the right is treated with the fusion protein. (Original magnification:x200)