

## Product datasheet for **TA321854S**

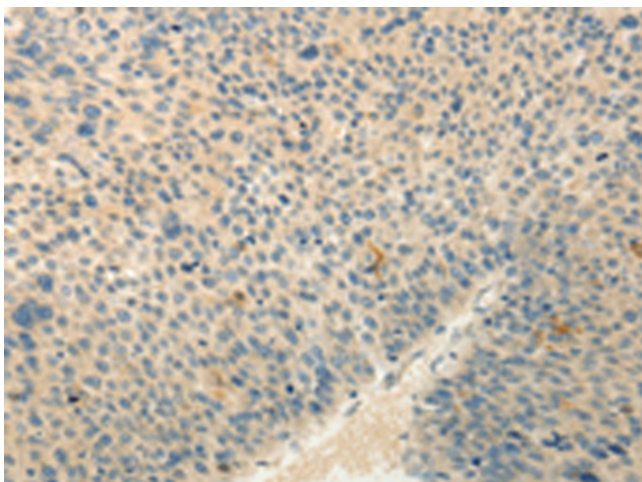
### Relaxin 3 receptor 1 (RXFP3) Rabbit Polyclonal Antibody

#### Product data:

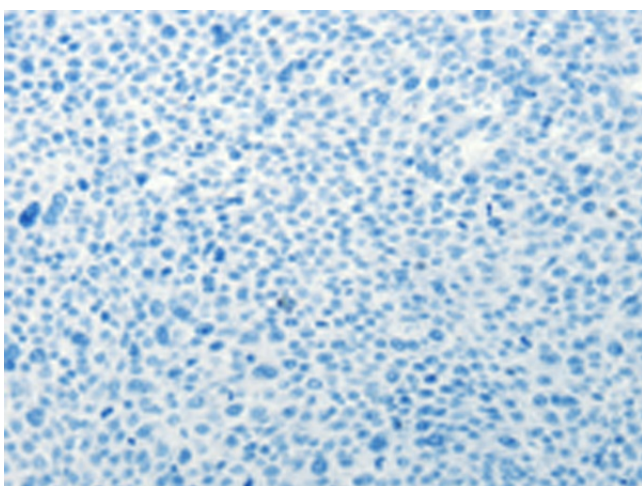
Product Type:	Primary Antibodies
Applications:	IHC
Recommended Dilution:	IHC: 25-100 Positive control: Human liver cancer Predicted cell location: Cytoplasm
Reactivity:	Human, Mouse
Host:	Rabbit
Isotype:	IgG
Clonality:	Polyclonal
Immunogen:	Synthetic peptide corresponding to a region derived from 456-468 amino acids of human relaxin/insulin-like family peptide receptor 3
Formulation:	PBS pH7.3, 0.05% NaN <sub>3</sub> , 50% glycerol
Purification:	Antigen affinity purification
Conjugation:	Unconjugated
Storage:	Store at -20°C as received.
Stability:	Stable for 12 months from date of receipt.
Gene Name:	relaxin/insulin like family peptide receptor 3
Database Link:	<a href="#">NP_057652</a> <a href="#">Entrez Gene 239336 Mouse</a> <a href="#">Entrez Gene 51289 Human</a> <a href="#">Q9NSD7</a>
Background:	Relaxin-3 is a highly conserved neuropeptide in vertebrate species and binds to the Class A G protein-coupled receptor (GPCR) RXFP3. Relaxin-3 is involved in a wide range of behaviors and targeting of RXFP3 may be relevant for a range of neurological diseases. RXFP3; confirmed that acute and chronic activation of RXFP3 increased feeding and weight gain; and produced changes in plasma leptin and insulin.
Synonyms:	GPCR135; RLN3R1; RXFP3; SALPR
Protein Families:	Druggable Genome, GPCR, Transmembrane



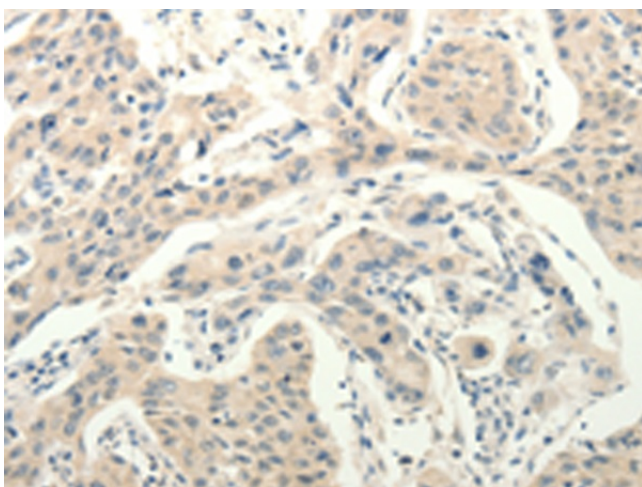
[View online »](#)

**Product images:**

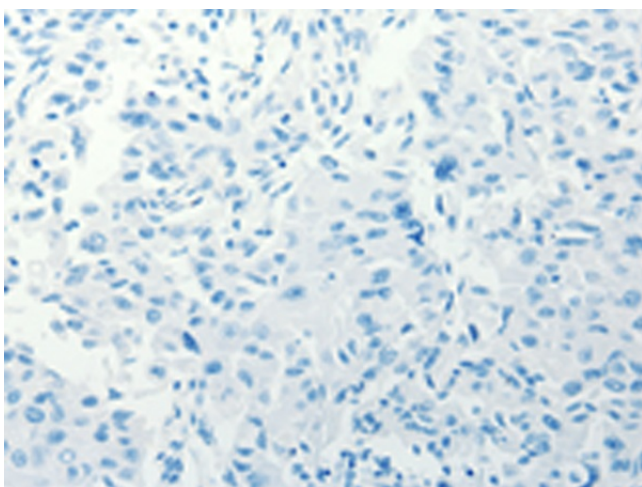
Immunohistochemistry of paraffin-embedded Human liver cancer tissue using [TA321854] (RXFP3 Antibody) at dilution 1/30 (Original magnification:  $\times 200$ )



Immunohistochemistry of paraffin-embedded Human liver cancer tissue using [TA321854] (RXFP3 Antibody) at dilution 1/30, treated with synthetic peptide. (Original magnification:  $\times 200$ )



Immunohistochemistry of paraffin-embedded Human lung cancer tissue using [TA321854] (RXFP3 Antibody) at dilution 1/30 (Original magnification:  $\times 200$ )



Immunohistochemistry of paraffin-embedded Human lung cancer tissue using [TA321854] (RXFP3 Antibody) at dilution 1/30, treated with synthetic peptide. (Original magnification:  $\times 200$ )