

Product datasheet for **TA321853**

Relaxin 3 receptor 1 (RXFP3) Rabbit Polyclonal Antibody

Product data:

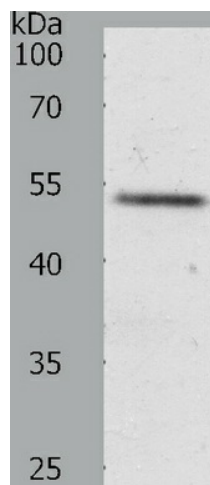
Product Type:	Primary Antibodies
Applications:	IHC, WB
Recommended Dilution:	ELISA: 1:1000-2000, WB: 1:200-1000, IHC: 1:25-100
Reactivity:	Human, Mouse, Rat
Host:	Rabbit
Isotype:	IgG
Clonality:	Polyclonal
Immunogen:	Synthetic peptide corresponding to a region derived from 456-468 amino acids of human relaxin/insulin-like family peptide receptor 3
Formulation:	PBS pH7.3, 0.05% NaN ₃ , 50% glycerol
Concentration:	lot specific
Purification:	Antigen affinity purification
Conjugation:	Unconjugated
Storage:	Store at -20°C as received.
Stability:	Stable for 12 months from date of receipt.
Predicted Protein Size:	51 kDa
Gene Name:	relaxin/insulin like family peptide receptor 3
Database Link:	NP_057652 Entrez Gene 239336 MouseEntrez Gene 294807 RatEntrez Gene 51289 Human Q9NSD7
Background:	Relaxin/insulin-like family peptide receptor 3, also known as RXFP3, is a human G-protein coupled receptor. Receptor for RNL3/relaxin-3. Binding of the ligand inhibit cAMP accumulation. Expressed predominantly in brain regions. Highest expression in substantia nigra and pituitary, followed by hippocampus, spinal cord, amygdala, caudate nucleus and corpus callosum, quite low level in cerebellum. In peripheral tissues, relatively high levels in adrenal glands, low levels in pancreas, salivary gland, placenta, mammary gland and testis.
Synonyms:	GPCR135; RLN3R1; RXFPR3; SALPR



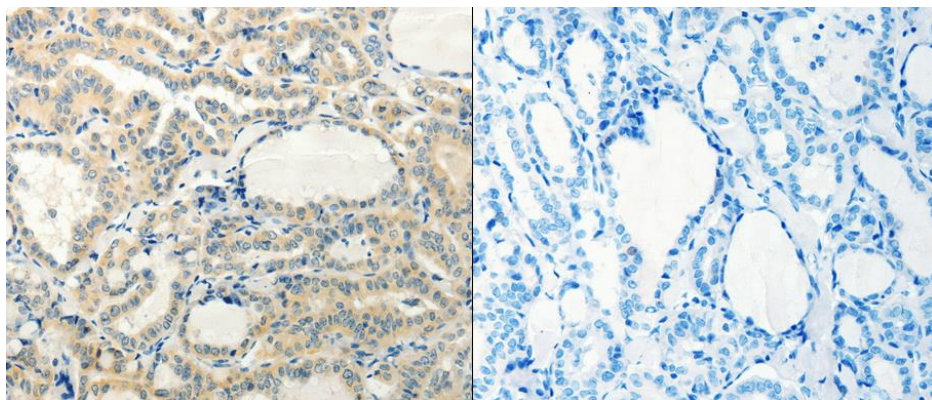
[View online »](#)

Protein Families: Druggable Genome, GPCR, Transmembrane

Product images:



Predicted band size: 51 kDa. Positive control: Jurkat cell lysate. Recommended dilution: 1/200-1000. (Gel: 10%SDS-PAGE Lysate: 40 ug Primary antibody: 1/350 dilution Secondary antibody: Goat anti Rabbit IgG - H&L (HRP) at 1/10000 dilution Exposure time: 10 minutes)



Predicted cell location: Cytoplasm. Positive control: Human thyroid cancer tissue. Recommended dilution: 1/25-100 The image on the left is immunohistochemistry of paraffin-embedded Human thyroid cancer using RXFP3 antibody at dilution 1/20, on the right is treated with the synthetic peptide. (Original magnification: x 200)