

## Product datasheet for **TA321849**

### CLECSF6 (CLEC4A) Rabbit Polyclonal Antibody

#### Product data:

Product Type:	Primary Antibodies
Applications:	IHC, WB
Recommended Dilution:	WB: 200-1000 WB positive control: BGC-823 cell lysate IHC: 200-400 Positive control: Human liver cancer Predicted cell location: Cytoplasm
Reactivity:	Human
Host:	Rabbit
Isotype:	IgG
Clonality:	Polyclonal
Immunogen:	Fusion protein corresponding to a region derived from 70-237 amino acids of human C-type lectin domain family 4, member A
Formulation:	PBS pH7.3, 0.05% NaN <sub>3</sub> , 50% glycerol
Concentration:	lot specific
Purification:	Antigen affinity purification
Conjugation:	Unconjugated
Storage:	Store at -20°C as received.
Stability:	Stable for 12 months from date of receipt.
Predicted Protein Size:	28 kDa
Gene Name:	C-type lectin domain family 4 member A
Database Link:	<a href="#">NP_057268</a> <a href="#">Entrez Gene 50856 Human</a> <a href="#">Q9UMR7</a>



[View online »](#)

**Background:**

This gene encodes a member of the C-type lectin/C-type lectin-like domain (CTL/CTLD) superfamily. Members of this family share a common protein fold and have diverse functions, such as cell adhesion, cell-cell signalling, glycoprotein turnover, and roles in inflammation and immune response. The encoded type 2 transmembrane protein may play a role in inflammatory and immune response. Multiple transcript variants encoding distinct isoforms have been identified for this gene. This gene is closely linked to other CTL/CTLD superfamily members on chromosome 12p13 in the natural killer gene complex region.

**Synonyms:**

CLECSF6; DCIR; DDB27; HDCGC13P; LLIR

**Protein Families:**

Druggable Genome, Transmembrane

**Product images:**

kDa

95—  
72—  
55—  
36—  
28—  
17—  
10—



Gel: 8%SDS-PAGE

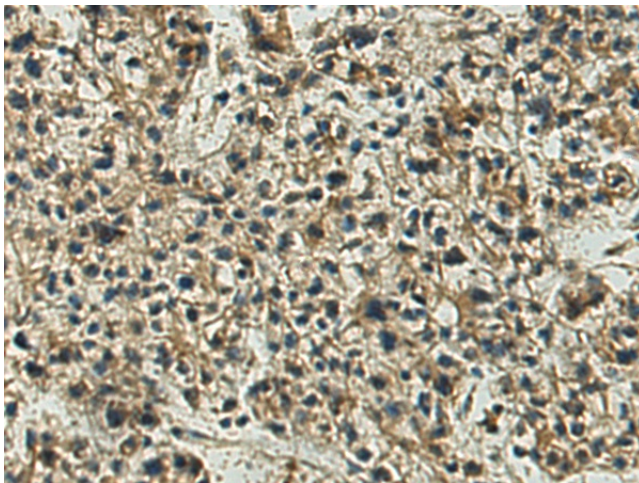
Lysate: 40 µg

Lane: BGC-823 cell lysate

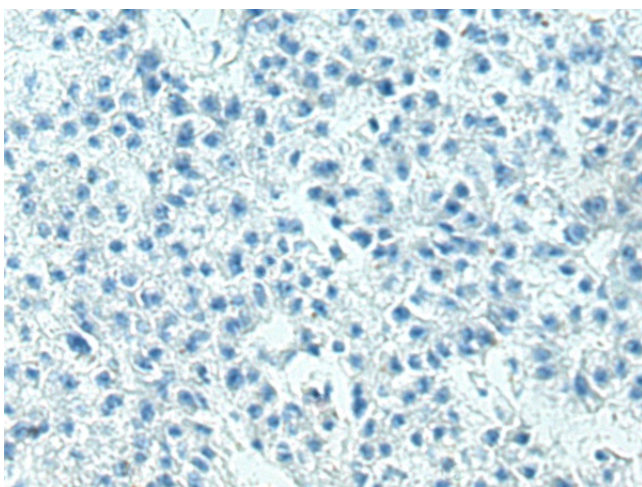
Primary antibody: TA321849 (CLEC4A Antibody)  
at dilution 1/400

Secondary antibody: Goat anti rabbit IgG at  
1/5000 dilution

Exposure time: 1 minute



Immunohistochemistry of paraffin-embedded  
Human liver cancer tissue using TA321849  
(CLEC4A Antibody) at dilution 1/200 (Original  
magnification: ×200)



Immunohistochemistry of paraffin-embedded Human liver cancer tissue using TA321849 (CLEC4A Antibody) at dilution 1/200, treated with fusion protein. (Original magnification: ×200)