

Product datasheet for **TA321848**

CLECSF6 (CLEC4A) Rabbit Polyclonal Antibody

Product data:

Product Type:	Primary Antibodies
Applications:	WB
Recommended Dilution:	WB: 500-2000 WB positive control: Mouse liver tissue
Reactivity:	Human, Mouse
Host:	Rabbit
Isotype:	IgG
Clonality:	Polyclonal
Immunogen:	Fusion protein corresponding to a region derived from 70-237 amino acids of human C-type lectin domain family 4, member A
Formulation:	PBS pH7.3, 0.05% NaN ₃ , 50% glycerol
Concentration:	lot specific
Purification:	Antigen affinity purification
Conjugation:	Unconjugated
Storage:	Store at -20°C as received.
Stability:	Stable for 12 months from date of receipt.
Predicted Protein Size:	28 kDa
Gene Name:	C-type lectin domain family 4 member A
Database Link:	NP_057268 Entrez Gene 50856 Human Q9UMR7
Background:	This gene encodes a member of the C-type lectin/C-type lectin-like domain (CTL/CTLD) superfamily. Members of this family share a common protein fold and have diverse functions; such as cell adhesion; cell-cell signalling; glycoprotein turnover; and roles in inflammation and immune response. The encoded type 2 transmembrane protein may play a role in inflammatory and immune response. Multiple transcript variants encoding distinct isoforms have been identified for this gene. This gene is closely linked to other CTL/CTLD superfamily members on chromosome 12p13 in the natural killer gene complex region.

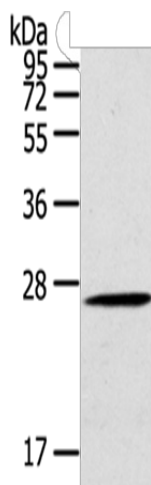


[View online »](#)

Synonyms: CLECSF6; DCIR; DDB27; HDCGC13P; LLIR

Protein Families: Druggable Genome, Transmembrane

Product images:



Gel: 10%SDS-PAGE

Lysate: 40 μ g

Lane: Mouse liver tissue

Primary antibody: TA321848 (CLEC4A Antibody)
at dilution 1/100

Secondary antibody: Goat anti rabbit IgG at
1/8000 dilution

Exposure time: 1 minute