

## Product datasheet for **TA321847S**

### Adiponectin Receptor 1 (ADIPOR1) Rabbit Polyclonal Antibody

#### Product data:

|                         |   |
|-------------------------|---|
| Product Type:           | Primary Antibodies  |
| Applications:           | IHC, WB   |
| Recommended Dilution:   | WB: 200-1000<br>WB positive control: Mouse thymus tissue<br>IHC: 25-100<br>Positive control: Human esophagus cancer<br>Predicted cell location: Cytoplasm   |
| Reactivity:             | Human, Mouse  |
| Host:                   | Rabbit  |
| Isotype:                | IgG   |
| Clonality:              | Polyclonal  |
| Immunogen:              | Fusion protein corresponding to a region derived from 1-136 amino acids of human adiponectin receptor 1   |
| Formulation:            | PBS pH7.3, 0.05% NaN <sub>3</sub> , 50% glycerol  |
| Purification:           | Antigen affinity purification   |
| Conjugation:            | Unconjugated  |
| Storage:                | Store at -20°C as received.   |
| Stability:              | Stable for 12 months from date of receipt.  |
| Predicted Protein Size: | 43 kDa  |
| Gene Name:              | adiponectin receptor 1  |
| Database Link:          | <a href="#">NP_057083</a><br><a href="#">Entrez Gene 72674 Mouse</a> <a href="#">Entrez Gene 51094 Human</a><br><a href="#">Q96A54</a>  |
| Background:             | This gene encodes a protein which acts as a receptor for adiponectin; a hormone secreted by adipocytes which regulates fatty acid catabolism and glucose levels. Binding of adiponectin to the encoded protein results in activation of an AMP-activated kinase signaling pathway which affects levels of fatty acid oxidation and insulin sensitivity. A pseudogene of this gene is located on chromosome 14.? |



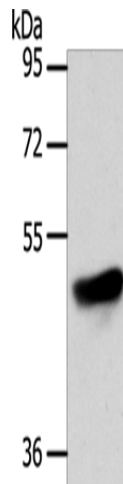
[View online »](#)

**Synonyms:** ACDCR1; CGI-45; CGI45; PAQR1; TESBP1A

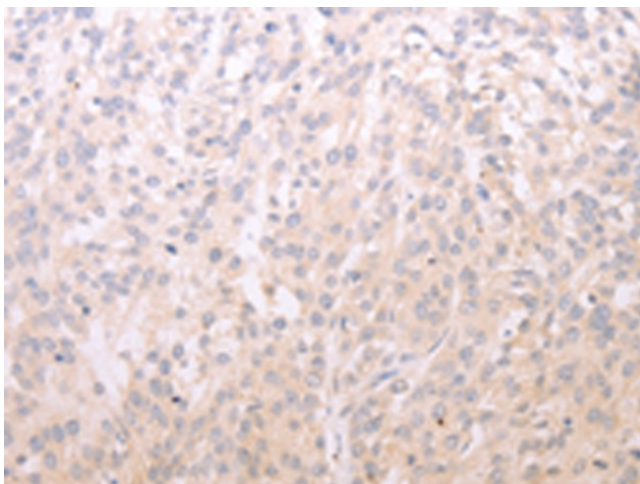
**Protein Families:** Druggable Genome, Transmembrane

**Protein Pathways:** Adipocytokine signaling pathway

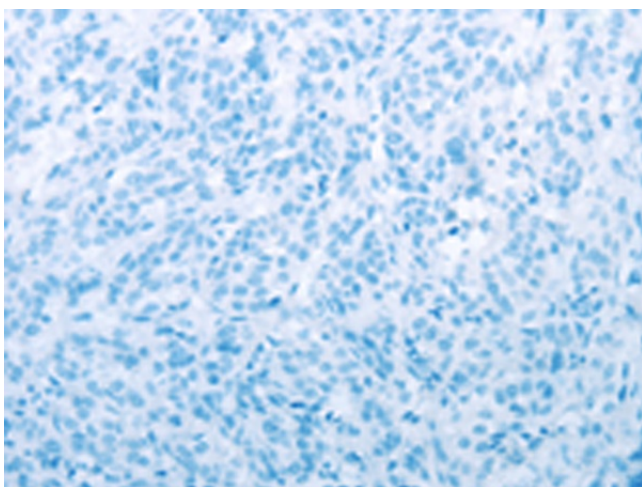
**Product images:**



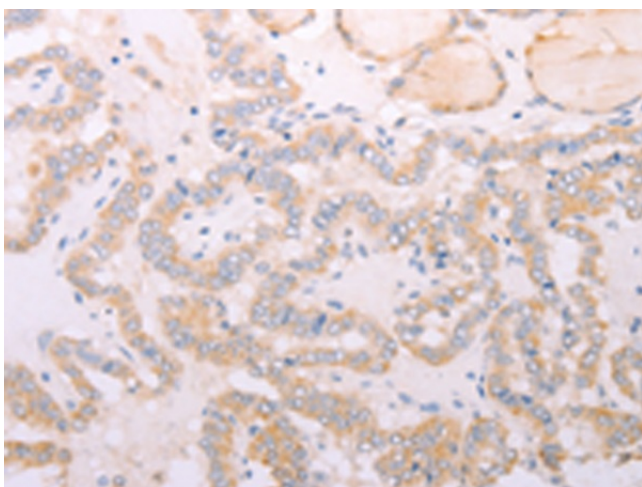
Gel: 8%SDS-PAGE  
 Lysate: 40 µg  
 Lane: Mouse thymus tissue  
 Primary antibody: [TA321847] (ADIPOR1 Antibody) at dilution 1/200  
 Secondary antibody: Goat anti rabbit IgG at 1/8000 dilution  
 Exposure time: 2 minutes



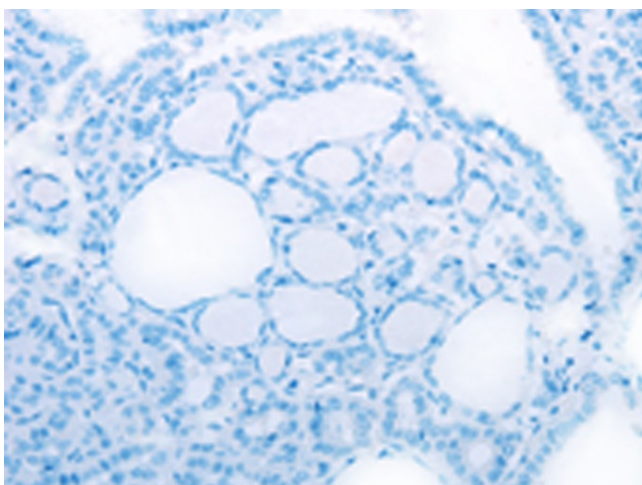
Immunohistochemistry of paraffin-embedded Human esophagus cancer tissue using [TA321847] (ADIPOR1 Antibody) at dilution 1/20 (Original magnification: ×200)



Immunohistochemistry of paraffin-embedded Human esophagus cancer tissue using [TA321847] (ADIPOR1 Antibody) at dilution 1/20, treated with fusion protein. (Original magnification:  $\times 200$ )



Immunohistochemistry of paraffin-embedded Human thyroid cancer tissue using [TA321847] (ADIPOR1 Antibody) at dilution 1/20 (Original magnification:  $\times 200$ )



Immunohistochemistry of paraffin-embedded Human thyroid cancer tissue using [TA321847] (ADIPOR1 Antibody) at dilution 1/20, treated with fusion protein. (Original magnification:  $\times 200$ )