

## Product datasheet for **TA321843S**

### PPAR gamma (PPARG) Rabbit Polyclonal Antibody

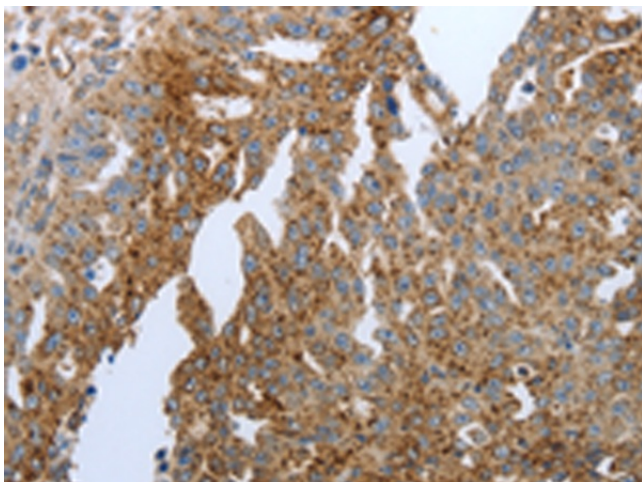
#### Product data:

Product Type:	Primary Antibodies
Applications:	IHC
Recommended Dilution:	IHC: 25-100 Positive control: Human ovarian cancer Predicted cell location: Cytoplasm
Reactivity:	Human, Mouse
Host:	Rabbit
Isotype:	IgG
Clonality:	Polyclonal
Immunogen:	Synthetic peptide corresponding to a region derived from 1-15 amino acids of Human peroxisome proliferator-activated receptor gamma
Formulation:	PBS pH7.3, 0.05% NaN <sub>3</sub> , 50% glycerol
Purification:	Antigen affinity purification
Conjugation:	Unconjugated
Storage:	Store at -20°C as received.
Stability:	Stable for 12 months from date of receipt.
Gene Name:	peroxisome proliferator activated receptor gamma
Database Link:	<a href="#">NP_005028</a> <a href="#">Entrez Gene 19016 Mouse</a> <a href="#">Entrez Gene 5468 Human</a> <a href="#">P37231</a>
Background:	This gene encodes a member of the peroxisome proliferator-activated receptor (PPAR) subfamily of nuclear receptors. PPARs form heterodimers with retinoid X receptors (RXRs) and these heterodimers regulate transcription of various genes. Three subtypes of PPARs are known: PPAR-alpha; PPAR-delta; and PPAR-gamma. The protein encoded by this gene is PPAR-gamma and is a regulator of adipocyte differentiation. Additionally; PPAR-gamma has been implicated in the pathology of numerous diseases including obesity; diabetes; atherosclerosis and cancer. Alternatively spliced transcript variants that encode different isoforms have been described.

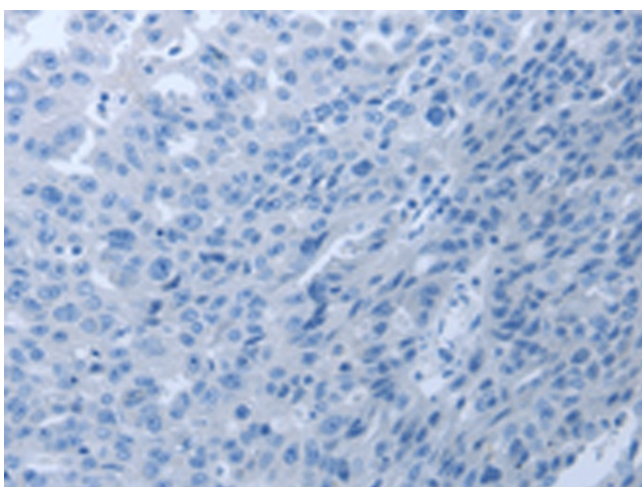


[View online »](#)

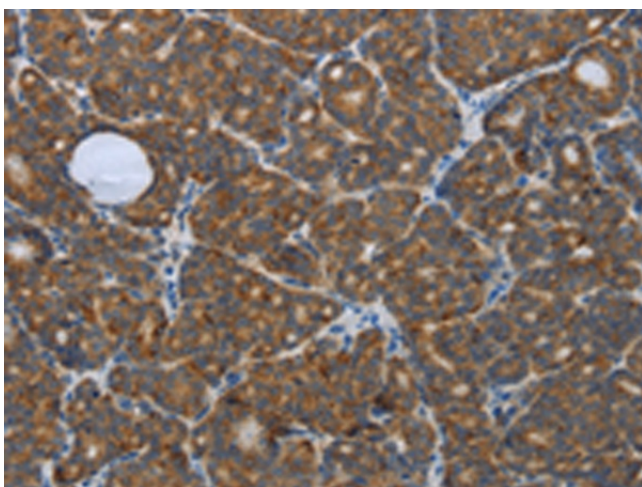
**Synonyms:** CIMT1; GLM1; NR1C3; PPARG1; PPARG2; PPARgamma  
**Protein Families:** Druggable Genome, Nuclear Hormone Receptor, Transcription Factors  
**Protein Pathways:** Huntington's disease, Pathways in cancer, PPAR signaling pathway, Thyroid cancer

**Product images:**

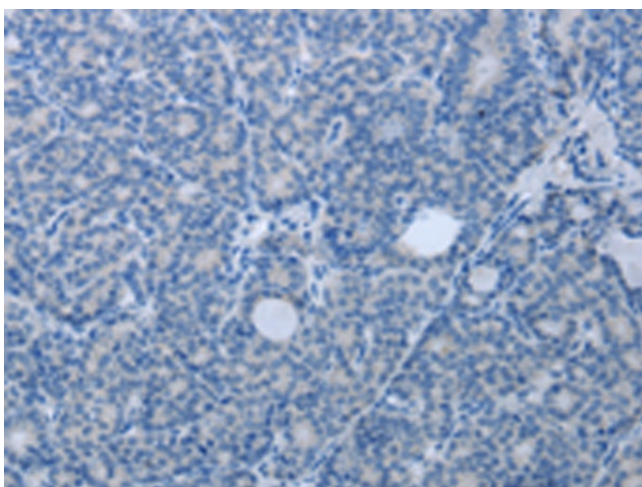
Immunohistochemistry of paraffin-embedded Human ovarian cancer tissue using [TA321843] (PPARG Antibody) at dilution 1/20 (Original magnification:  $\times 200$ )



Immunohistochemistry of paraffin-embedded Human ovarian cancer tissue using [TA321843] (PPARG Antibody) at dilution 1/20, treated with synthetic peptide. (Original magnification:  $\times 200$ )



Immunohistochemistry of paraffin-embedded Human thyroid cancer tissue using [TA321843] (PPARG Antibody) at dilution 1/20 (Original magnification:  $\times 200$ )



Immunohistochemistry of paraffin-embedded Human thyroid cancer tissue using [TA321843] (PPARG Antibody) at dilution 1/20, treated with synthetic peptide. (Original magnification:  $\times 200$ )