

Product datasheet for **TA321843**

PPAR gamma (PPARG) Rabbit Polyclonal Antibody

Product data:

| | |
|-----------------------|---|
| Product Type: | Primary Antibodies |
| Applications: | IHC |
| Recommended Dilution: | IHC: 25-100 Positive control: Human ovarian cancer Predicted cell location: Cytoplasm |
| Reactivity: | Human, Mouse |
| Host: | Rabbit |
| Isotype: | IgG |
| Clonality: | Polyclonal |
| Immunogen: | Synthetic peptide corresponding to a region derived from 1-15 amino acids of Human peroxisome proliferator-activated receptor gamma |
| Formulation: | PBS pH7.3, 0.05% NaN ₃ , 50% glycerol |
| Concentration: | lot specific |
| Purification: | Antigen affinity purification |
| Conjugation: | Unconjugated |
| Storage: | Store at -20°C as received. |
| Stability: | Stable for 12 months from date of receipt. |
| Gene Name: | peroxisome proliferator activated receptor gamma |
| Database Link: | NP_005028 Entrez Gene 19016 Mouse Entrez Gene 5468 Human P37231 |



[View online »](#)

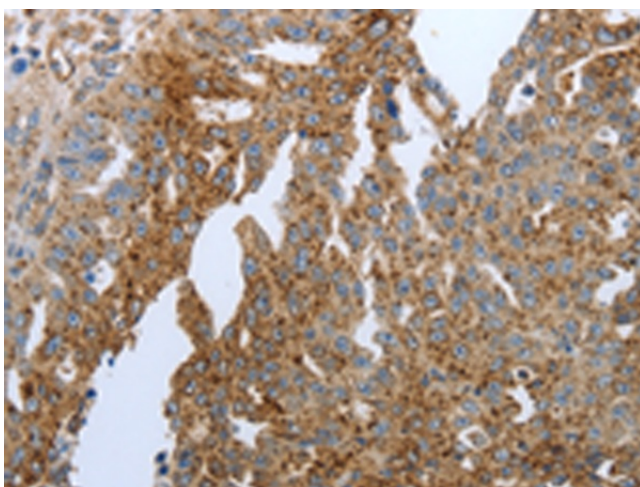
Background: This gene encodes a member of the peroxisome proliferator-activated receptor (PPAR) subfamily of nuclear receptors. PPARs form heterodimers with retinoid X receptors (RXRs) and these heterodimers regulate transcription of various genes. Three subtypes of PPARs are known: PPAR-alpha; PPAR-delta; and PPAR-gamma. The protein encoded by this gene is PPAR-gamma and is a regulator of adipocyte differentiation. Additionally, PPAR-gamma has been implicated in the pathology of numerous diseases including obesity; diabetes; atherosclerosis and cancer. Alternatively spliced transcript variants that encode different isoforms have been described.

Synonyms: CIMT1; GLM1; NR1C3; PPARG1; PPARG2; PPARgamma

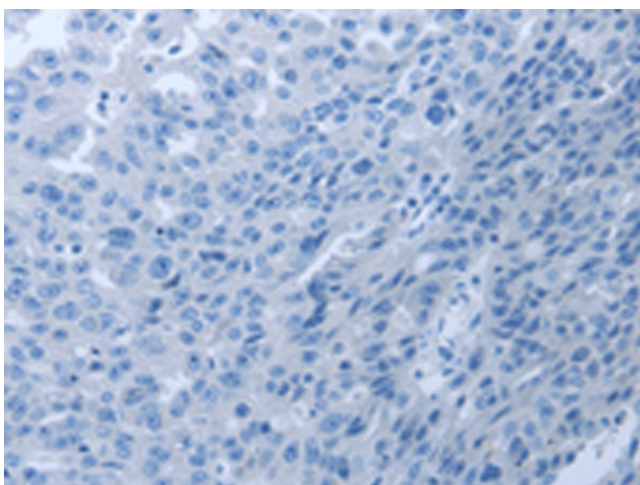
Protein Families: Druggable Genome, Nuclear Hormone Receptor, Transcription Factors

Protein Pathways: Huntington's disease, Pathways in cancer, PPAR signaling pathway, Thyroid cancer

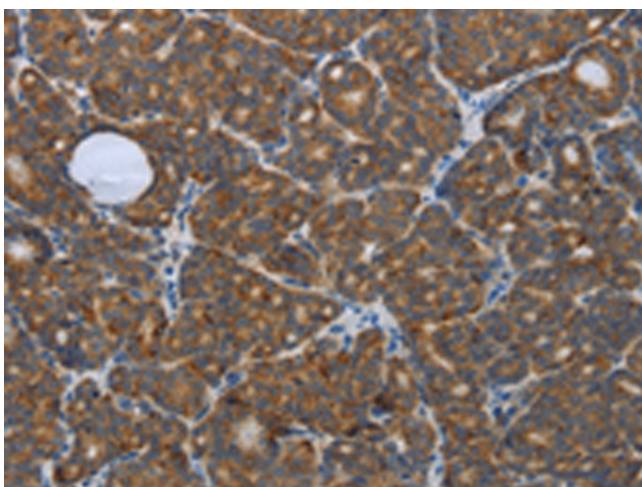
Product images:



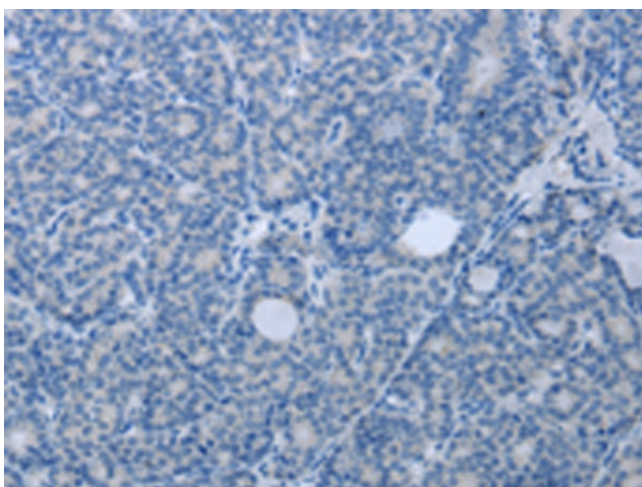
Immunohistochemistry of paraffin-embedded Human ovarian cancer tissue using TA321843 (PPARG Antibody) at dilution 1/20 (Original magnification: $\times 200$)



Immunohistochemistry of paraffin-embedded Human ovarian cancer tissue using TA321843 (PPARG Antibody) at dilution 1/20, treated with synthetic peptide. (Original magnification: $\times 200$)



Immunohistochemistry of paraffin-embedded Human thyroid cancer tissue using TA321843 (PPARG Antibody) at dilution 1/20 (Original magnification: $\times 200$)



Immunohistochemistry of paraffin-embedded Human thyroid cancer tissue using TA321843 (PPARG Antibody) at dilution 1/20, treated with synthetic peptide. (Original magnification: $\times 200$)