

Product datasheet for **TA321840S**

KRT23 Rabbit Polyclonal Antibody

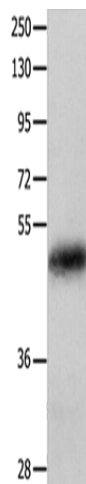
Product data:

Product Type:	Primary Antibodies
Applications:	WB
Recommended Dilution:	WB: 200-1000 WB positive control: Human colon cancer tissue
Reactivity:	Human, Mouse
Host:	Rabbit
Isotype:	IgG
Clonality:	Polyclonal
Immunogen:	Fusion protein corresponding to a region derived from 1-250 amino acids of human keratin 23 (histone deacetylase inducible)
Formulation:	PBS pH7.3, 0.05% NaN ₃ , 50% glycerol
Purification:	Antigen affinity purification
Conjugation:	Unconjugated
Storage:	Store at -20°C as received.
Stability:	Stable for 12 months from date of receipt.
Predicted Protein Size:	48 kDa
Gene Name:	keratin 23
Database Link:	NP_056330 Entrez Gene 94179 Mouse Entrez Gene 25984 Human Q9C075
Background:	Keratin; type I cytoskeletal 23 is a protein that in humans is encoded by the KRT23 gene. The protein encoded by this gene is a member of the keratin family. The keratins are intermediate filament proteins responsible for the structural integrity of epithelial cells and are subdivided into cytokeratins and hair keratins. The type I cytokeratins consist of acidic proteins which are arranged in pairs of heterotypic keratin chains. The type I cytokeratin genes are clustered in a region of chromosome 17q12-q21.?
Synonyms:	CK23; HAIK1; K23



[View online »](#)

Product images:



Gel: 10%SDS-PAGE
Lysate: 60 μ g
Lane: Human colon cancer tissue
Primary antibody: [TA321840] (KRT23 Antibody)
at dilution 1/100
Secondary antibody: Goat anti rabbit IgG at
1/8000 dilution
Exposure time: 1 minute