

## Product datasheet for **TA321840**

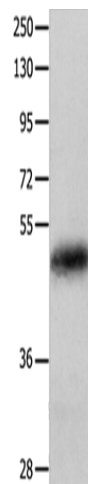
### KRT23 Rabbit Polyclonal Antibody

#### Product data:

|                         |   |
|-------------------------|---|
| Product Type:           | Primary Antibodies  |
| Applications:           | WB  |
| Recommended Dilution:   | WB: 200-1000<br>WB positive control: Human colon cancer tissue  |
| Reactivity:             | Human, Mouse  |
| Host:                   | Rabbit  |
| Isotype:                | IgG   |
| Clonality:              | Polyclonal  |
| Immunogen:              | Fusion protein corresponding to a region derived from 1-250 amino acids of human keratin 23 (histone deacetylase inducible)   |
| Formulation:            | PBS pH7.3, 0.05% NaN <sub>3</sub> , 50% glycerol  |
| Concentration:          | lot specific  |
| Purification:           | Antigen affinity purification   |
| Conjugation:            | Unconjugated  |
| Storage:                | Store at -20°C as received.   |
| Stability:              | Stable for 12 months from date of receipt.  |
| Predicted Protein Size: | 48 kDa  |
| Gene Name:              | keratin 23  |
| Database Link:          | <a href="#">NP_056330</a><br><a href="#">Entrez Gene 94179 Mouse</a> <a href="#">Entrez Gene 25984 Human</a><br><a href="#">Q9C075</a>  |
| Background:             | Keratin; type I cytoskeletal 23 is a protein that in humans is encoded by the KRT23 gene. The protein encoded by this gene is a member of the keratin family. The keratins are intermediate filament proteins responsible for the structural integrity of epithelial cells and are subdivided into cytokeratins and hair keratins. The type I cytokeratins consist of acidic proteins which are arranged in pairs of heterotypic keratin chains. The type I cytokeratin genes are clustered in a region of chromosome 17q12-q21.? |
| Synonyms:               | CK23; HAIK1; K23  |



[View online »](#)

**Product images:**

Gel: 10%SDS-PAGE  
Lysate: 60  $\mu$ g  
Lane: Human colon cancer tissue  
Primary antibody: TA321840 (KRT23 Antibody) at dilution 1/100  
Secondary antibody: Goat anti rabbit IgG at 1/8000 dilution  
Exposure time: 1 minute