

Product datasheet for **TA321839**

KRT23 Rabbit Polyclonal Antibody

Product data:

Product Type:	Primary Antibodies
Applications:	IHC, WB
Recommended Dilution:	WB: 500-2000 WB positive control: Hela cell lysate IHC: 50-200 Positive control: Human gastric cancer Predicted cell location: Cytoplasm
Reactivity:	Human, Mouse
Host:	Rabbit
Isotype:	IgG
Clonality:	Polyclonal
Immunogen:	Fusion protein corresponding to a region derived from 1-250 amino acids of human keratin 23 (histone deacetylase inducible)
Formulation:	PBS pH7.3, 0.05% NaN ₃ , 50% glycerol
Concentration:	lot specific
Purification:	Antigen affinity purification
Conjugation:	Unconjugated
Storage:	Store at -20°C as received.
Stability:	Stable for 12 months from date of receipt.
Predicted Protein Size:	48 kDa
Gene Name:	keratin 23
Database Link:	NP_056330 Entrez Gene 94179 Mouse Entrez Gene 25984 Human Q9C075

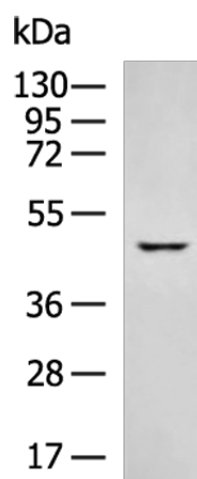


[View online »](#)

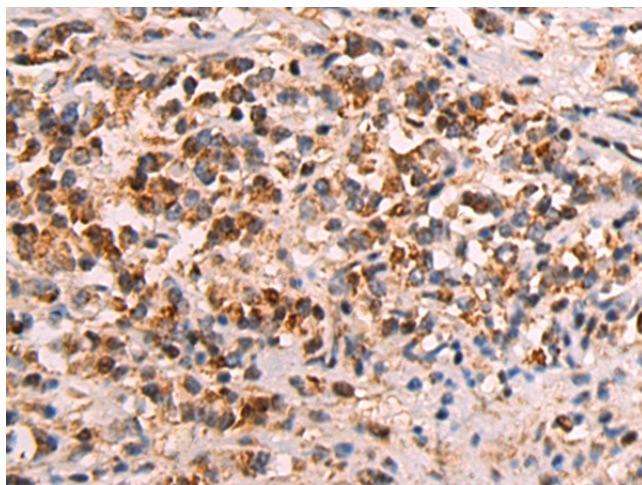
Background: The protein encoded by this gene is a member of the keratin family. The keratins are intermediate filament proteins responsible for the structural integrity of epithelial cells and are subdivided into cytokeratins and hair keratins. The type I cytokeratins consist of acidic proteins which are arranged in pairs of heterotypic keratin chains. The type I cytokeratin genes are clustered in a region of chromosome 17q12-q21.

Synonyms: CK23; HAIK1; K23

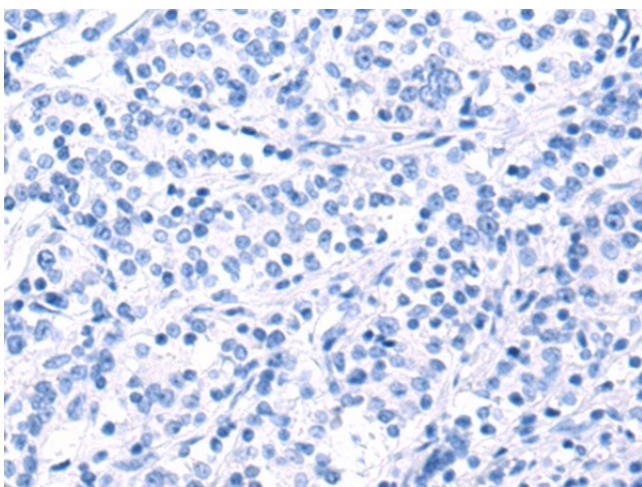
Product images:



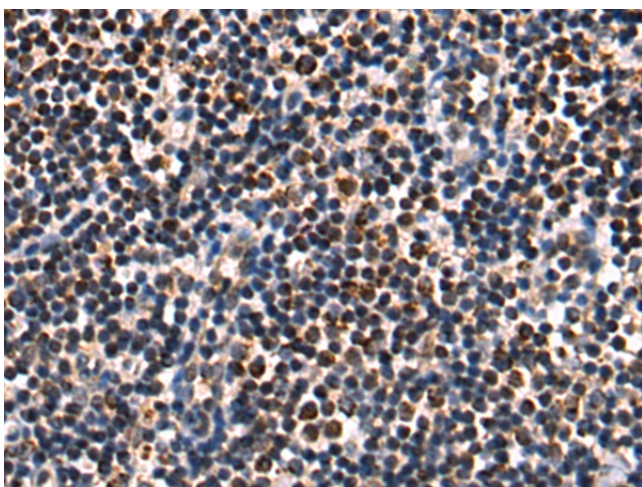
Gel: 8%SDS-PAGE
Lysate: 40 µg
Lane: HeLa cell lysate
Primary antibody: TA321839 (KRT23 Antibody) at dilution 1/600
Secondary antibody: Goat anti rabbit IgG at 1/5000 dilution
Exposure time: 20 seconds



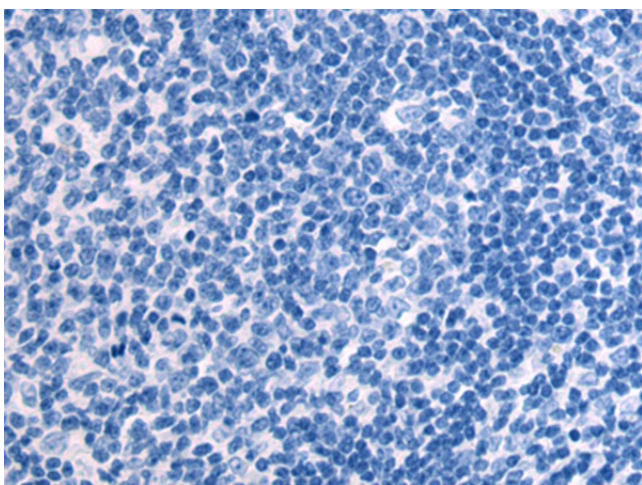
Immunohistochemistry of paraffin-embedded Human gastric cancer tissue using TA321839 (KRT23 Antibody) at dilution 1/85 (Original magnification: ×200)



Immunohistochemistry of paraffin-embedded Human gastric cancer tissue using TA321839 (KRT23 Antibody) at dilution 1/85, treated with fusion protein. (Original magnification: $\times 200$)



Immunohistochemistry of paraffin-embedded Human tonsil tissue using TA321839 (KRT23 Antibody) at dilution 1/85 (Original magnification: $\times 200$)



Immunohistochemistry of paraffin-embedded Human tonsil tissue using TA321839 (KRT23 Antibody) at dilution 1/85, treated with fusion protein. (Original magnification: $\times 200$)