

## Product datasheet for **TA321837**

### ANGPTL3 Rabbit Polyclonal Antibody

#### Product data:

Product Type:	Primary Antibodies
Applications:	IHC, WB
Recommended Dilution:	WB: 200-1000 WB positive control: A375 cell lysate IHC: 25-100 Positive control: Human liver cancer Predicted cell location: Cytoplasm
Reactivity:	Human
Host:	Rabbit
Isotype:	IgG
Clonality:	Polyclonal
Immunogen:	Fusion protein corresponding to C terminal 300 amino acids of Human Angiopoietin-related protein 3
Formulation:	PBS pH7.3, 0.05% NaN <sub>3</sub> , 50% glycerol
Concentration:	lot specific
Purification:	Antigen affinity purification
Conjugation:	Unconjugated
Storage:	Store at -20°C as received.
Stability:	Stable for 12 months from date of receipt.
Predicted Protein Size:	54 kDa
Gene Name:	angiopoietin like 3
Database Link:	<a href="#">NP_055310</a> <a href="#">Entrez Gene 27329 Human</a> <a href="#">Q9Y5C1</a>



[View online »](#)

**Background:**

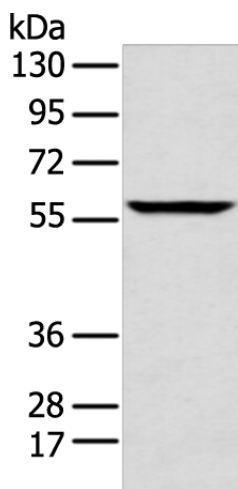
The protein encoded by this gene is a member of the angiotensin-like family of secreted factors. It is predominantly expressed in the liver; and has the characteristic structure of angiotensins; consisting of a signal peptide; N-terminal coiled-coil domain and the C-terminal fibrinogen (FBN)-like domain. The FBN-like domain in angiotensin-like 3 protein was shown to bind alpha-5/beta-3 integrins; and this binding induced endothelial cell adhesion and migration. This protein may also play a role in the regulation of angiogenesis.

**Synonyms:**

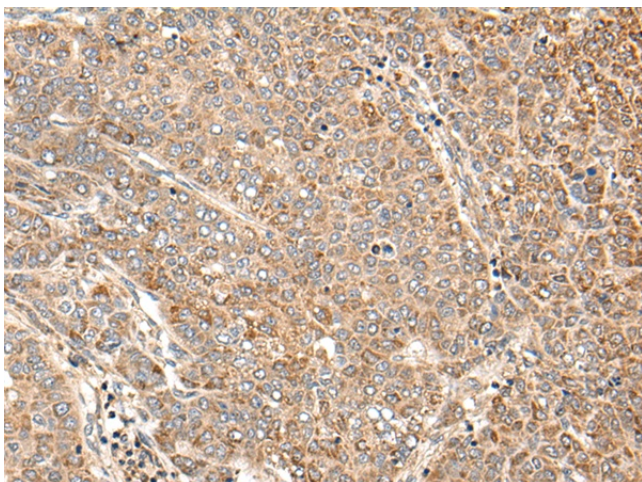
ANG-5; ANGPT5; ANL3; FHBL2

**Protein Families:**

Druggable Genome, Secreted Protein

**Product images:**

Gel: 8%SDS-PAGE  
Lysate: 40  $\mu$ g  
Lane: A375 cell lysate  
Primary antibody: TA321837 (ANGPTL3 Antibody) at dilution 1/200  
Secondary antibody: Goat anti rabbit IgG at 1/8000 dilution  
Exposure time: 10 seconds



Immunohistochemistry of paraffin-embedded Human liver cancer tissue using TA321837 (ANGPTL3 Antibody) at dilution 1/30. (Original magnification:  $\times$ 200)