

Product datasheet for **TA321835**

DR6 (TNFRSF21) Rabbit Polyclonal Antibody

Product data:

Product Type:	Primary Antibodies
Applications:	WB
Recommended Dilution:	WB: 500-2000 WB positive control: Human fetal brain tissue
Reactivity:	Human
Host:	Rabbit
Isotype:	IgG
Clonality:	Polyclonal
Immunogen:	Synthetic peptide corresponding to a region derived from 42-56 amino acids of Human tumor necrosis factor receptor superfamily, member 21
Formulation:	PBS pH7.3, 0.05% NaN ₃ , 50% glycerol
Concentration:	lot specific
Purification:	Antigen affinity purification
Conjugation:	Unconjugated
Storage:	Store at -20°C as received.
Stability:	Stable for 12 months from date of receipt.
Predicted Protein Size:	72 kDa
Gene Name:	tumor necrosis factor receptor superfamily member 21
Database Link:	NP_055267 Entrez Gene 27242 Human O75509
Background:	The protein encoded by this gene is a member of the TNF-receptor superfamily. This receptor has been shown to activate NF-kappaB and MAPK8/JNK; and induce cell apoptosis. Through its death domain; this receptor interacts with TRADD protein; which is known to serve as an adaptor that mediates signal transduction of TNF-receptors. Knockout studies in mice suggested that this gene plays a role in T-helper cell activation; and may be involved in inflammation and immune regulation.
Synonyms:	BM-018; CD358; DR6

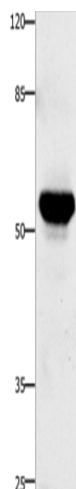


[View online »](#)

Protein Families: Druggable Genome, Transmembrane

Protein Pathways: Cytokine-cytokine receptor interaction

Product images:



Gel: 10%SDS-PAGE
Lysate: 30 μ g
Lane: Human fetal brain tissue
Primary antibody: TA321835 (TNFRSF21 Antibody)
at dilution 1/420
Secondary antibody: Goat anti rabbit IgG at
1/8000 dilution
Exposure time: 30 seconds