

Product datasheet for **TA321834**

Bcl2 Binding component 3 (BBC3) Rabbit Polyclonal Antibody

Product data:

Product Type:	Primary Antibodies
Applications:	IHC, WB
Recommended Dilution:	WB: 500-2000 WB positive control: K562 and 293T cell lysates IHC: 50-200 Positive control: Human liver cancer Predicted cell location: Cytoplasm
Reactivity:	Human
Host:	Rabbit
Isotype:	IgG
Clonality:	Polyclonal
Immunogen:	Synthetic peptide corresponding to a region derived from 180-193 amino acids of Human Bcl-2-binding component 3
Formulation:	PBS pH7.3, 0.05% NaN ₃ , 50% glycerol
Concentration:	lot specific
Purification:	Antigen affinity purification
Conjugation:	Unconjugated
Storage:	Store at -20°C as received.
Stability:	Stable for 12 months from date of receipt.
Predicted Protein Size:	21 kDa
Gene Name:	BCL2 binding component 3
Database Link:	NP_055232 Entrez Gene 27113 Human Q96PG8



[View online »](#)

Background:

This gene encodes a member of the BCL-2 family of proteins. This family member belongs to the BH3-only pro-apoptotic subclass. The protein cooperates with direct activator proteins to induce mitochondrial outer membrane permeabilization and apoptosis. It can bind to anti-apoptotic Bcl-2 family members to induce mitochondrial dysfunction and caspase activation. Because of its pro-apoptotic role; this gene is a potential drug target for cancer therapy and for tissue injury. Alternative splicing results in multiple transcript variants.

Synonyms:

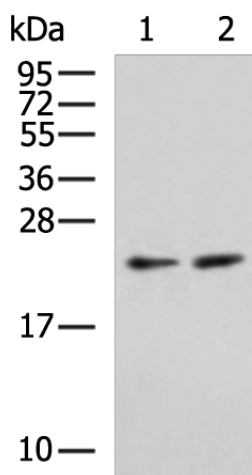
JFY-1; JFY1; PUMA

Protein Families:

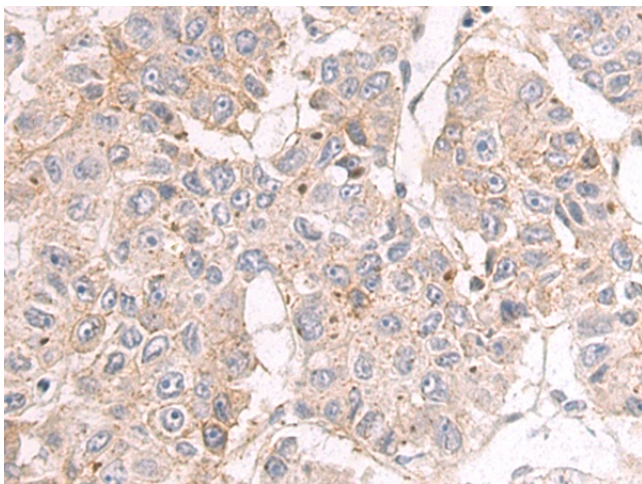
Druggable Genome

Protein Pathways:

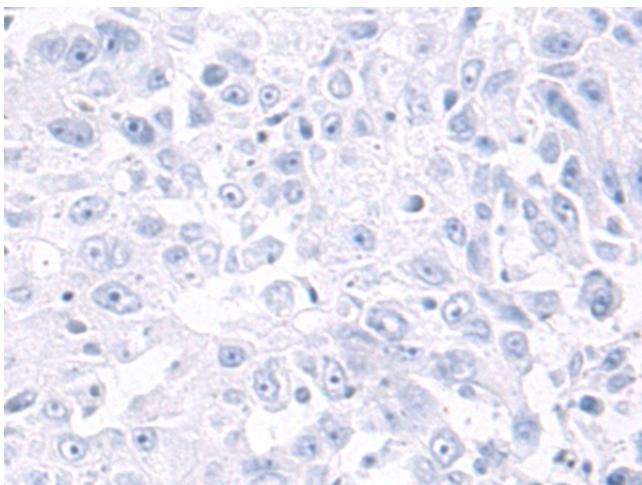
Huntington's disease, p53 signaling pathway

Product images:


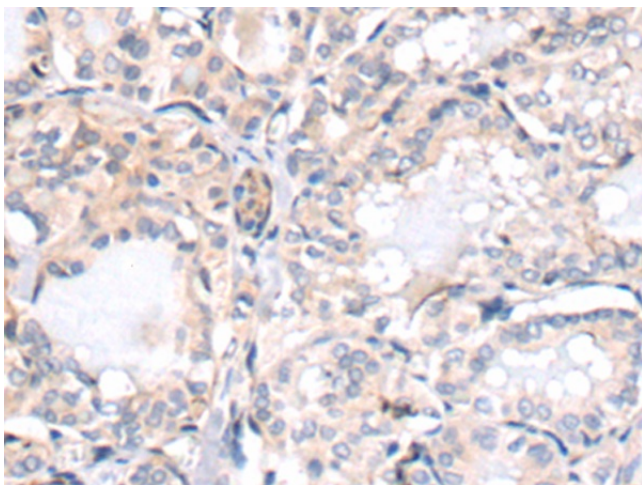
Gel: 12%SDS-PAGE
 Lysate: 40 µg
 Lane 1-2: K562 and 293T cell lysates
 Primary antibody: TA321834 (BBC3 Antibody) at dilution 1/800
 Secondary antibody: Goat anti rabbit IgG at 1/5000 dilution
 Exposure time: 1 minute



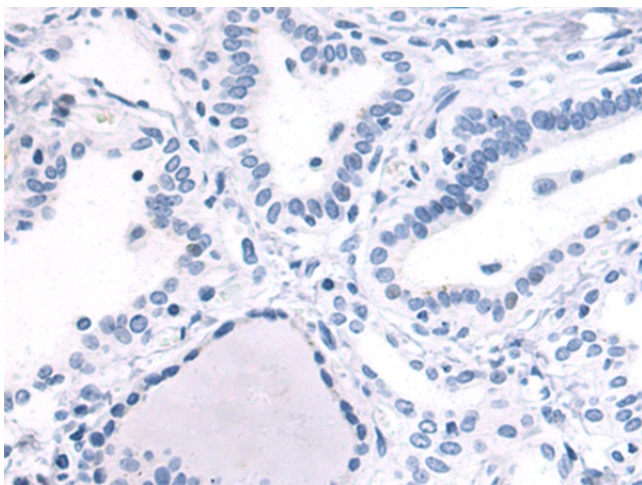
Immunohistochemistry of paraffin-embedded Human liver cancer tissue using TA321834 (BBC3 Antibody) at dilution 1/80 (Original magnification: ×200)



Immunohistochemistry of paraffin-embedded Human liver cancer tissue using TA321834 (BBC3 Antibody) at dilution 1/80, treated with synthetic peptide. (Original magnification: x200)



Immunohistochemistry of paraffin-embedded Human thyroid cancer tissue using TA321834 (BBC3 Antibody) at dilution 1/80 (Original magnification: x200)



Immunohistochemistry of paraffin-embedded Human thyroid cancer tissue using TA321834 (BBC3 Antibody) at dilution 1/80, treated with synthetic peptide. (Original magnification: x200)