

Product datasheet for **TA321833S**

LAMP3 Rabbit Polyclonal Antibody

Product data:

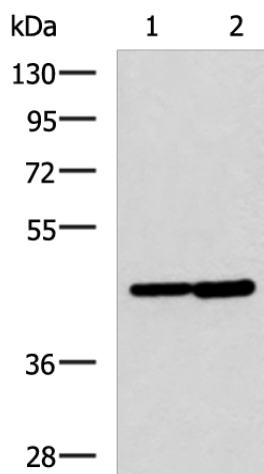
Product Type:	Primary Antibodies
Applications:	IHC, WB
Recommended Dilution:	WB: 500-2000 WB positive control: Hela and Jurkat cell lysates IHC: 25-50 Positive control: Human tonsil Predicted cell location: Cytoplasm
Reactivity:	Human
Host:	Rabbit
Isotype:	IgG
Clonality:	Polyclonal
Immunogen:	Synthetic peptide corresponding to a region derived from 51-66 amino acids of Human lysosomal-associated membrane protein 3
Formulation:	PBS pH7.3, 0.05% NaN ₃ , 50% glycerol
Purification:	Antigen affinity purification
Conjugation:	Unconjugated
Storage:	Store at -20°C as received.
Stability:	Stable for 12 months from date of receipt.
Predicted Protein Size:	44 kDa
Gene Name:	lysosomal associated membrane protein 3
Database Link:	NP_055213 Entrez Gene 27074 Human Q9UQV4
Background:	Dendritic cells (DCs) are the most potent antigen-presenting cells. Immature DCs efficiently capture antigens and differentiate into interdigitating dendritic cells (IDCs) in lymphoid tissues that induce primary T-cell responses
Synonyms:	CD208; DC-LAMP; DC LAMP; DCLAMP; LAMP; LAMP-3; TSC403
Protein Families:	Transmembrane



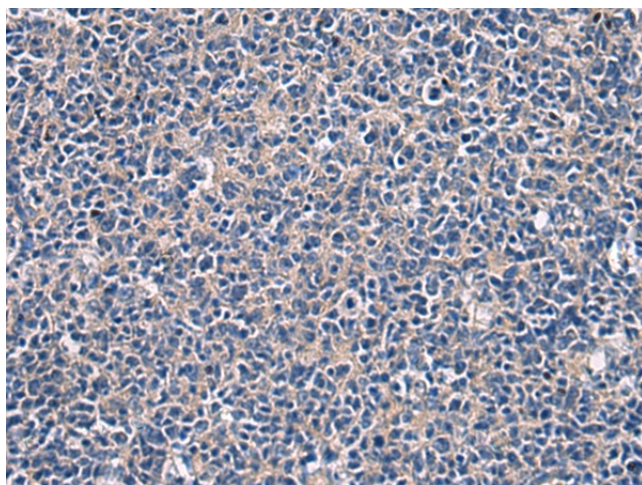
[View online »](#)

Protein Pathways: Lysosome

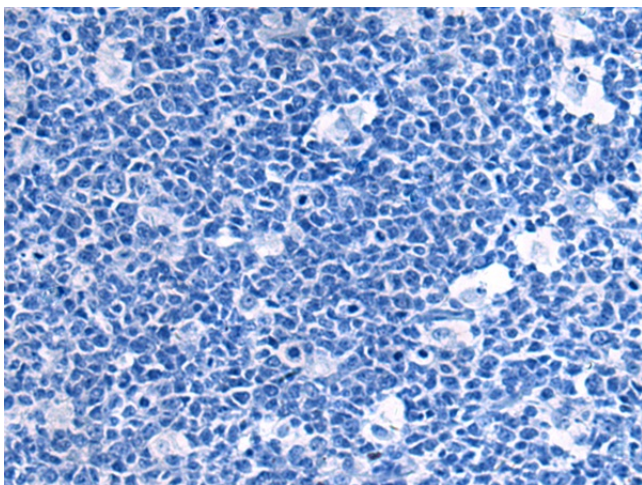
Product images:



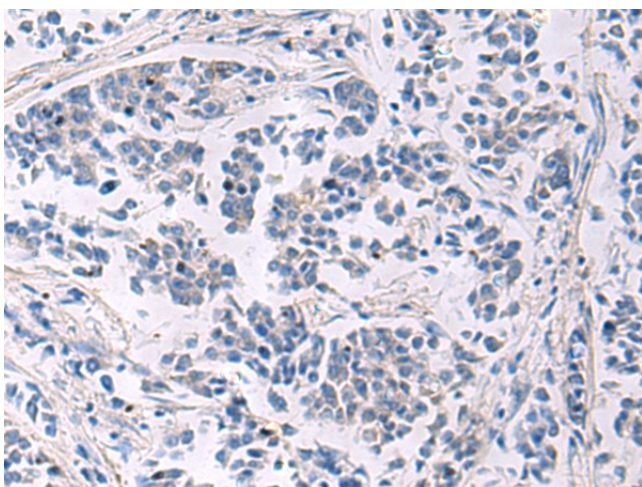
Gel: 8%SDS-PAGE
Lysate: 40 µg
Lane 1-2: HeLa and Jurkat cell lysates
Primary antibody: [TA321833] (LAMP3 Antibody)
at dilution 1/600
Secondary antibody: Goat anti rabbit IgG at
1/5000 dilution
Exposure time: 1 minute



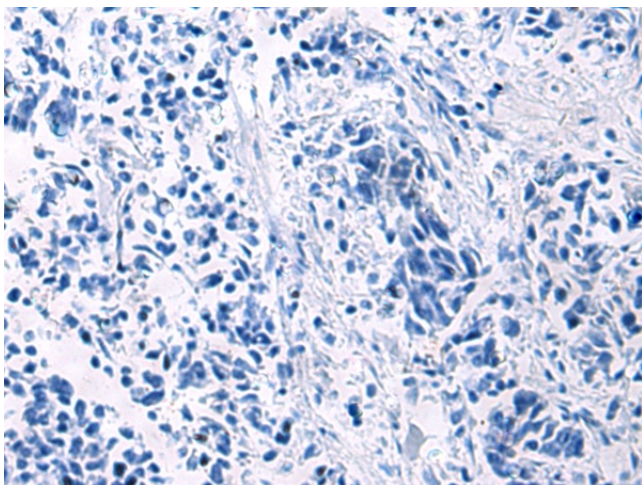
Immunohistochemistry of paraffin-embedded
Human tonsil tissue using [TA321833] (LAMP3
Antibody) at dilution 1/30 (Original magnification:
×200)



Immunohistochemistry of paraffin-embedded Human tonsil tissue using [TA321833] (LAMP3 Antibody) at dilution 1/30, treated with synthetic peptide. (Original magnification: $\times 200$)



Immunohistochemistry of paraffin-embedded Human breast cancer tissue using [TA321833] (LAMP3 Antibody) at dilution 1/30 (Original magnification: $\times 200$)



Immunohistochemistry of paraffin-embedded Human breast cancer tissue using [TA321833] (LAMP3 Antibody) at dilution 1/30, treated with synthetic peptide. (Original magnification: $\times 200$)