

## Product datasheet for **TA321832S**

### LAMP3 Rabbit Polyclonal Antibody

#### Product data:

Product Type:	Primary Antibodies
Applications:	IHC, WB
Recommended Dilution:	WB: 500-2000 WB positive control: Jurkat and Hela cell lysates IHC: 50-100 Positive control: Human brain Predicted cell location: Cytoplasm
Reactivity:	Human
Host:	Rabbit
Isotype:	IgG
Clonality:	Polyclonal
Immunogen:	Synthetic peptide corresponding to a region derived from 51-66 amino acids of Human lysosomal-associated membrane protein 3
Formulation:	PBS pH7.3, 0.05% NaN <sub>3</sub> , 50% glycerol
Purification:	Antigen affinity purification
Conjugation:	Unconjugated
Storage:	Store at -20°C as received.
Stability:	Stable for 12 months from date of receipt.
Predicted Protein Size:	44 kDa
Gene Name:	lysosomal associated membrane protein 3
Database Link:	<a href="#">NP_055213</a> <a href="#">Entrez Gene 27074 Human</a> <a href="#">Q9UQV4</a>
Background:	Lysosome-associated membrane glycoprotein 3 is a protein that in humans is encoded by the LAMP3 gene. LAMP3 has also recently been designated CD208. Dendritic cells (DCs) are the most potent antigen-presenting cells. Immature DCs efficiently capture antigens and differentiate into interdigitating dendritic cells (IDCs) in lymphoid tissues that induce primary T-cell responses. May play a role in dendritic cell function and in adaptive immunity.



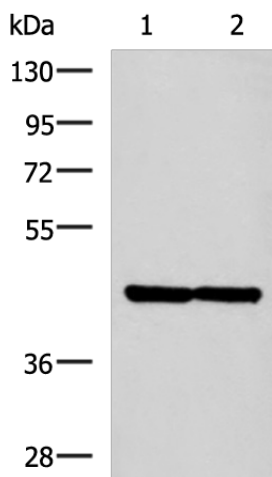
[View online »](#)

**Synonyms:** CD208; DC-LAMP; DC LAMP; DCLAMP; LAMP; LAMP-3; TSC403

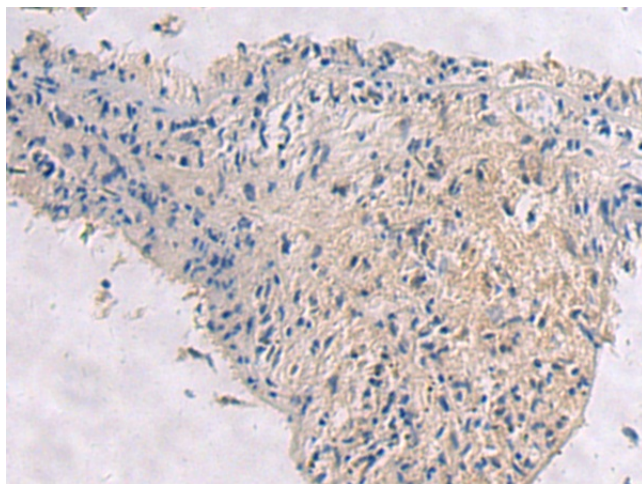
**Protein Families:** Transmembrane

**Protein Pathways:** Lysosome

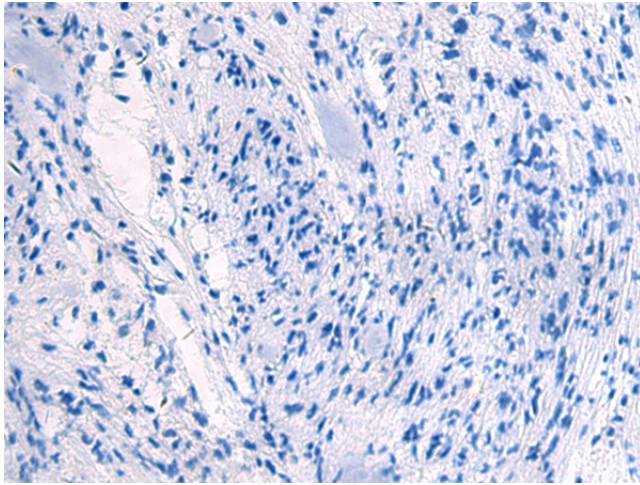
**Product images:**



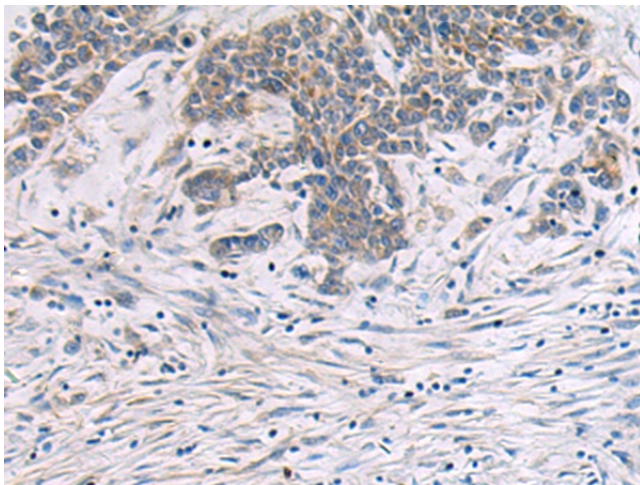
Gel: 8%SDS-PAGE  
 Lysate: 40 µg  
 Lane 1-2: Jurkat and HeLa cell lysates  
 Primary antibody: [TA321832] (LAMP3 Antibody) at dilution 1/800  
 Secondary antibody: Goat anti rabbit IgG at 1/5000 dilution  
 Exposure time: 1 minute



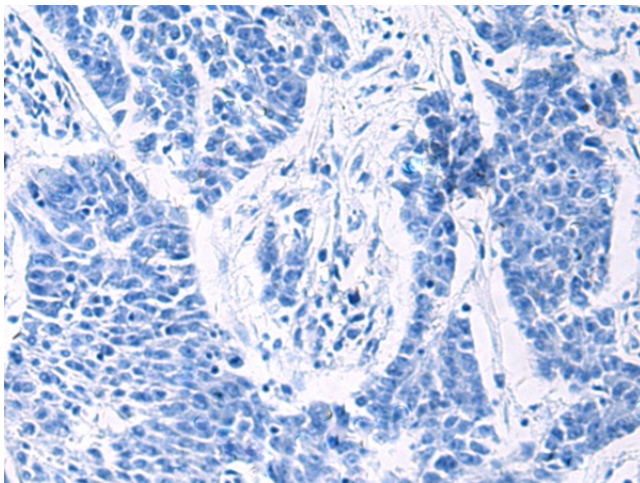
Immunohistochemistry of paraffin-embedded Human brain tissue using [TA321832] (LAMP3 Antibody) at dilution 1/40 (Original magnification: ×200)



Immunohistochemistry of paraffin-embedded Human brain tissue using [TA321832] (LAMP3 Antibody) at dilution 1/40, treated with synthetic peptide. (Original magnification:  $\times 200$ )



Immunohistochemistry of paraffin-embedded Human colorectal cancer tissue using [TA321832] (LAMP3 Antibody) at dilution 1/40 (Original magnification:  $\times 200$ )



Immunohistochemistry of paraffin-embedded Human colorectal cancer tissue using [TA321832] (LAMP3 Antibody) at dilution 1/40, treated with synthetic peptide. (Original magnification:  $\times 200$ )