

Product datasheet for **TA321829**

FOXP3 Rabbit Polyclonal Antibody

Product data:

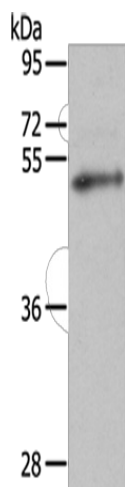
Product Type:	Primary Antibodies
Applications:	WB
Recommended Dilution:	WB: 500-2000 WB positive control: Mouse kidney tissue
Reactivity:	Human, Mouse
Host:	Rabbit
Isotype:	IgG
Clonality:	Polyclonal
Immunogen:	Synthetic peptide corresponding to a region derived from 410-424 amino acids of Human forkhead box P3
Formulation:	PBS pH7.3, 0.05% NaN ₃ , 50% glycerol
Concentration:	lot specific
Purification:	Antigen affinity purification
Conjugation:	Unconjugated
Storage:	Store at -20°C as received.
Stability:	Stable for 12 months from date of receipt.
Predicted Protein Size:	50 kDa
Gene Name:	forkhead box P3
Database Link:	NP_054728 Entrez Gene 20371 Mouse Entrez Gene 50943 Human Q9BZS1
Background:	The protein encoded by this gene is a member of the forkhead/winged-helix family of transcriptional regulators. Defects in this gene are the cause of immunodeficiency polyendocrinopathy; enteropathy; X-linked syndrome (IPEX); also known as X-linked autoimmunity-immunodeficiency syndrome. Alternatively spliced transcript variants encoding different isoforms have been identified.
Synonyms:	AIID; DIETER; IPEX; JM2; PIDX; XPID



[View online »](#)

Protein Families: Transcription Factors

Product images:



Gel: 8%SDS-PAGE
Lysate: 40 μ g
Lane: Mouse kidney tissue
Primary antibody: TA321829 (FOXP3 Antibody) at dilution 1/222
Secondary antibody: Goat anti rabbit IgG at 1/8000 dilution
Exposure time: 2 minutes