

## Product datasheet for **TA321824S**

### DNMT3L Rabbit Polyclonal Antibody

#### Product data:

Product Type:	Primary Antibodies
Applications:	IHC
Recommended Dilution:	IHC: 25-100 Positive control: Human liver cancer Predicted cell location: Cytoplasm
Reactivity:	Human
Host:	Rabbit
Isotype:	IgG
Clonality:	Polyclonal
Immunogen:	Fusion protein corresponding to C terminal 300 amino acids of human DNA (cytosine-5)-methyltransferase 3-like
Formulation:	PBS pH7.3, 0.05% NaN <sub>3</sub> , 50% glycerol
Purification:	Antigen affinity purification
Conjugation:	Unconjugated
Storage:	Store at -20°C as received.
Stability:	Stable for 12 months from date of receipt.
Gene Name:	DNA (cytosine-5-)-methyltransferase 3-like
Database Link:	<a href="#">NP_037501</a> <a href="#">Entrez Gene 29947 Human</a> <a href="#">Q9UJW3</a>



[View online »](#)

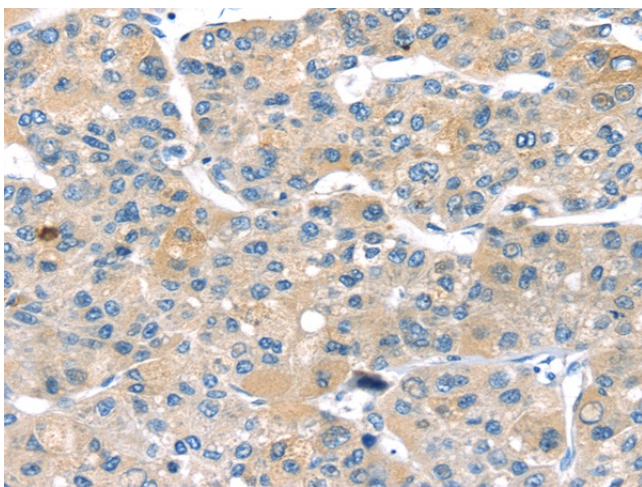
**Background:** CpG methylation is an epigenetic modification that is important for embryonic development; imprinting; and X-chromosome inactivation. Studies in mice have demonstrated that DNA methylation is required for mammalian development. This gene encodes a nuclear protein with similarity to DNA methyltransferases; but is not thought to function as a DNA methyltransferase as it does not contain the amino acid residues necessary for methyltransferase activity. However; it does stimulate de novo methylation by DNA cytosine methyltransferase 3 alpha and is thought to be required for the establishment of maternal genomic imprints. This protein also mediates transcriptional repression through interaction with histone deacetylase 1. Alternatively spliced transcript variants encoding different isoforms have been found for this gene.

**Synonyms:** MGC1090

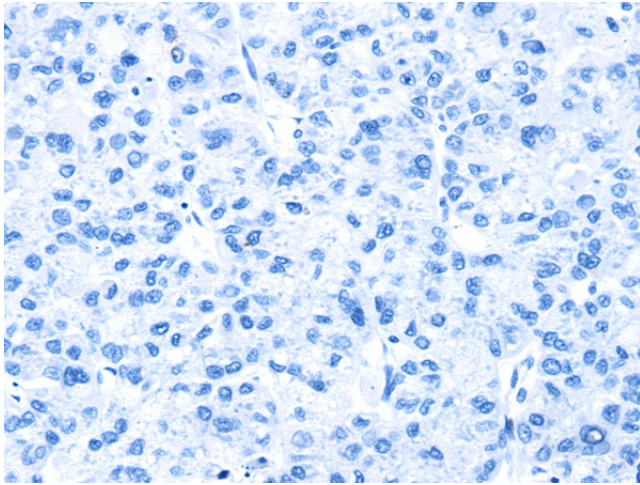
**Protein Families:** Druggable Genome, Transcription Factors

**Protein Pathways:** Cysteine and methionine metabolism, Metabolic pathways

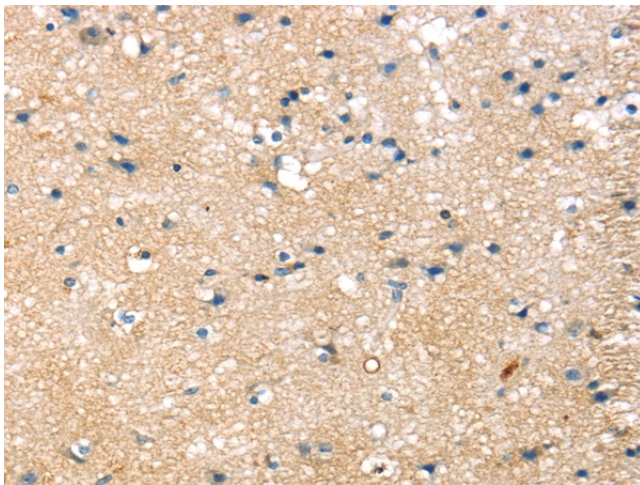
### Product images:



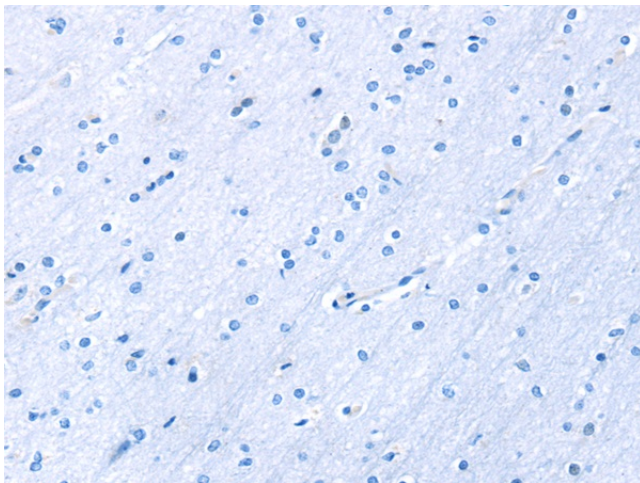
Immunohistochemistry of paraffin-embedded Human liver cancer tissue using [TA321824] (DNMT3L Antibody) at dilution 1/25 (Original magnification: x200)



Immunohistochemistry of paraffin-embedded Human liver cancer tissue using [TA321824] (DNMT3L Antibody) at dilution 1/25, treated with fusion protein. (Original magnification:  $\times 200$ )



Immunohistochemistry of paraffin-embedded Human brain tissue using [TA321824] (DNMT3L Antibody) at dilution 1/25 (Original magnification:  $\times 200$ )



Immunohistochemistry of paraffin-embedded Human brain tissue using [TA321824] (DNMT3L Antibody) at dilution 1/25, treated with fusion protein. (Original magnification:  $\times 200$ )