

Product datasheet for **TA321822**

Kallikrein 5 (KLK5) Rabbit Polyclonal Antibody

Product data:

Product Type:	Primary Antibodies
Applications:	IHC, WB
Recommended Dilution:	WB: 1000-5000 WB positive control: Mouse brain tissue IHC: 100-300 Positive control: Human ovarian cancer Predicted cell location: Cytoplasm
Reactivity:	Human, Mouse
Host:	Rabbit
Isotype:	IgG
Clonality:	Polyclonal
Immunogen:	Synthetic peptide corresponding to a region derived from 279-293 amino acids of Human kallikrein-related peptidase 5
Formulation:	PBS pH7.3, 0.05% NaN ₃ , 50% glycerol
Concentration:	lot specific
Purification:	Antigen affinity purification
Conjugation:	Unconjugated
Storage:	Store at -20°C as received.
Stability:	Stable for 12 months from date of receipt.
Predicted Protein Size:	32 kDa
Gene Name:	kallikrein related peptidase 5
Database Link:	NP_036559 Entrez Gene 68668 Mouse Entrez Gene 25818 Human Q9Y337



[View online »](#)

Background:

Kallikreins are a subgroup of serine proteases having diverse physiological functions. Growing evidence suggests that many kallikreins are implicated in carcinogenesis and some have potential as novel cancer and other disease biomarkers. This gene is one of the fifteen kallikrein subfamily members located in a cluster on chromosome 19. Its expression is up-regulated by estrogens and progestins. The encoded protein is secreted and may be involved in desquamation in the epidermis. Alternative splicing results in multiple transcript variants encoding the same protein.?

Synonyms:

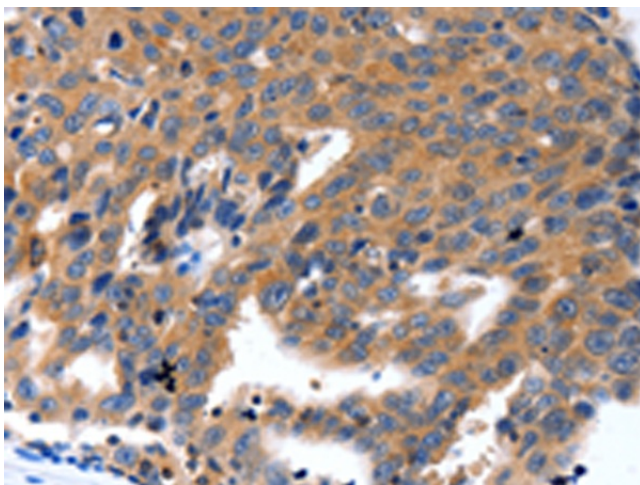
KLK-L2; KLKL2; SCTE

Protein Families:

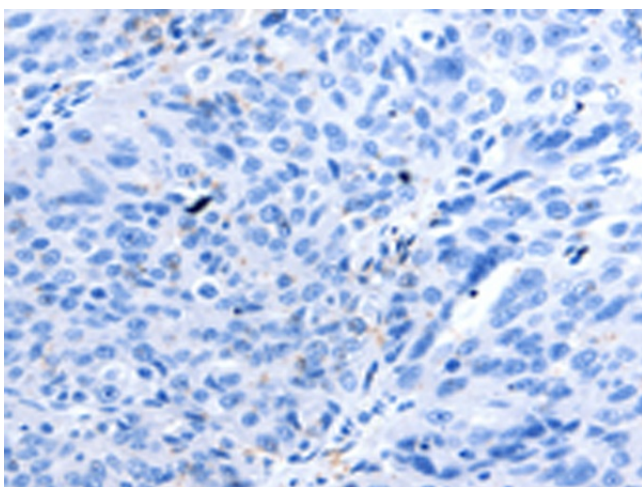
Druggable Genome, Protease, Secreted Protein, Transmembrane

Product images:

Gel: 10+12%SDS-PAGE
Lysate: 40 µg
Lane: Mouse brain tissue
Primary antibody: TA321822 (KLK5 Antibody) at dilution 1/1600
Secondary antibody: Goat anti rabbit IgG at 1/8000 dilution
Exposure time: 1 minute



Immunohistochemistry of paraffin-embedded Human ovarian cancer tissue using TA321822 (KLK5 Antibody) at dilution 1/100 (Original magnification: ×200)



Immunohistochemistry of paraffin-embedded Human ovarian cancer tissue using TA321822 (KLK5 Antibody) at dilution 1/100, treated with synthetic peptide. (Original magnification: $\times 200$)