

Product datasheet for **TA321821S**

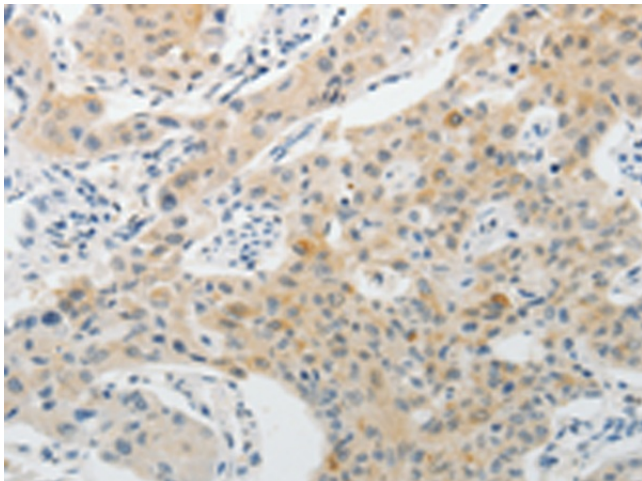
PADI4 Rabbit Polyclonal Antibody

Product data:

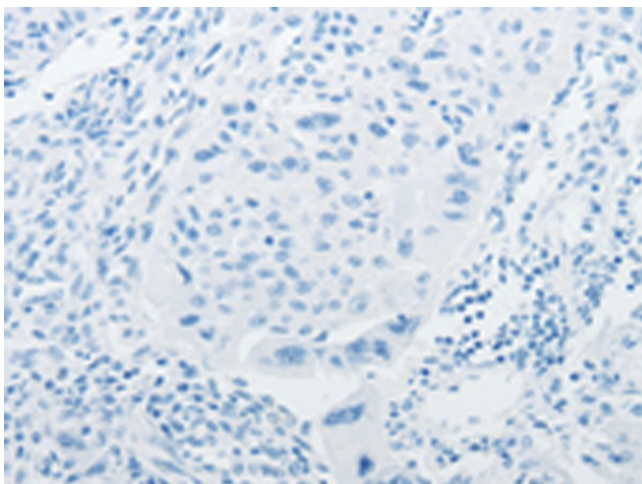
| | |
|------------------------------|---|
| Product Type: | Primary Antibodies |
| Applications: | IHC |
| Recommended Dilution: | IHC: 15-50 Positive control: Human lung cancer Predicted cell location: Cytoplasm |
| Reactivity: | Human |
| Host: | Rabbit |
| Isotype: | IgG |
| Clonality: | Polyclonal |
| Immunogen: | Fusion protein corresponding to C terminal 300 amino acids of human PADI4 |
| Formulation: | PBS pH7.3, 0.05% NaN ₃ , 50% glycerol |
| Purification: | Antigen affinity purification |
| Conjugation: | Unconjugated |
| Storage: | Store at -20°C as received. |
| Stability: | Stable for 12 months from date of receipt. |
| Gene Name: | peptidyl arginine deiminase 4 |
| Database Link: | NP_036519 Entrez Gene 23569 Human Q9UM07 |
| Background: | This gene is a member of a gene family which encodes enzymes responsible for the conversion of arginine residues to citrulline residues. This gene may play a role in granulocyte and macrophage development leading to inflammation and immune response. PADI4 plays a role in the epigenetics; the deimination of arginines on histones 3 and 4 can act antagonistically to arginine methylation. The protein may be found in oligomers and binds 5 calcium ions per subunit. It catalyses the reaction: Protein L-arginine + H ₂ O = protein L-citrulline + NH ₃ . |
| Synonyms: | PAD; PAD4; PADI5; PDI4; PDI5 |



[View online »](#)

Product images:

Immunohistochemistry of paraffin-embedded Human lung cancer tissue using [TA321821] (PADI4 Antibody) at dilution 1/15 (Original magnification: $\times 200$)



Immunohistochemistry of paraffin-embedded Human lung cancer tissue using [TA321821] (PADI4 Antibody) at dilution 1/15, treated with fusion protein. (Original magnification: $\times 200$)