

## Product datasheet for **TA321819S**

### Neurotensin Receptor 2 (NTSR2) Rabbit Polyclonal Antibody

#### Product data:

|                         |   |
|-------------------------|---|
| Product Type:           | Primary Antibodies  |
| Applications:           | WB  |
| Recommended Dilution:   | WB: 200-1000<br>WB positive control: Mouse brain tissue   |
| Reactivity:             | Human, Mouse  |
| Host:                   | Rabbit  |
| Isotype:                | IgG   |
| Clonality:              | Polyclonal  |
| Immunogen:              | Synthetic peptide peptide corresponding to a region derived from 396-410 amino acids of human neurotensin receptor 2  |
| Formulation:            | PBS pH7.3, 0.05% NaN <sub>3</sub> , 50% glycerol  |
| Purification:           | Antigen affinity purification   |
| Conjugation:            | Unconjugated  |
| Storage:                | Store at -20°C as received.   |
| Stability:              | Stable for 12 months from date of receipt.  |
| Predicted Protein Size: | 45 kDa  |
| Gene Name:              | neurotensin receptor 2  |
| Database Link:          | <a href="#">NP_036476</a><br><a href="#">Entrez Gene 18217 Mouse</a> <a href="#">Entrez Gene 23620 Human</a><br><a href="#">O95665</a>  |
| Background:             | The protein encoded by this gene belongs to the G protein-coupled receptor family that activate a phosphatidylinositol-calcium second messenger system. Binding and pharmacological studies demonstrate that this receptor binds neurotensin as well as several other ligands already described for neurotensin NT1 receptor. However; unlike NT1 receptor; this gene recognizes; with high affinity; levocabastine; a histamine H1 receptor antagonist previously shown to compete with neurotensin for low-affinity binding sites in brain. These activities suggest that this receptor may be of physiological importance and that a natural agonist for the receptor may exist. |



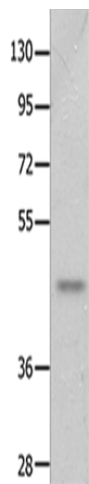
[View online »](#)

Synonyms: NTR2

Protein Families: Druggable Genome, GPCR, Transmembrane

Protein Pathways: Neuroactive ligand-receptor interaction

### Product images:



Gel: 10%SDS-PAGE

Lysate: 40 µg

Lane: Mouse brain tissue

Primary antibody: [TA321819] (NTSR2 Antibody)  
at dilution 1/250

Secondary antibody: Goat anti rabbit IgG at  
1/8000 dilution

Exposure time: 90 seconds