

Product datasheet for **TA321819**

Neurotensin Receptor 2 (NTSR2) Rabbit Polyclonal Antibody

Product data:

Product Type:	Primary Antibodies
Applications:	WB
Recommended Dilution:	WB: 200-1000 WB positive control: Mouse brain tissue
Reactivity:	Human, Mouse
Host:	Rabbit
Isotype:	IgG
Clonality:	Polyclonal
Immunogen:	Synthetic peptide peptide corresponding to a region derived from 396-410 amino acids of human neurotensin receptor 2
Formulation:	PBS pH7.3, 0.05% NaN ₃ , 50% glycerol
Concentration:	lot specific
Purification:	Antigen affinity purification
Conjugation:	Unconjugated
Storage:	Store at -20°C as received.
Stability:	Stable for 12 months from date of receipt.
Predicted Protein Size:	45 kDa
Gene Name:	neurotensin receptor 2
Database Link:	NP_036476 Entrez Gene 18217 Mouse Entrez Gene 23620 Human O95665



[View online »](#)

Background:

The protein encoded by this gene belongs to the G protein-coupled receptor family that activate a phosphatidylinositol-calcium second messenger system. Binding and pharmacological studies demonstrate that this receptor binds neurotensin as well as several other ligands already described for neurotensin NT1 receptor. However; unlike NT1 receptor; this gene recognizes; with high affinity; levocabastine; a histamine H1 receptor antagonist previously shown to compete with neurotensin for low-affinity binding sites in brain. These activities suggest that this receptor may be of physiological importance and that a natural agonist for the receptor may exist.

Synonyms:

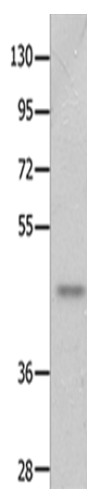
NTR2

Protein Families:

Druggable Genome, GPCR, Transmembrane

Protein Pathways:

Neuroactive ligand-receptor interaction

Product images:

Gel: 10%SDS-PAGE

Lysate: 40 µg

Lane: Mouse brain tissue

Primary antibody: TA321819 (NTSR2 Antibody) at dilution 1/250

Secondary antibody: Goat anti rabbit IgG at 1/8000 dilution

Exposure time: 90 seconds