

Product datasheet for **TA321812**

CLCA4 Rabbit Polyclonal Antibody

Product data:

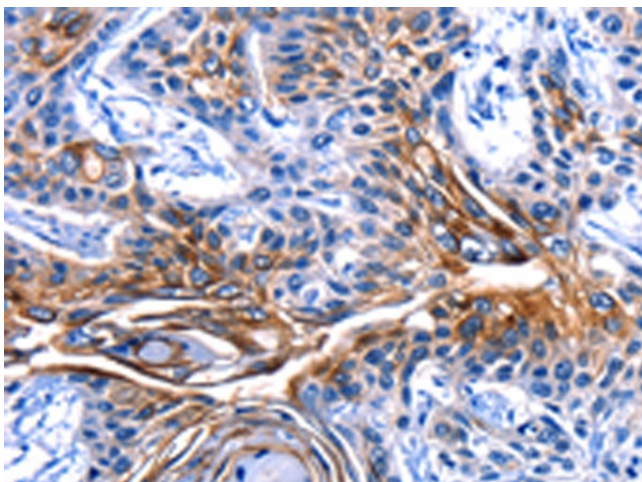
Product Type:	Primary Antibodies
Applications:	IHC
Recommended Dilution:	IHC: 10-50 Positive control: Human esophagus cancer Predicted cell location: Cell membrane
Reactivity:	Human
Host:	Rabbit
Isotype:	IgG
Clonality:	Polyclonal
Immunogen:	Fusion protein corresponding to a region derived from 306-476 amino acids of human Calcium-activated chloride channel regulator 4
Formulation:	PBS pH7.3, 0.05% NaN ₃ , 50% glycerol
Concentration:	lot specific
Purification:	Antigen affinity purification
Conjugation:	Unconjugated
Storage:	Store at -20°C as received.
Stability:	Stable for 12 months from date of receipt.
Gene Name:	chloride channel accessory 4
Database Link:	NP_036260 Entrez Gene 22802 Human Q14CN2
Background:	The protein encoded by this gene belongs to the calcium sensitive chloride conductance protein family. To date; all members of this gene family map to the same site on chromosome 1p31-p22 and share high degrees of homology in size; sequence and predicted structure; but differ significantly in their tissue distributions. Alternative splicing results in multiple transcript variants; only one of which is thought to be protein coding.
Synonyms:	CaCC; CaCC2
Protein Families:	Druggable Genome, Ion Channels: Other, Transmembrane



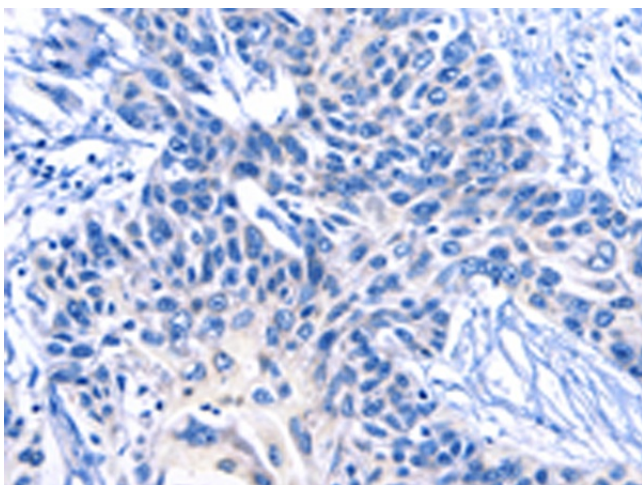
[View online »](#)

Protein Pathways: Olfactory transduction

Product images:



Immunohistochemistry of paraffin-embedded Human esophagus cancer tissue using TA321812 (CLCA4 Antibody) at dilution 1/15 (Original magnification: x200)



Immunohistochemistry of paraffin-embedded Human esophagus cancer tissue using TA321812 (CLCA4 Antibody) at dilution 1/15, treated with fusion protein. (Original magnification: x200)