

Product datasheet for **TA321811S**

CLCA4 Rabbit Polyclonal Antibody

Product data:

Product Type:	Primary Antibodies
Applications:	IHC, WB
Recommended Dilution:	WB: 1000-5000 WB positive control: Rat esophagus tissue lysate IHC: 50-200 Positive control: Human thyroid cancer Predicted cell location: Cytoplasm and Cell membrane
Reactivity:	Human, Rat
Host:	Rabbit
Isotype:	IgG
Clonality:	Polyclonal
Immunogen:	Fusion protein corresponding to a region derived from 306-476 amino acids of Human Calcium-activated chloride channel regulator 4
Formulation:	PBS pH7.3, 0.05% NaN ₃ , 50% glycerol
Purification:	Antigen affinity purification
Conjugation:	Unconjugated
Storage:	Store at -20°C as received.
Stability:	Stable for 12 months from date of receipt.
Predicted Protein Size:	101 kDa
Gene Name:	chloride channel accessory 4
Database Link:	NP_036260 Entrez Gene 362053 Rat Entrez Gene 22802 Human Q14CN2
Background:	The protein encoded by this gene belongs to the calcium sensitive chloride conductance protein family. To date; all members of this gene family map to the same site on chromosome 1p31-p22 and share high degrees of homology in size; sequence and predicted structure; but differ significantly in their tissue distributions. Alternative splicing results in multiple transcript variants; only one of which is thought to be protein coding.



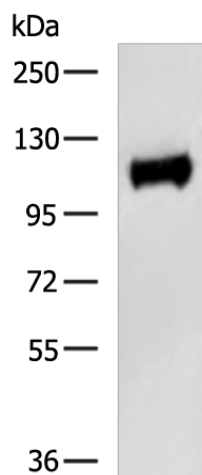
[View online »](#)

Synonyms: CaCC; CaCC2

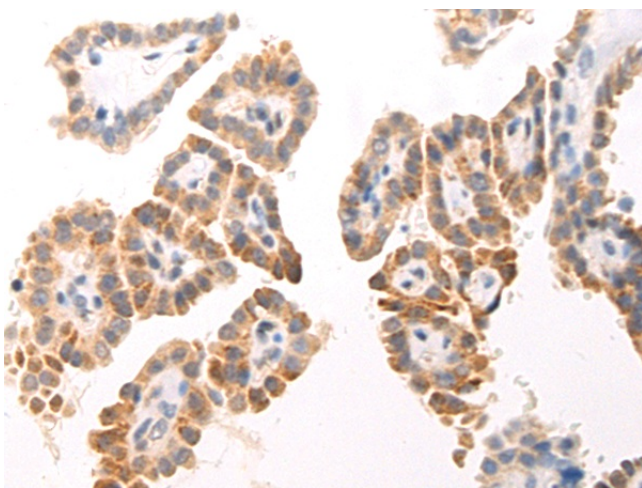
Protein Families: Druggable Genome, Ion Channels: Other, Transmembrane

Protein Pathways: Olfactory transduction

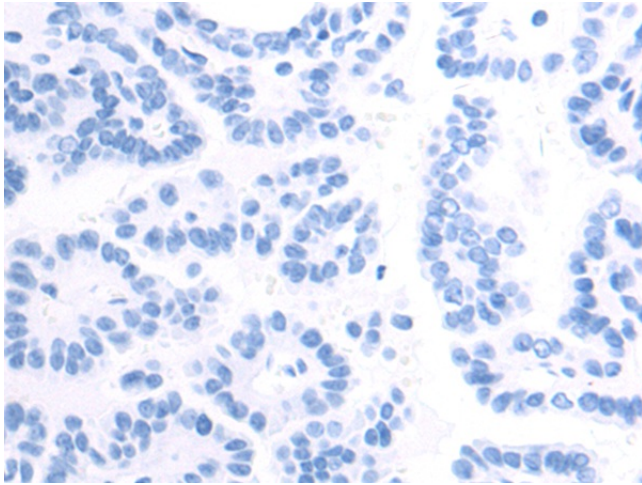
Product images:



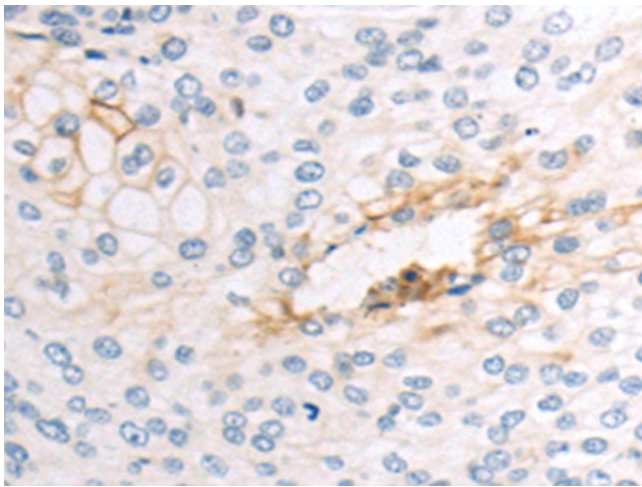
Gel: 6%SDS-PAGE
Lysate: 40 μ g
Lane: Rat esophagus tissue lysate
Primary antibody: [TA321811] (CLCA4 Antibody) at dilution 1/500
Secondary antibody: Goat anti rabbit IgG at 1/5000 dilution
Exposure time: 30 seconds
Primary antibody: [TA321811] (CLCA4 Antibody) at dilution 1/500
Secondary antibody: Goat anti rabbit IgG at 1/5000 dilution
Exposure time: 30 seconds



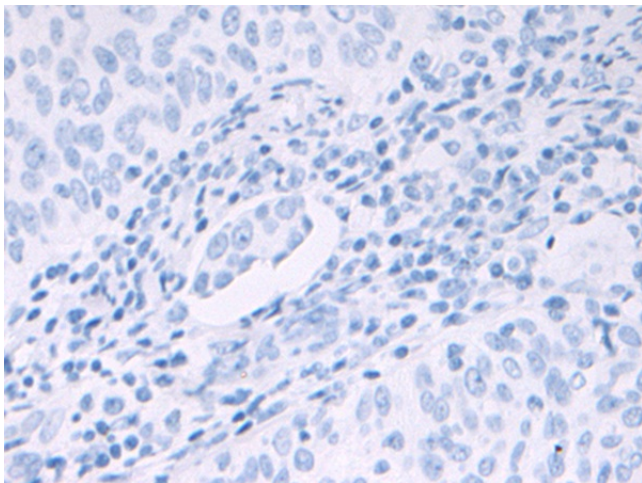
Immunohistochemistry of paraffin-embedded Human thyroid cancer tissue using [TA321811] (CLCA4 Antibody) at dilution 1/70 (Original magnification: \times 200)



Immunohistochemistry of paraffin-embedded Human thyroid cancer tissue using [TA321811] (CLCA4 Antibody) at dilution 1/70, treated with fusion protein. (Original magnification: $\times 200$)



Immunohistochemistry of paraffin-embedded Human cervical cancer tissue using [TA321811] (CLCA4 Antibody) at dilution 1/70 (Original magnification: $\times 200$)



Immunohistochemistry of paraffin-embedded Human cervical cancer tissue using [TA321811] (CLCA4 Antibody) at dilution 1/70, treated with fusion protein. (Original magnification: $\times 200$)