

Product datasheet for **TA321810S**

ANGPTL2 Rabbit Polyclonal Antibody

Product data:

Product Type:	Primary Antibodies
Applications:	IHC, WB
Recommended Dilution:	WB: 500-2000 WB positive control: Mouse brain tissue lysate IHC: 50-200 Positive control: Human breast cancer Predicted cell location: Cytoplasm
Reactivity:	Human, Mouse
Host:	Rabbit
Isotype:	IgG
Clonality:	Polyclonal
Immunogen:	Synthetic peptide corresponding to a region derived from 23-37 amino acids of human angiotensin-like 2
Formulation:	PBS pH7.3, 0.05% NaN ₃ , 50% glycerol
Purification:	Antigen affinity purification
Conjugation:	Unconjugated
Storage:	Store at -20°C as received.
Stability:	Stable for 12 months from date of receipt.
Predicted Protein Size:	57 kDa
Gene Name:	angiotensin like 2
Database Link:	NP_036230 Entrez Gene 26360 Mouse Entrez Gene 23452 Human Q9UKU9
Background:	Angiotensins are members of the vascular endothelial growth factor family and the only known growth factors largely specific for vascular endothelium. Angiotensin-1; angiotensin-2; and angiotensin-4 participate in the formation of blood vessels. ANGPTL2 protein is a secreted glycoprotein with homology to the angiotensins and may exert a function on endothelial cells through autocrine or paracrine action.

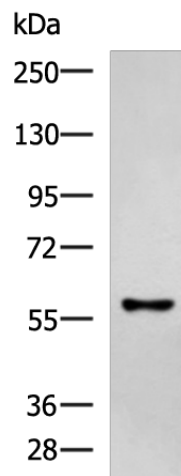


[View online »](#)

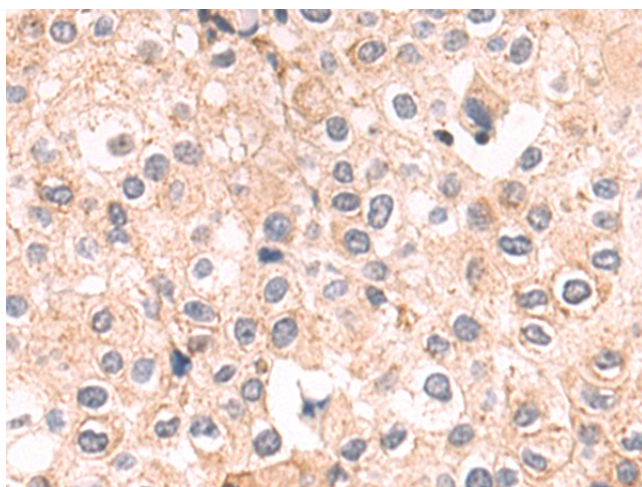
Synonyms: ARP2; HARP

Protein Families: Druggable Genome, ES Cell Differentiation/IPS, Secreted Protein

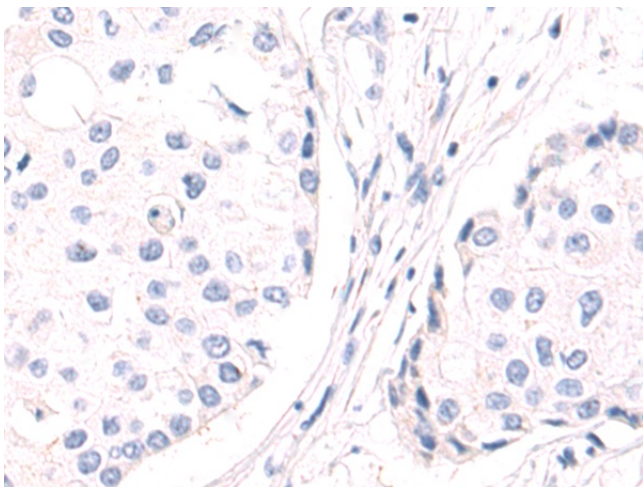
Product images:



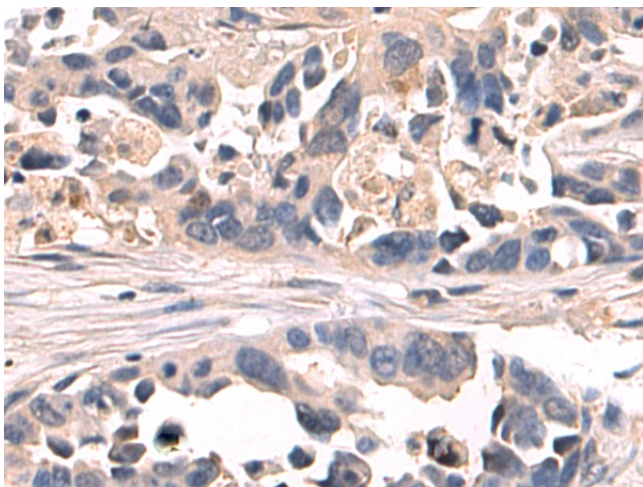
Gel: 8%SDS-PAGE
Lysate: 40 μ g
Lane: Mouse intestines tissue lysate
Primary antibody: [TA321810] (ANGPTL2 Antibody) at dilution 1/200
Secondary antibody: Goat anti rabbit IgG at 1/8000 dilution
Exposure time: 40 seconds



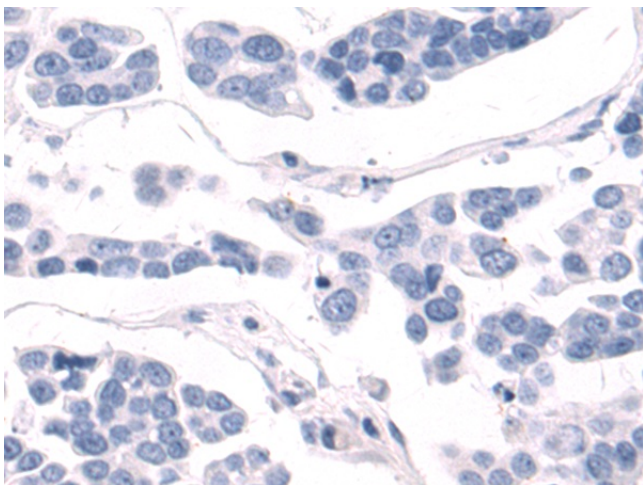
Immunohistochemistry of paraffin-embedded Human liver cancer tissue using [TA321810] (ANGPTL2 Antibody) at dilution 1/20 (Original magnification: \times 200)



Immunohistochemistry of paraffin-embedded Human liver cancer tissue using [TA321810] (ANGPTL2 Antibody) at dilution 1/20, treated with synthetic peptide. (Original magnification: ×200)



Immunohistochemistry of paraffin-embedded Human gastric cancer tissue using [TA321810] (ANGPTL2 Antibody) at dilution 1/20 (Original magnification: ×200)



Immunohistochemistry of paraffin-embedded Human gastric cancer tissue using [TA321810] (ANGPTL2 Antibody) at dilution 1/20, treated with synthetic peptide. (Original magnification: ×200)