

## Product datasheet for **TA321810**

### ANGPTL2 Rabbit Polyclonal Antibody

#### Product data:

Product Type:	Primary Antibodies
Applications:	IHC, WB
Recommended Dilution:	WB: 500-2000 WB positive control: Mouse brain tissue lysate IHC: 50-200 Positive control: Human breast cancer Predicted cell location: Cytoplasm
Reactivity:	Human, Mouse
Host:	Rabbit
Isotype:	IgG
Clonality:	Polyclonal
Immunogen:	Synthetic peptide corresponding to a region derived from 23-37 amino acids of human angiotensin-like 2
Formulation:	PBS pH7.3, 0.05% NaN <sub>3</sub> , 50% glycerol
Concentration:	lot specific
Purification:	Antigen affinity purification
Conjugation:	Unconjugated
Storage:	Store at -20°C as received.
Stability:	Stable for 12 months from date of receipt.
Predicted Protein Size:	57 kDa
Gene Name:	angiotensin like 2
Database Link:	<a href="#">NP_036230</a> <a href="#">Entrez Gene 26360 Mouse</a> <a href="#">Entrez Gene 23452 Human</a> <a href="#">Q9UKU9</a>



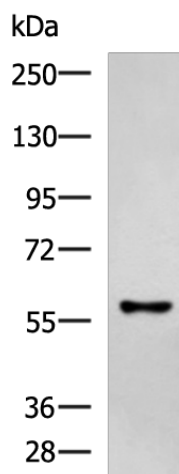
[View online »](#)

**Background:** Angiopoietins are members of the vascular endothelial growth factor family and the only known growth factors largely specific for vascular endothelium. Angiopoietin-1; angiopoietin-2; and angiopoietin-4 participate in the formation of blood vessels. ANGPTL2 protein is a secreted glycoprotein with homology to the angiopoietins and may exert a function on endothelial cells through autocrine or paracrine action.

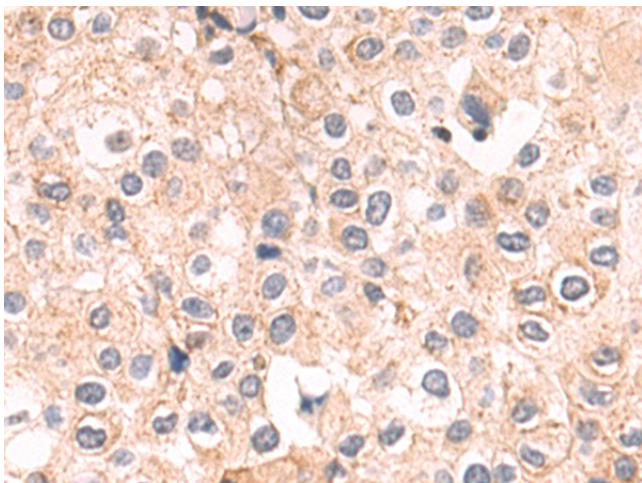
**Synonyms:** ARP2; HARP

**Protein Families:** Druggable Genome, ES Cell Differentiation/IPS, Secreted Protein

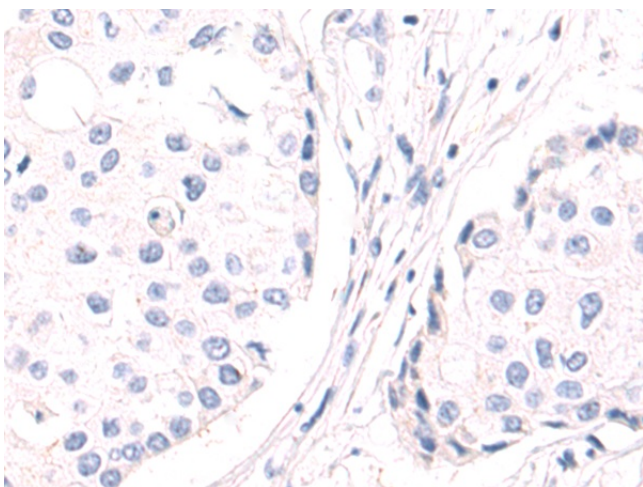
**Product images:**



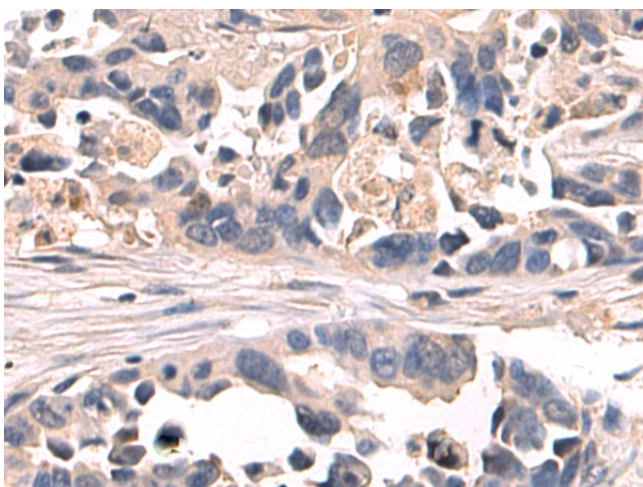
Gel: 8%SDS-PAGE  
Lysate: 40  $\mu$ g  
Lane: Mouse intestines tissue lysate  
Primary antibody: TA321810 (ANGPTL2 Antibody) at dilution 1/200  
Secondary antibody: Goat anti rabbit IgG at 1/8000 dilution  
Exposure time: 40 seconds



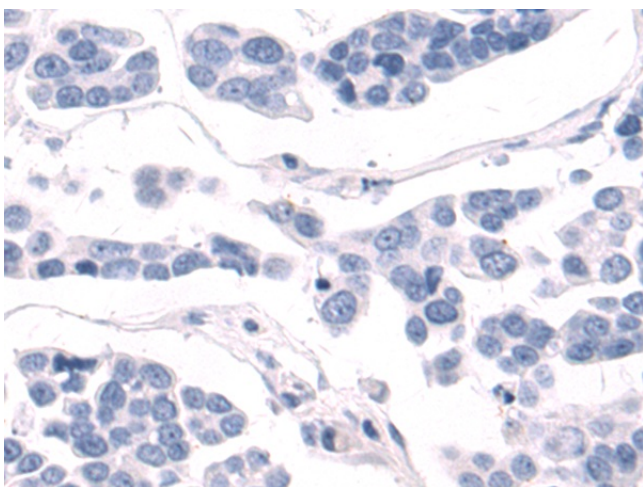
Immunohistochemistry of paraffin-embedded Human liver cancer tissue using TA321810 (ANGPTL2 Antibody) at dilution 1/20 (Original magnification:  $\times$ 200)



Immunohistochemistry of paraffin-embedded Human liver cancer tissue using TA321810 (ANGPTL2 Antibody) at dilution 1/20, treated with synthetic peptide. (Original magnification: x200)



Immunohistochemistry of paraffin-embedded Human gastric cancer tissue using TA321810 (ANGPTL2 Antibody) at dilution 1/20 (Original magnification: x200)



Immunohistochemistry of paraffin-embedded Human gastric cancer tissue using TA321810 (ANGPTL2 Antibody) at dilution 1/20, treated with synthetic peptide. (Original magnification: x200)