

## Product datasheet for **TA321805**

### ICOS Rabbit Polyclonal Antibody

#### Product data:

Product Type:	Primary Antibodies
Applications:	IHC
Recommended Dilution:	IHC: 150-300 Positive control: Human breast cancer Predicted cell location: Cytoplasm
Reactivity:	Human
Host:	Rabbit
Isotype:	IgG
Clonality:	Polyclonal
Immunogen:	Fusion protein corresponding to a region derived from 21-140 amino acids of human inducible T-cell co-stimulator
Formulation:	PBS pH7.3, 0.05% NaN <sub>3</sub> , 50% glycerol
Concentration:	lot specific
Purification:	Antigen affinity purification
Conjugation:	Unconjugated
Storage:	Store at -20°C as received.
Stability:	Stable for 12 months from date of receipt.
Gene Name:	inducible T-cell costimulator
Database Link:	<a href="#">NP_036224</a> <a href="#">Entrez Gene 29851 Human</a> <a href="#">Q9Y6W8</a>



[View online »](#)

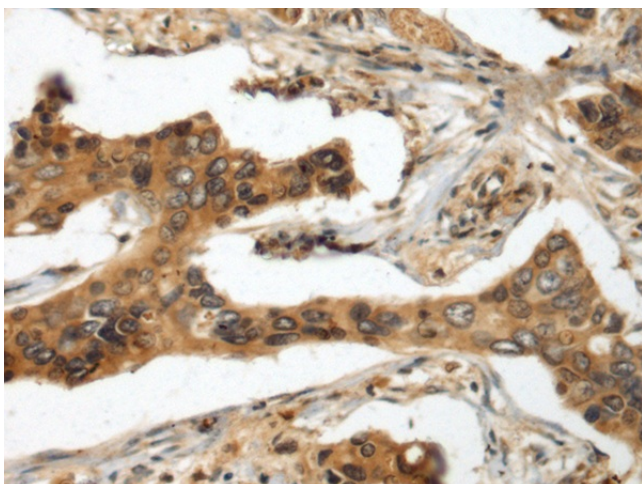
**Background:** The protein encoded by this gene belongs to the CD28 and CTLA-4 cell-surface receptor family. It forms homodimers and plays an important role in cell-cell signaling; immune responses; and regulation of cell proliferation. Enhances all basic T-cell responses to a foreign antigen; namely proliferation; secretion of lymphokines; up-regulation of molecules that mediate cell-cell interaction; and effective help for antibody secretion by B-cells. Essential both for efficient interaction between T and B-cells and for normal antibody responses to T-cell dependent antigens. Does not up-regulate the production of interleukin-2; but superinduces the synthesis of interleukin-10. Prevents the apoptosis of pre-activated T-cells. Plays a critical role in CD40-mediated class switching of immunoglobulin isotypes.

**Synonyms:** AILIM; CD278; CVID1

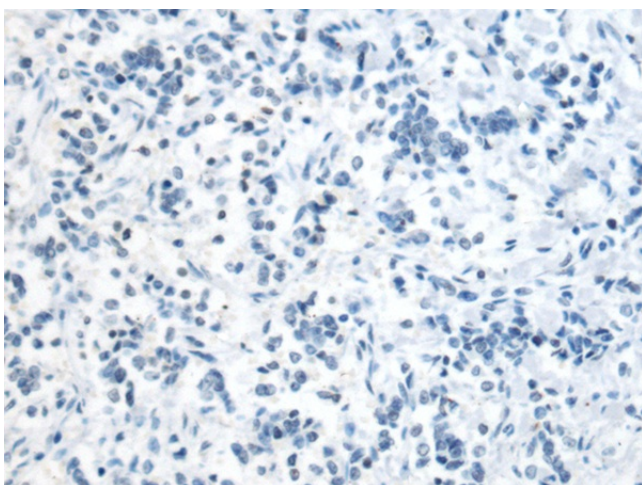
**Protein Families:** Secreted Protein, Transmembrane

**Protein Pathways:** Cell adhesion molecules (CAMs), Primary immunodeficiency, T cell receptor signaling pathway

### Product images:



Immunohistochemistry of paraffin-embedded Human breast cancer tissue using TA321805 (ICOS Antibody) at dilution 1/140 (Original magnification:  $\times 200$ )



Immunohistochemistry of paraffin-embedded Human breast cancer tissue using TA321805 (ICOS Antibody) at dilution 1/140, treated with fusion protein. (Original magnification:  $\times 200$ )