

## Product datasheet for **TA321803**

### Annexin A10 (ANXA10) Rabbit Polyclonal Antibody

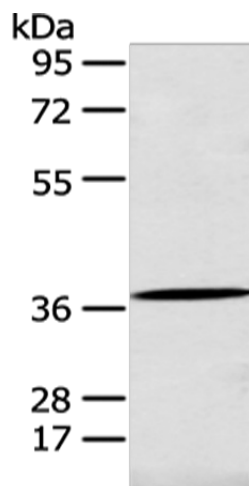
#### Product data:

|                       |  |
|-----------------------|--|
| Product Type:         | Primary Antibodies   |
| Applications:         | IHC, WB  |
| Recommended Dilution: | WB: 200-1000<br>WB positive control: A431 cell<br>IHC: 50-200<br>Positive control: Human breast cancer<br>Predicted cell location: Cytoplasm or Nucleus  |
| Reactivity:           | Human, Mouse   |
| Host:                 | Rabbit   |
| Isotype:              | IgG  |
| Clonality:            | Polyclonal   |
| Immunogen:            | Full length fusion protein   |
| Formulation:          | PBS pH7.3, 0.05% NaN <sub>3</sub> , 50% glycerol   |
| Concentration:        | lot specific   |
| Purification:         | Antigen affinity purification  |
| Conjugation:          | Unconjugated   |
| Storage:              | Store at -20°C as received.  |
| Stability:            | Stable for 12 months from date of receipt.   |
| Gene Name:            | annexin A10  |
| Database Link:        | <a href="#">NP_009124</a><br><a href="#">Entrez Gene 26359 Mouse</a> <a href="#">Entrez Gene 11199 Human</a><br><a href="#">Q9UJ72</a>   |
| Background:           | This gene encodes a member of the annexin family. Members of this calcium-dependent phospholipid-binding protein family play a role in the regulation of cellular growth and in signal transduction pathways. The function of this gene has not yet been determined. |
| Synonyms:             | ANX14  |

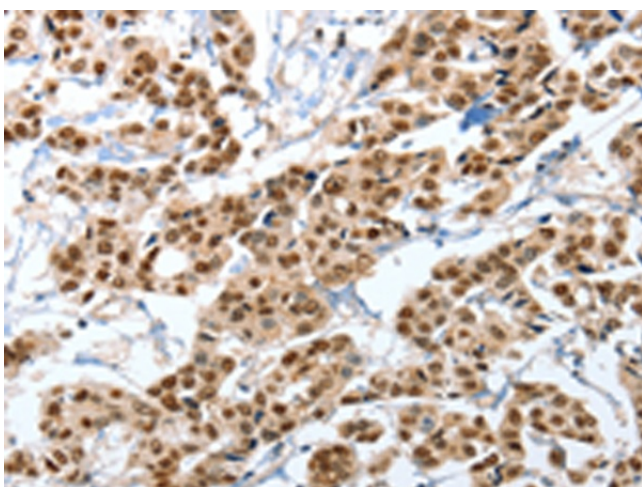


[View online »](#)

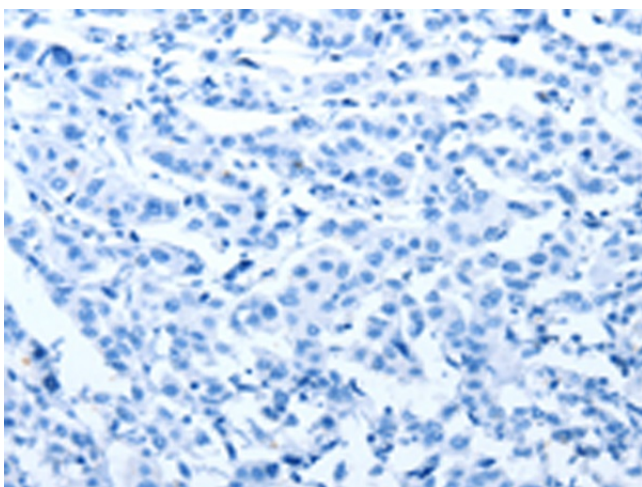
## Product images:



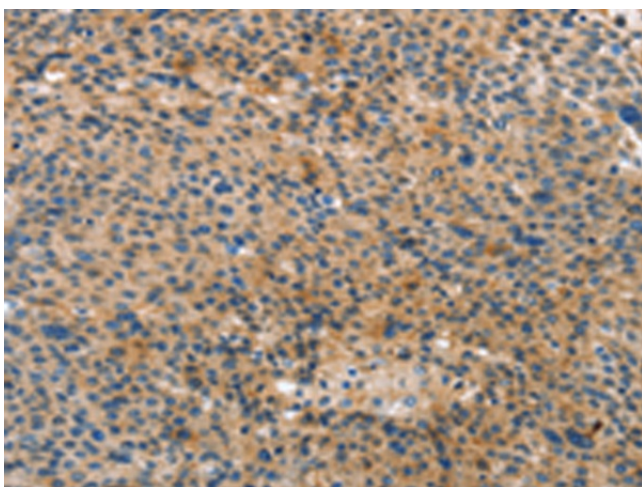
Gel: 8%SDS-PAGE  
Lysate: 40  $\mu$ g  
Lane: A431 cell  
Primary antibody: TA321803 (ANXA10 Antibody)  
at dilution 1/200  
Secondary antibody: Goat anti rabbit IgG at  
1/8000 dilution  
Exposure time: 5 seconds



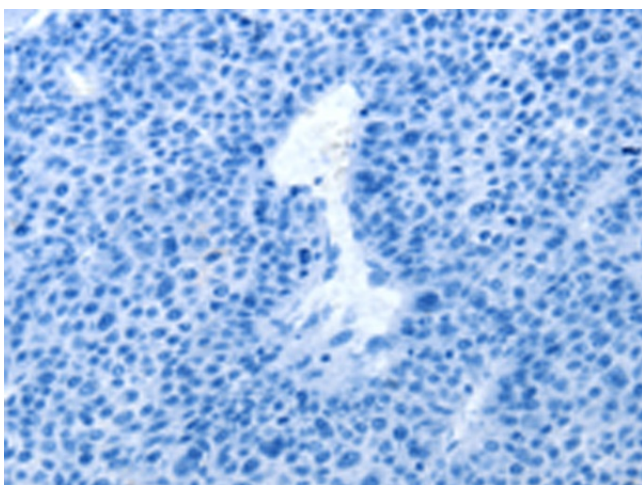
Immunohistochemistry of paraffin-embedded  
Human breast cancer tissue using TA321803  
(ANXA10 Antibody) at dilution 1/35 (Original  
magnification:  $\times$ 200)



Immunohistochemistry of paraffin-embedded Human breast cancer tissue using TA321803 (ANXA10 Antibody) at dilution 1/35, treated with fusion protein. (Original magnification: ×200)



Immunohistochemistry of paraffin-embedded Human liver cancer tissue using TA321803 (ANXA10 Antibody) at dilution 1/35 (Original magnification: ×200)



Immunohistochemistry of paraffin-embedded Human liver cancer tissue using TA321803 (ANXA10 Antibody) at dilution 1/35, treated with fusion protein. (Original magnification: ×200)