

## Product datasheet for **TA321802S**

### RASSF1 Rabbit Polyclonal Antibody

#### Product data:

Product Type:	Primary Antibodies
Applications:	IHC, WB
Recommended Dilution:	WB: 200-1000 WB positive control: 293T cell lysate IHC: 25-50 Positive control: Human tonsil Predicted cell location: Cytoplasm
Reactivity:	Human, Mouse
Host:	Rabbit
Isotype:	IgG
Clonality:	Polyclonal
Immunogen:	Synthetic peptide corresponding to a region derived from 120-133 amino acids of human Ras association (RalGDS/AF-6) domain family member 1
Formulation:	PBS pH7.3, 0.05% NaN <sub>3</sub> , 50% glycerol
Purification:	Antigen affinity purification
Conjugation:	Unconjugated
Storage:	Store at -20°C as received.
Stability:	Stable for 12 months from date of receipt.
Predicted Protein Size:	39 kDa
Gene Name:	Ras association domain family member 1
Database Link:	<a href="#">NP_009113</a> <a href="#">Entrez Gene 56289 Mouse</a> <a href="#">Entrez Gene 11186 Human</a> <a href="#">Q9NS23</a>



[View online »](#)

**Background:**

This gene encodes a protein similar to the RAS effector proteins. Loss or altered expression of this gene has been associated with the pathogenesis of a variety of cancers; which suggests the tumor suppressor function of this gene. The inactivation of this gene was found to be correlated with the hypermethylation of its CpG-island promoter region. The encoded protein was found to interact with DNA repair protein XPA. The protein was also shown to inhibit the accumulation of cyclin D1; and thus induce cell cycle arrest. Several alternatively spliced transcript variants of this gene encoding distinct isoforms have been reported.

**Synonyms:**

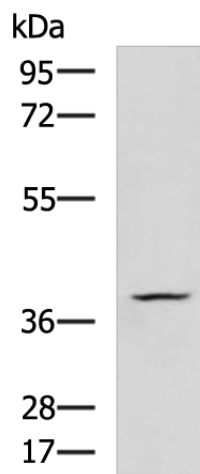
123F2; NORE2A; RASSF1A; RDA32; REH3P21

**Protein Families:**

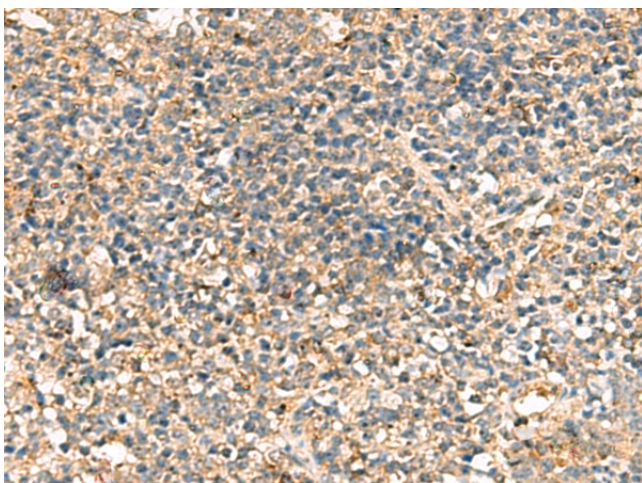
Druggable Genome

**Protein Pathways:**

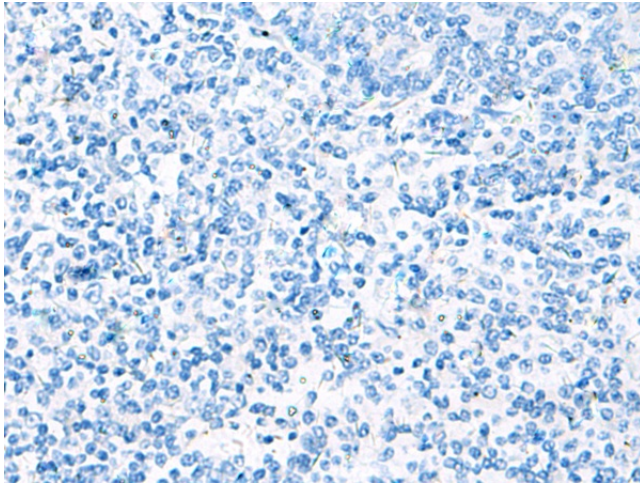
Bladder cancer, Non-small cell lung cancer, Pathways in cancer

**Product images:**

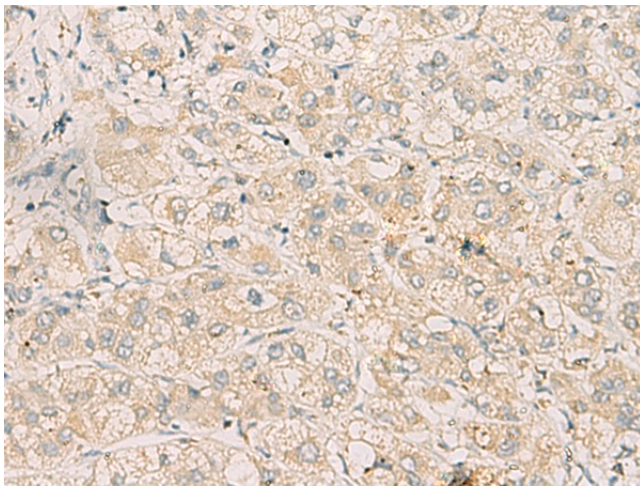
Gel: 8%SDS-PAGE  
Lysate: 40 µg  
Lane: 293T cell lysate  
Primary antibody: [TA321802] (RASSF1 Antibody) at dilution 1/250  
Secondary antibody: Goat anti rabbit IgG at 1/5000 dilution  
Exposure time: 2 minutes



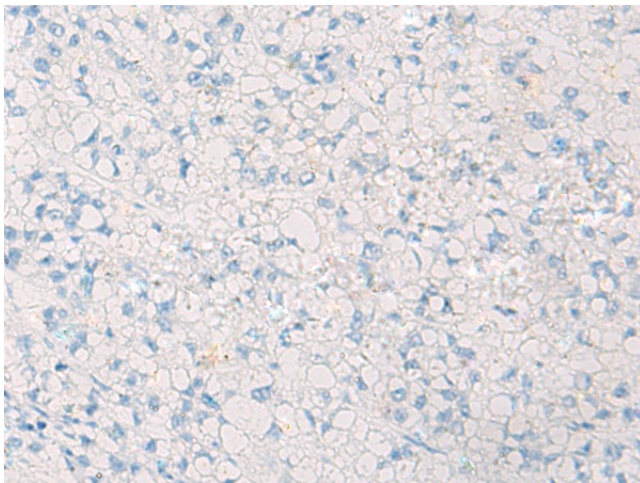
Immunohistochemistry of paraffin-embedded Human tonsil tissue using [TA321802] (RASSF1 Antibody) at dilution 1/20 (Original magnification: ×200)



Immunohistochemistry of paraffin-embedded Human tonsil tissue using [TA321802] (RASSF1 Antibody) at dilution 1/20, treated with synthetic peptide. (Original magnification:  $\times 200$ )



Immunohistochemistry of paraffin-embedded Human liver cancer tissue using [TA321802] (RASSF1 Antibody) at dilution 1/20 (Original magnification:  $\times 200$ )



Immunohistochemistry of paraffin-embedded Human liver cancer tissue using [TA321802] (RASSF1 Antibody) at dilution 1/20, treated with synthetic peptide. (Original magnification:  $\times 200$ )